

LEA Name : Penn Manor SD
Address : PO Box 1001
Millersville , PA 17551

County : Lancaster
AUN Number : 113365203
LEA Type : SD

Annual Financial Report Accuracy Certification Statement

For Fiscal Year Ending
6/30/2025

Pennsylvania Department of Education
&
Office of Comptroller Operations

PDE-2056: Intermediate Unit
PDE-2057: School District, AVTS/CTC, Charter School,
and Special Program Jointure


CERTIFICATION: By signing this page I agree that the electronic data submitted is a complete and accurate statement of the financial operations and status of the local education agency for the fiscal year. It has been prepared in accordance with generally accepted accounting principles and established Commonwealth of PA reporting guidelines.



Chief School Administrator Signature

11/25/2025

Date



Board Secretary Signature

11/25/2025

Date

Daniel L. Forry

Contact Person

dan.forry@pennmanor.net

Contact Person E-mail Address

(717)872-9500 Ext :2237

Contact Person Telephone Number

Contact Person Fax Number

Audit Certification
Annual Financial Report:
For Fiscal Year Ending **6/30/2025**
(Pursuant to PA School Code Section 218(b))

LEA Name : Penn Manor SD
AUN Number : 113365203
County : Lancaster

Audit Certification Due: 12/31/2025

This certification is applicable to the Annual Financial Report data submitted through the Consolidated Financial Reporting System (CFRS).

CERTIFICATION: By signing this page I agree that the financial statements of the school have been properly audited as noted above pursuant to Article XXIV, and in the auditor's professional opinion, the Annual Financial Report (PDE-2057) submitted through CFRS is materially consistent with the audited financial statements.

Chief School Administrator

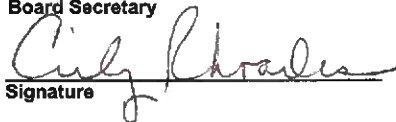


Signature

12/9/25

Date

Board Secretary



Signature

12/9/25

Date

Daniel L Forry

Contact Person

dan.forry@pennmanor.net

Contact Person E-mail Address

(717)872-9500 Ext :2237

Contact Person Telephone Number

Contact Person Fax Number

Penn Manor School District Executive Leadership

November 2025

Board of School Directors

Philip Gale
Superintendent

Cindy Rhoades
Executive Secretary

Krista Cox
Assistant Superintendent
Curriculum & Instruction

Jerry Egan
Assistant Superintendent
Personnel & Operations

Dee Galen
Director of Student
Support Services

Dan Forry
Chief Financial Officer

Charlie Reisinger
Chief Information Officer

**Curriculum &
Instruction**

Assessment and Data

**Department
Coordinators/
Supervisors**

**Professional
development**

ESL & AST

Principals

**Professional
Employees**

**Student Building
Assignments**

Federal Programs

Health Services

**Special
Education**

**Social
Workers**

Gifted

**School
Psychology**

Counseling

**Buildings, Grounds,
& Construction**

**Business
Services**

Food Services

HR, Payroll, Benefits

Transportation

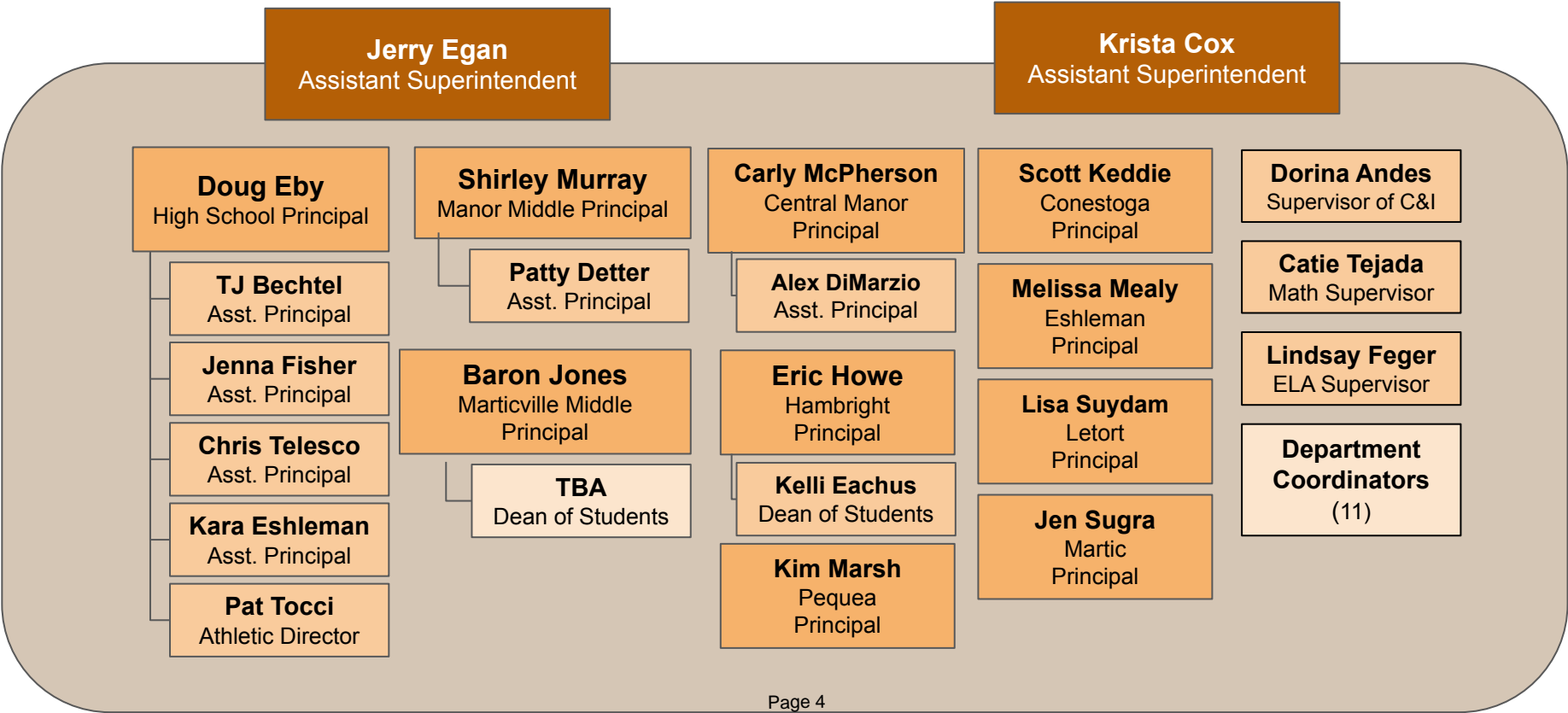
**Applications, AV,
Communications**

**Data & Info Services,
PIMS, Registration**

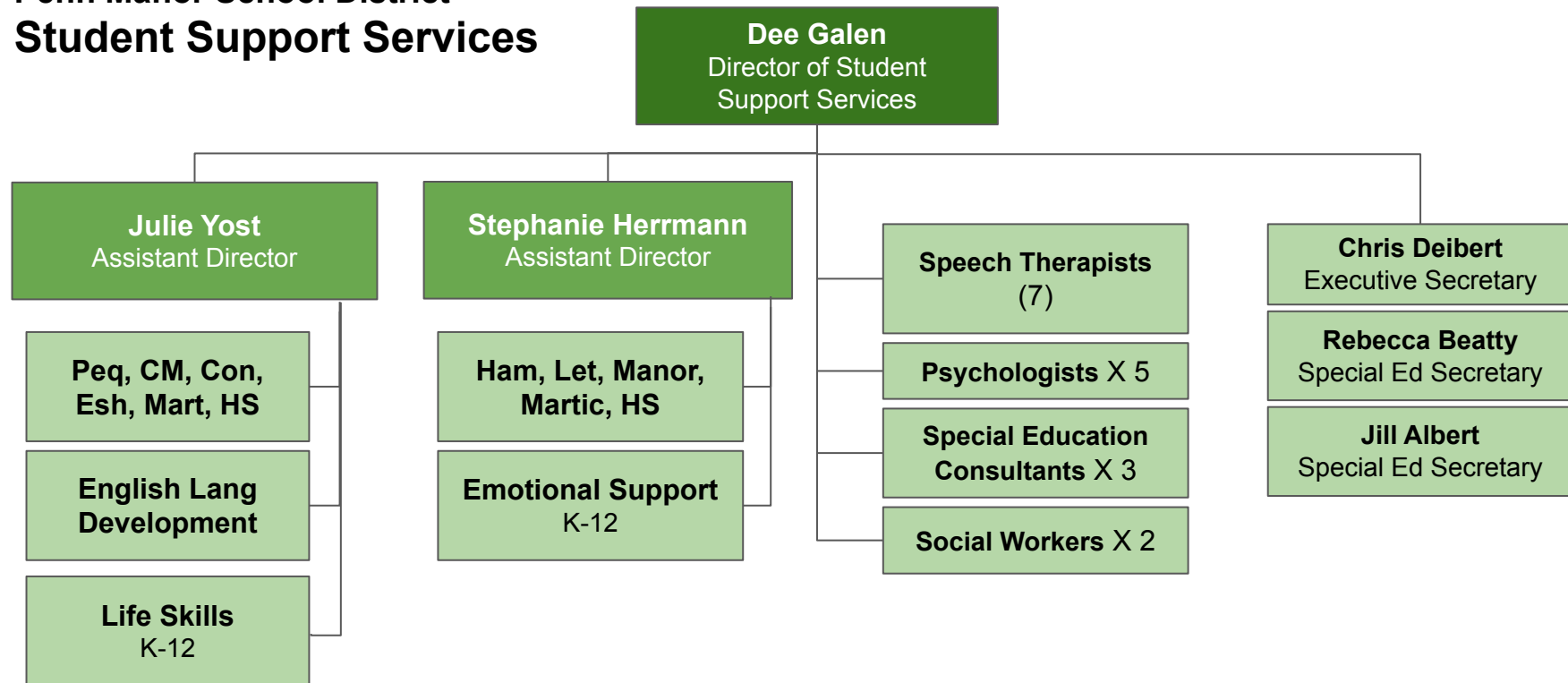
**Instructional
Technology**

**Network & Helpdesk
Operations, E-Rate**

Penn Manor School District
Principals and Curriculum Supervisors



Penn Manor School District Student Support Services



**Business Services, HR,
Buildings and Grounds**

Dan Forry
Chief Financial Officer

Judy Duke
Business Manager

Mike Mohutsky
Accountant and Tax
Coordinator

Gerry Zimmerman
Executive Secretary

Jason McClune
Transportation
Coordinator

Jill Albert
Receptionist
Shared w/ Student Services

Melanie Drennen
Business Office
Secretary

Courtney Kunes
Human Resources Director

Jessica Ayala
Human Resources
Assistant - Staffing

Jill Foster
Human Resources
Assistant - Benefits

Katherine Ortiz
Payroll Coordinator

William Shelley
Buildings & Grounds Director

Isaac Robinson
Asst. Director B&G

Patricia Glasser
Secretary B&G

Maintenance Staff
X 4

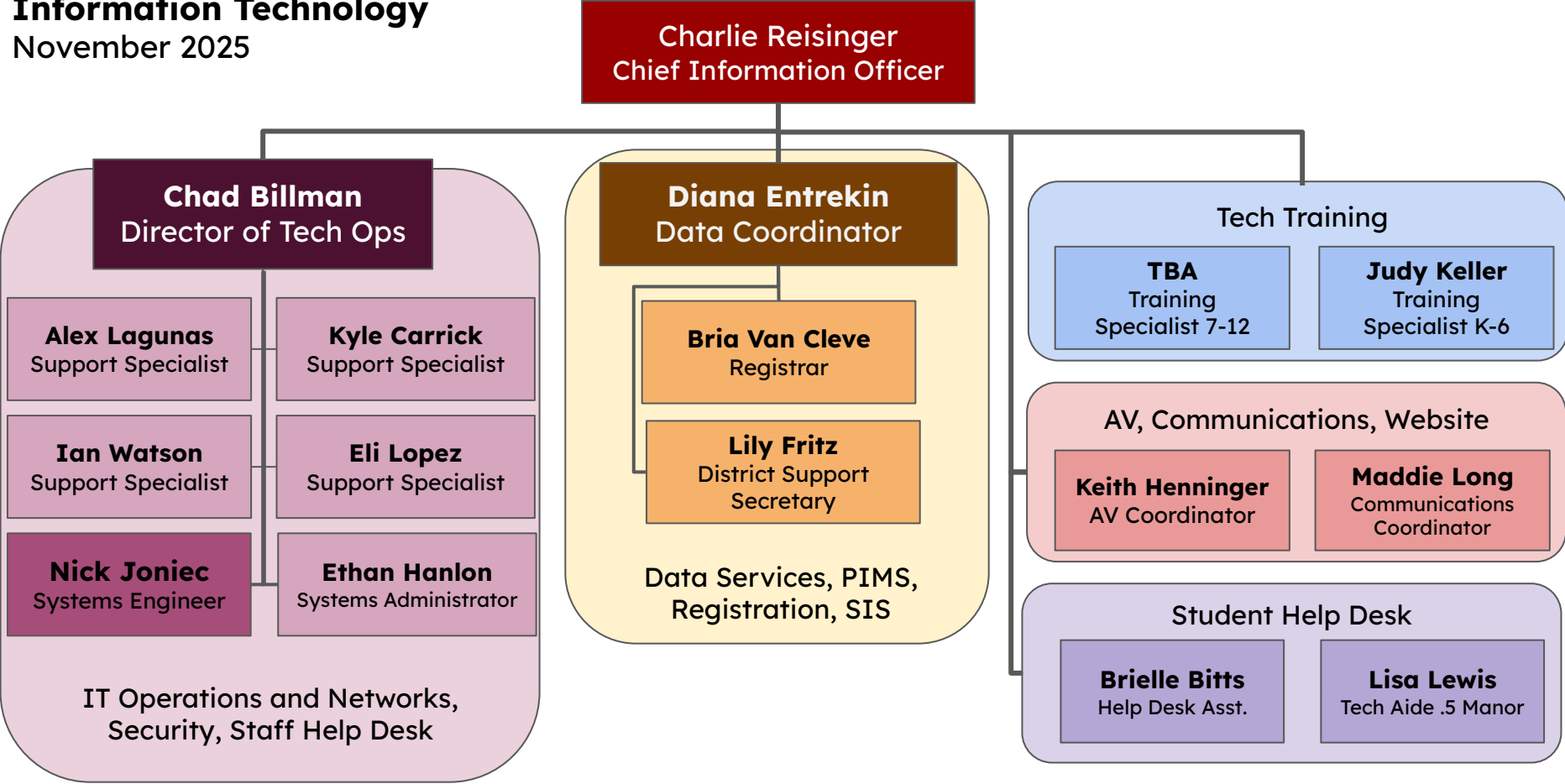
Head Custodians
X 10

Grounds Staff
X 3

Courtney Kolp
Food Services Director

Deanna Witmer
Food Services
Assistant

Cafeteria Managers
X 10





Book	Policy Manual
Section	600 Finances
Title	GASB Statement 34
Code	622
Status	Active
Adopted	September 13, 2010

Purpose

The Board recognizes the need to implement the required accounting and financial reporting standards stipulated by the Pennsylvania Department of Education.

The primary objectives of implementing the GASB Statement 34 are to assure compliance with state requirements, and properly account for both the financial and economic resources of the district.

Authority

Participation of the school district in any such activity shall be in accordance with Board policy.[\[1\]](#)[\[2\]](#)

Delegation of Responsibility

The responsibility to coordinate the compilation and preparation of all information necessary to implement this policy shall be the Superintendent's or designee's.

The designated individual shall be responsible for implementing the necessary procedures to establish and maintain a fixed asset inventory, including depreciation schedules. Depreciation shall be computed on a straight-line basis over the useful lives of the assets, using an averaging convention. Normal maintenance and repairs shall be charged to expense as incurred; major renewals and betterments that materially extend the life or increase the value of the asset shall be capitalized. A schedule of accumulated depreciation shall be consistent from year to year. The basis for depreciation, including groups of assets and useful lives, shall be in writing and submitted for review to the independent auditors.

The Business Manager shall prepare the required Management Discussion and Analysis (MD&A). The MD&A shall be in the form required by GASB Statement 34 and shall be submitted to the Board for approval, prior to publication.

Prior to submission of the MD&A for Board approval, the district's independent auditors shall review the MD&A, in accordance with SAS No. 52, "Required Supplementary Information".

Guidelines

In order to associate debt with acquired assets and to avoid net asset deficits, any asset that has been acquired with debt proceeds shall be capitalized, regardless of the cost of the asset. The asset life of these assets shall be considered relative to the time of the respective debt amortizations.

For all other assets not acquired by debt proceeds, the dollar value of any single item for inclusion in the fixed assets accounts shall be not less than \$5,000.

The capitalization threshold shall be set at a level that will capture at least eighty percent (80%) of all fixed assets.

The assets listed below do not normally individually meet capitalization threshold criteria:

1. Library books.
2. Classroom texts.
3. Computer equipment.
4. Classroom furniture.

These asset category costs shall be capitalized and depreciated as groups when that group's acquisition cost exceeds the capitalization threshold in any given fiscal year.

For group asset depreciation purposes, the estimated useful life of the group may be based on the weighted average or simple average of the useful life of individual items, or on an assessment of the life of the group as a whole. Periodically, the district shall review the estimated life of groups of assets and adjust the remaining depreciation life of the group.

Assets that fall below the capitalization threshold for GASB 34 reporting purposes may still be significant for insurance, warranty service, and obsolescence/replacement policy tracking purposes. The district may record and maintain these non-GASB 34 asset inventories in subsidiary ledgers.

Legal

1. 24 P.S. 218

2. 24 P.S. 613

Governmental Accounting Standards Board, Statement No. 34

[622-AR-0-GASBStmt34.pdf \(14 KB\)](#)

[622-AR-1-ValuationOfCapAssets.pdf \(17 KB\)](#)

[622-AR-2-RecordOfCapAssets.pdf \(19 KB\)](#)

[622-AR-3-CapAsetTypeUsefulLifeChrt.pdf \(13 KB\)](#)

[622-AR-4FixedAssetAddForm.pdf \(10 KB\)](#)

[622-AR-5-FixedAssetChangeForm.pdf \(9 KB\)](#)

LEA : 113365203 Penn Manor SD

Printed 12/12/2025 12:29:50 PM

<u>Val Number</u>	<u>Description</u>	<u>Justification</u>
50480	SESS - 2700 Student Transportation Services: SESS Schedule amounts for Special Education vary from prior year by 40% or more. Correct the data or enter a justification. SESS Schedule 2700: \$938,411.66 Prior Year SESS Schedule 2700: \$614,031.24	Special Education student rosters and needs vary year to year; specialized transportation needs and costs fluctuate year to year

LEA : 113365203 Penn Manor SD

Printed 12/12/2025 12:27:30 PM

Amounts Expressed in Whole Dollars		<u>General Fund</u> <u>(10)</u>	<u>Student Sponsored</u> <u>Activity Fund</u> <u>(21)</u>	<u>Public Purpose Trust</u> <u>(27)</u>	<u>Other Compt Approved</u> <u>(28)</u>	<u>Athletic / Activity</u> <u>(29)</u>
Assets And Deferred Outflows Of Resources						
Assets						
0100	Cash and Cash Equivalents	28,384,119				
0110	Investments					
0120	Taxes Receivable	2,346,841				
0130	Due From Other Funds					
0141	Due From Other Governments					
0142	State Revenue Receivable	3,722,194				
0143	Federal Revenue Receivable	149,496				
0145	Other Intergovernmental Revenue Receivable	862,762				
0146	Due from Primary Government					
0147	Due from Component Unit					
0150	Other Receivables	464,396				
0170	Inventories					
0180	Prepaid Expenses (Expenditures)	5,000				
0190	Other Current Assets					
Total Assets		\$35,934,808				
0910	Deferred Outflows of Resources					
Total Assets And Deferred Outflows Of Resources		\$35,934,808				

LEA : 113365203 Penn Manor SD

Printed 12/12/2025 12:27:30 PM

Amounts Expressed in Whole Dollars		<u>Capital Reserve (690.</u> <u>1850)</u> <u>(31)</u>	<u>Capital Reserve (1431)</u> <u>(32)</u>	<u>Other Capital Projects</u> <u>Fund</u> <u>(39)</u>	<u>Debt Service</u> <u>(40)</u>	<u>Permanent</u> <u>(90)</u>
Assets And Deferred Outflows Of Resources						
Assets						
0100	Cash and Cash Equivalents		1,113,672			
0110	Investments					
0120	Taxes Receivable					
0130	Due From Other Funds					
0141	Due From Other Governments					
0142	State Revenue Receivable					
0143	Federal Revenue Receivable					
0145	Other Intergovernmental Revenue Receivable					
0146	Due from Primary Government					
0147	Due from Component Unit					
0150	Other Receivables					
0170	Inventories					
0180	Prepaid Expenses (Expenditures)					
0190	Other Current Assets					
Total Assets			\$1,113,672			
0910	Deferred Outflows of Resources					
Total Assets And Deferred Outflows Of Resources			\$1,113,672			

LEA : 113365203 Penn Manor SD

Printed 12/12/2025 12:27:30 PM

Amounts Expressed in Whole Dollars		<u>Total Governmental</u> <u>Funds</u>
Assets And Deferred Outflows Of Resources		
Assets		
0100 Cash and Cash Equivalents		29,497,791
0110 Investments		
0120 Taxes Receivable		2,346,841
0130 Due From Other Funds		
0141 Due From Other Governments		
0142 State Revenue Receivable		3,722,194
0143 Federal Revenue Receivable		149,496
0145 Other Intergovernmental Revenue Receivable		862,762
0146 Due from Primary Government		
0147 Due from Component Unit		
0150 Other Receivables		464,396
0170 Inventories		
0180 Prepaid Expenses (Expenditures)		5,000
0190 Other Current Assets		
Total Assets		\$37,048,480
0910 Deferred Outflows of Resources		
Total Assets And Deferred Outflows Of Resources		\$37,048,480

LEA : 113365203 Penn Manor SD

Printed 12/12/2025 12:27:30 PM

Amounts Expressed in Whole Dollars		<u>General Fund</u> <u>(10)</u>	<u>Student Sponsored</u> <u>Activity Fund</u> <u>(21)</u>	<u>Public Purpose Trust</u> <u>(27)</u>	<u>Other Compt Approved</u> <u>(28)</u>	<u>Athletic / Activity</u> <u>(29)</u>
Liabilities And Deferred Inflows Of Resources And Fund Balances						
Liabilities						
0400	Due to Other Funds	24,876				
0411	Due to Other Governments					
0412	Due to Primary Government					
0413	Due to Component Unit					
0420	Accounts Payable	2,882,803				
0430	Contracts Payable					
0440	Current Portion of Long-Term Debt					
0450	Short-Term Payables					
0461	Accrued Salaries and Benefits	10,391,873				
0462	Payroll Deductions and Withholding	82,172				
0480	Unearned Revenues	48,930				
0490	Other Current Liabilities					
Total Liabilities		\$13,430,654				
0950	Deferred Inflows of Resources	539,434				
Fund Balances						
0810	Nonspendable Fund Balance	5,000				
0820	Restricted Fund Balance	49,141				
0830	Committed Fund Balance	14,105,521				
0840	Assigned Fund Balance					
0850	Unassigned Fund Balance	7,805,058				
Total Fund Balances		\$21,964,720				
Total Liabilities, Deferred Inflows Of Resources And Fund Balances		\$35,934,808				

LEA : 113365203 Penn Manor SD

Printed 12/12/2025 12:27:30 PM

Amounts Expressed in Whole Dollars		<u>Capital Reserve (690.</u> <u>1850)</u> <u>(31)</u>	<u>Capital Reserve (1431)</u> <u>(32)</u>	<u>Other Capital Projects</u> <u>Fund</u> <u>(39)</u>	<u>Debt Service</u> <u>(40)</u>	<u>Permanent</u> <u>(90)</u>
Liabilities And Deferred Inflows Of Resources And Fund Balances						
Liabilities						
0400	Due to Other Funds					
0411	Due to Other Governments					
0412	Due to Primary Government					
0413	Due to Component Unit					
0420	Accounts Payable		88,369			
0430	Contracts Payable					
0440	Current Portion of Long-Term Debt					
0450	Short-Term Payables					
0461	Accrued Salaries and Benefits					
0462	Payroll Deductions and Withholding					
0480	Unearned Revenues					
0490	Other Current Liabilities					
Total Liabilities			\$88,369			
0950	Deferred Inflows of Resources					
Fund Balances						
0810	Nonspendable Fund Balance					
0820	Restricted Fund Balance		1,025,303			
0830	Committed Fund Balance					
0840	Assigned Fund Balance					
0850	Unassigned Fund Balance					
Total Fund Balances			\$1,025,303			
Total Liabilities, Deferred Inflows Of Resources And Fund Balances			\$1,113,672			

LEA : 113365203 Penn Manor SD

Printed 12/12/2025 12:27:30 PM

Amounts Expressed in Whole Dollars		<u>Total Governmental</u> <u>Funds</u>
Liabilities And Deferred Inflows Of Resources And Fund Balances		
Liabilities		
0400 Due to Other Funds		24,876
0411 Due to Other Governments		
0412 Due to Primary Government		
0413 Due to Component Unit		
0420 Accounts Payable		2,971,172
0430 Contracts Payable		
0440 Current Portion of Long-Term Debt		
0450 Short-Term Payables		
0461 Accrued Salaries and Benefits		10,391,873
0462 Payroll Deductions and Withholding		82,172
0480 Unearned Revenues		48,930
0490 Other Current Liabilities		
Total Liabilities		\$13,519,023
0950 Deferred Inflows of Resources		539,434
Fund Balances		
0810 Nonspendable Fund Balance		5,000
0820 Restricted Fund Balance		1,074,444
0830 Committed Fund Balance		14,105,521
0840 Assigned Fund Balance		
0850 Unassigned Fund Balance		7,805,058
Total Fund Balances		\$22,990,023
Total Liabilities, Deferred Inflows Of Resources And Fund Balances		\$37,048,480

Amounts Expressed in Whole Dollars	<u>General Fund</u> <u>(10)</u>	<u>Student Sponsored</u> <u>Activity Fund</u> <u>(21)</u>	<u>Public Purpose Trust</u> <u>(27)</u>	<u>Other Compt Approved</u> <u>(28)</u>	<u>Athletic / Activity</u> <u>(29)</u>
Revenues					
6000 Revenue from Local Sources	71,292,406				
7000 Revenue from State Sources	38,469,846				
8000 Revenue from Federal Sources	1,275,029				
Total Revenues	\$111,037,281				
Expenditures					
1000 Instruction	68,633,517				
2000 Support Services	30,729,897				
3000 Operation of Non-Instructional Services	2,059,761				
4000 Facilities Acquisition, Construction and Improvement Services					
5110 Debt Service	9,133,510				
5130 Refund of Prior Year Revenues / Receipts	6,921				
5140 Leases and Other Right-to-Use Arrangements					
Total Expenditures	\$110,563,606				
Excess (Deficiency) Of Revenues Over Expenditures	\$473,675				
Other Financing Sources (Uses)					
9110 Face Value of Bonds Issued					
9120 Proceeds from Refunding of Bonds					
9130 Bond Premiums					
9200 Proceeds from Extended Term Financing, Leases, and Other Right-to-Use Arrangements					
9300 Interfund Transfers - IN					
9400 Sale of or Compensation for Loss of Fixed Assets	4,306				
9710 Transfers from Component Units					
9720 Transfers from Primary Governments					
9910 Other Financing Sources Not Listed in the 9000 Series					
9990 Insurance Recoveries	174,312				
5120 Debt Service – Refunded Bonds					
5150 Bond Discounts					
5200 Interfund Transfers – Out	1,766,658				
5300 Transfers Out to Component Units/Primary Governments					
Total Other Financing Sources (Uses)	(\$1,588,040)				

Amounts Expressed in Whole Dollars		<u>Capital Reserve (690.</u> <u>1850)</u> <u>(31)</u>	<u>Capital Reserve (1431)</u> <u>(32)</u>	<u>Other Capital Projects</u> <u>Fund</u> <u>(39)</u>	<u>Debt Service</u> <u>(40)</u>	<u>Permanent</u> <u>(90)</u>
Revenues						
6000	Revenue from Local Sources		10,076			
7000	Revenue from State Sources					
8000	Revenue from Federal Sources					
Total Revenues			\$10,076			
Expenditures						
1000	Instruction					
2000	Support Services		21,024			
3000	Operation of Non-Instructional Services					
4000	Facilities Acquisition, Construction and Improvement Services		782,672			
5110	Debt Service					
5130	Refund of Prior Year Revenues / Receipts					
5140	Leases and Other Right-to-Use Arrangements					
Total Expenditures			\$803,696			
Excess (Deficiency) Of Revenues Over Expenditures			(\$793,620)			
Other Financing Sources (Uses)						
9110	Face Value of Bonds Issued					
9120	Proceeds from Refunding of Bonds					
9130	Bond Premiums					
9200	Proceeds from Extended Term Financing, Leases, and Other Right-to-Use Arrangements					
9300	Interfund Transfers - IN		1,750,000			
9400	Sale of or Compensation for Loss of Fixed Assets					
9710	Transfers from Component Units					
9720	Transfers from Primary Governments					
9910	Other Financing Sources Not Listed in the 9000 Series					
9990	Insurance Recoveries					
5120	Debt Service – Refunded Bonds					
5150	Bond Discounts					
5200	Interfund Transfers – Out					
5300	Transfers Out to Component Units/Primary Governments					
Total Other Financing Sources (Uses)			\$1,750,000			

Amounts Expressed in Whole Dollars		<u>Total Governmental Funds</u>
Revenues		
6000	Revenue from Local Sources	71,302,482
7000	Revenue from State Sources	38,469,846
8000	Revenue from Federal Sources	1,275,029
Total Revenues		\$111,047,357
Expenditures		
1000	Instruction	68,633,517
2000	Support Services	30,750,921
3000	Operation of Non-Instructional Services	2,059,761
4000	Facilities Acquisition, Construction and Improvement Services	782,672
5110	Debt Service	9,133,510
5130	Refund of Prior Year Revenues / Receipts	6,921
5140	Leases and Other Right-to-Use Arrangements	
Total Expenditures		\$111,367,302
Excess (Deficiency) Of Revenues Over Expenditures		(\$319,945)
Other Financing Sources (Uses)		
9110	Face Value of Bonds Issued	
9120	Proceeds from Refunding of Bonds	
9130	Bond Premiums	
9200	Proceeds from Extended Term Financing, Leases, and Other Right-to-Use Arrangements	
9300	Interfund Transfers - IN	1,750,000
9400	Sale of or Compensation for Loss of Fixed Assets	4,306
9710	Transfers from Component Units	
9720	Transfers from Primary Governments	
9910	Other Financing Sources Not Listed in the 9000 Series	
9990	Insurance Recoveries	174,312
5120	Debt Service – Refunded Bonds	
5150	Bond Discounts	
5200	Interfund Transfers – Out	1,766,658
5300	Transfers Out to Component Units/Primary Governments	
Total Other Financing Sources (Uses)		\$161,960

Amounts Expressed in Whole Dollars		<u>General Fund</u> <u>(10)</u>	<u>Student Sponsored</u> <u>Activity Fund</u> <u>(21)</u>	<u>Public Purpose Trust</u> <u>(27)</u>	<u>Other Compt Approved</u> <u>(28)</u>	<u>Athletic / Activity</u> <u>(29)</u>
Special And Extraordinary Items						
9920	Special Items – Gains					
9930	Extraordinary Items – Gains					
5520	Special Items – Losses					
5530	Extraordinary Items – Losses					
Net Change In Fund Balances		(\$1,114,365)				
Fund Balance						
0001	Fund Balance - Beginning of Fiscal Year	23,079,084				
Fund Balance - End Of Year		\$21,964,719				

Amounts Expressed in Whole Dollars		<u>Capital Reserve (690.</u> <u>1850)</u> <u>(31)</u>	<u>Capital Reserve (1431)</u> <u>(32)</u>	<u>Other Capital Projects</u> <u>Fund</u> <u>(39)</u>	<u>Debt Service</u> <u>(40)</u>	<u>Permanent</u> <u>(90)</u>
Special And Extraordinary Items						
9920	Special Items – Gains					
9930	Extraordinary Items – Gains					
5520	Special Items – Losses					
5530	Extraordinary Items – Losses					
Net Change In Fund Balances			\$956,380			
Fund Balance						
0001	Fund Balance - Beginning of Fiscal Year		68,924			
Fund Balance - End Of Year			\$1,025,304			

Amounts Expressed in Whole Dollars		<u>Total Governmental</u> <u>Funds</u>
Special And Extraordinary Items		
9920	Special Items – Gains	
9930	Extraordinary Items – Gains	
5520	Special Items – Losses	
5530	Extraordinary Items – Losses	
Net Change In Fund Balances		(\$157,985)
Fund Balance		
0001	Fund Balance - Beginning of Fiscal Year	23,148,008
Fund Balance - End Of Year		\$22,990,023

LEA : 113365203 Penn Manor SD

Printed 12/12/2025 12:27:39 PM

Amounts Expressed in Whole Dollars	<u>Food Service</u> (51)	<u>Child Care</u> <u>Operations</u> (52)	<u>Other Enterprise</u> (58)	<u>TOTAL</u>	<u>Internal Service</u> (60)
Assets And Deferred Outflows Of Resources					
Current Assets					
0100 Cash and Cash Equivalents	2,625,980			2,625,980	
0110 Investments					
0130 Due From Other Funds	24,876			24,876	
0141 Due From Other Governments					
0142 State Revenue Receivable					
0143 Federal Revenue Receivable					
0146 Due from Primary Government					
0147 Due from Component Unit					
0150 Other Receivables	2,677			2,677	
0170 Inventories	67,848			67,848	
0180 Prepaid Expenses (Expenditures)					
0190 Other Current Assets					
Total Current Assets	\$2,721,381			\$2,721,381	
Noncurrent Assets					
0211 Land					
0212 Site Improvements (Net)					
0220 Buildings and Building Improvements (Net)					
0230 Tangible Property and Intangible Right-To-Use Assets (Net)	733,088			733,088	
0250 Construction in Progress					
0260 Long Term Prepayments					
0290 Other Noncurrent Assets					
Total Noncurrent Assets	\$733,088			\$733,088	
0910 Deferred Outflows of Resources					
Total Assets And Deferred Outflows Of Resources	\$3,454,469			\$3,454,469	

LEA : 113365203 Penn Manor SD

Printed 12/12/2025 12:27:39 PM

Amounts Expressed in Whole Dollars	<u>Food Service</u> <u>(51)</u>	<u>Child Care</u> <u>Operations</u> <u>(52)</u>	<u>Other Enterprise</u> <u>(58)</u>	<u>TOTAL</u>	<u>Internal Service</u> <u>(60)</u>
Liabilities And Deferred Inflows Of Resources And Net Position					
Current Liabilities					
0400 Due to Other Funds					
0411 Due to Other Governments					
0413 Due to Component Unit					
0420 Accounts Payable	322,356			322,356	
0430 Contracts Payable					
0440 Current Portion of Long-Term Debt	11,227			11,227	
0450 Short-Term Payables					
0461 Accrued Salaries and Benefits					
0462 Payroll Deductions and Withholding					
0480 Unearned Revenues	2,644			2,644	
0490 Other Current Liabilities					
Total Current Liabilities	\$336,227			\$336,227	
Noncurrent Liabilities					
0510 Bonds Payable					
0520 Extended-Term Financing Agreements Payable					
0530 Lease and Other Right-To-Use Obligations					
0540 Accumulated Compensated Absences	88,797			88,797	
0550 Authority Lease Obligations					
0560 Other Post-Employment Benefits (OPEB)					
0570 Net Pension Liability					
0599 Other Noncurrent Liabilities					
Total Noncurrent Liabilities	\$88,797			\$88,797	
Total Liabilities	\$425,024			\$425,024	
0950 Deferred Inflows of Resources					
Net Position					
0791 Net Investment in Capital Assets	733,088			733,088	
0008 Restricted Net Position (0792 – 0798)					
0799 Unrestricted Net Position	2,296,357			2,296,357	
Total Net Position	\$3,029,445			\$3,029,445	
Total Liabilities And Deferred Inflows Of Resources And Net Position	\$3,454,469			\$3,454,469	

Amounts Expressed in Whole Dollars		<u>Food Service</u> <u>(51)</u>	<u>Child Care Operations</u> <u>(52)</u>	<u>Other Enterprise</u> <u>(58)</u>	<u>TOTAL</u>	<u>Internal Service</u> <u>(60)</u>
Operating Revenues						
6600	Food Service Revenue	890,766			890,766	
0071	Charges for Services					
0072	Other Operating Revenue	58,600			58,600	
Total Operating Revenues		\$949,366			\$949,366	
Operating Expenses						
100	Personnel Services – Salaries	986,354			986,354	
200	Personnel Services – Employee Benefits	864,123			864,123	
300	Purchased Professional and Technical Services	8,574			8,574	
400	Purchased Property Services	80,950			80,950	
500	Other Purchased Services	2,319			2,319	
600	Supplies	1,949,180			1,949,180	
740	Depreciation	49,346			49,346	
770	Amortization Expense					
810	Dues and Fees	685			685	
880	Refunds of Prior Years' Receipts					
890	Miscellaneous Expenditures	16,657			16,657	
Total Operating Expenses		\$3,958,188			\$3,958,188	
Operating Income (Loss)		(\$3,008,822)			(\$3,008,822)	
Non Operating Revenues (Expenses)						
6500	Earnings on Investments	84,955			84,955	
6830	Federal Revenue from Intermediary Sources					
6920	Contributions and Donations from Private Sources					
6930	Gains or Losses on Sale of Fixed Assets					
6991	Refunds of a Prior Year Expenditure					
7000	Revenue from State Sources	636,878			636,878	
8000	Revenue from Federal Sources	2,144,706			2,144,706	
9990	Insurance Recoveries					
820	Claims and Judgments Against the LEA					
830	Interest					
TOTAL Non Operating Revenues (Expenses)		\$2,866,539			\$2,866,539	
Income (Loss) Before Contributions And Transfers		(\$142,283)			(\$142,283)	

Amounts Expressed in Whole Dollars	<u>Food Service</u> <u>(51)</u>	<u>Child Care Operations</u> <u>(52)</u>	<u>Other Enterprise</u> <u>(58)</u>	<u>TOTAL</u>	<u>Internal Service</u> <u>(60)</u>
Contributions, Transfers, and Special and Extraordinary Items					
5200 Interfund Transfers – Out					
5300 Transfers Out to Component Units/Primary Governments					
5520 Special Items – Losses					
5530 Extraordinary Items – Losses					
9300 Interfund Transfers - IN	16,658			16,658	
9500 Capital Contributions					
9700 Transfers IN From Component Units/Primary Governments					
9920 Special Items – Gains					
9930 Extraordinary Items – Gains					
Change In Net Position	(\$125,625)			(\$125,625)	
0002 Net Position - Beginning of Fiscal Year	3,155,070			3,155,070	
0003 Accounting Changes / Residual Equity Transfers					
Net Position - End Of Year	\$3,029,445			\$3,029,445	

LEA : 113365203 Penn Manor SD

Printed 12/12/2025 12:27:50 PM

Amounts Expressed in Whole Dollars		<u>Food Service</u> <u>(51)</u>	<u>Child Care Operations</u> <u>(52)</u>	<u>Other Enterprise</u> <u>(58)</u>	<u>TOTAL</u>	<u>Internal Service(60)</u>
Cash Flows From Operating Activities						
0011	Cash Receipts From Users	915,349			915,349	
0012	Cash Receipts From Assessments Made to Other Funds					
0013	Cash Receipts From Earnings on Investments					
0014	Cash Receipts From Other Operating Revenue					
0015	Cash Payments To Employees For Services	1,781,558			1,781,558	
0016	Cash Payments For Insurance Claims					
0017	Cash Payments To Suppliers For Goods and Services	1,526,595			1,526,595	
0018	Cash Payments For Other Operating Expenses					
Net Cash Provided By (Used For) Operating Activities		(\$2,392,804)			(\$2,392,804)	
Cash Flows From Non-Capital Financing Activities						
0021	Receipts From Local Sources - 6000					
0022	Receipts From State Sources - 7000	636,878			636,878	
0023	Receipts From Federal Sources -8000	1,921,658			1,921,658	
0024	Notes and Loans Received (Repaid)					
0025	Interest Paid on Notes/Loans - 5100-830					
0026	Operating Transfers In (Out)/Residual Equity Trans	16,658			16,658	
0027	Operating Transfers In (Out) Primary Government / Comp Unit					
0028	Receipts From Refund of Prior Year Expenditures - 6991					
0029	Special and Extraordinary Gains (losses)					
0030	Receipts from Insurance Recoveries -9990					
Net Cash Prov By (Used for) Non-Capital Financing Activities		\$2,575,194			\$2,575,194	
Cash Flows From Capital and Related Financing Activities						
0031	Payments For Fac Acq, Const, and Imp - 4000	(367,268)			(367,268)	
0032	Proceeds from Disposal of Capital Assets					
0033	Proceeds From Extended Term Financing - 9200					
0034	Principal Paid on Financing Agreements					
0035	Interest Paid on Financing Agreements - 5100-830					
0036	(Inc) Dec in Contributed Capital					
Net Cash Prov By (Used for) Capital and Related Financing Activities		(\$367,268)			(\$367,268)	
Cash Flows From Investing Activities						
0041	Earnings on Investments - 6500	84,955			84,955	
0042	Purchase of Inv Securities / Deposits to Inv Pools					
0043	Receipts From Investment Pool Withdrawals					
0044	Proceeds from Sale and Maturity of Inv Securities					

LEA : 113365203 Penn Manor SD

Printed 12/12/2025 12:27:50 PM

0045 Loans Received (Paid)

Net Cash Prov By (Used for) Investing Activities	\$84,955	\$84,955
--	----------	----------

LEA : 113365203 Penn Manor SD

Printed 12/12/2025 12:27:50 PM

	<u>Food Service</u> <u>(51)</u>	<u>Child Care Operations</u> <u>(52)</u>	<u>Other Enterprise</u> <u>(58)</u>	<u>TOTAL</u>	<u>Internal Service</u> <u>(60)</u>
Net Increase (Decrease) in Cash Flows	(99,923)			(99,923)	
0004 Cash and Cash Equivalents Beginning of Year	2,725,903			2,725,903	
Cash and Cash Equivalents at Year End	\$2,625,980			\$2,625,980	
Reconciliation of Operating Income (Loss) To Net Cash Provided by (Used For) Operating Activities					
0005 Operating Income (Loss) per REP	(3,008,822)			(3,008,822)	
Adjustments					
0051 Depreciation and Net Amortization	49,346			49,346	
0052 Provision for Uncollectible Accounts					
0053 Other Adjustments	223,048			223,048	
Effect of Changes in Assets, Liabilities, Deferred Outflows and Deferred Inflows					
0054 (Inc) Dec In Accounts Receivable (0120-0150)	(12,193)			(12,193)	
0055 Advances to Other Funds					
0056 (Inc) Dec in Inventories (0170)	3,348			3,348	
0057 (Inc) Dec in Prepaid Expenses (0180)					
0058 (Inc) Dec in Other Current or Noncurrent Assets					
0064 Deferred Outflows (0910)					
0059 Inc (Dec) in Accounts Payable (0400-0450)	384,950			384,950	
0060 Inc (Dec) in Accrued Salaries/Benefits (0461)					
0065 Inc (Dec) in Net Pension Liabilities (0570)					
0066 Inc (Dec) in Other Postemp Benefit Oblig (0560)					
0061 Inc (Dec) in Payroll Deductions/Withholding (0462)					
0062 Inc (Dec) in Unearned Revenue (0480)	(32,481)			(32,481)	
0063 Inc (Dec) in Other Current or Noncurrent Liabilities					
0067 Deferred Inflows (0950)					
Total Adjustments	\$616,018			\$616,018	
Cash Provided By (Used for) Total	(\$2,392,804)			(\$2,392,804)	

COMBINED STATEMENT OF CASH FLOWS
SCHEDULE OF NONCASH INVESTING, CAPITAL, AND FINANCING ACTIVITIES

Explanation of Transaction and Balance Sheet Effect	Amount
Total	

LEA : 113365203 Penn Manor SD

Printed 12/12/2025 12:27:52 PM

Amounts Expressed in Whole Dollars		<u>Private Purpose Trust</u> <u>(71)</u>	<u>Investment Trust</u> <u>(72)</u>	<u>Pension Trust</u> <u>(73)</u>	<u>Student Activity Custodial</u> <u>(81)</u>
Assets And Deferred Outflows Of Resources					
Assets					
0100	Cash and Cash Equivalents				179,252
0110	Investments				
0130	Due From Other Funds				
0140	Due from Other Governments, Primary Government and Component Units				
0150	Other Receivables				
0170	Inventories				
0180	Prepaid Expenses (Expenditures)				
0190	Other Current Assets				
0220	Buildings and Building Improvements (Net)				
0230	Tangible Property and Intangible Right-To-Use Assets (Net)				
Total Assets					\$179,252
0910	Deferred Outflows of Resources				
Total Assets And Deferred Outflows Of Resources					\$179,252

LEA : 113365203 Penn Manor SD

Printed 12/12/2025 12:27:52 PM

Amounts Expressed in Whole Dollars		<u>Other Custodial</u> <u>(89)</u>	<u>Fiduciary Component Units</u> <u>(98)</u>	<u>Total Fiduciary Funds</u>
Assets And Deferred Outflows Of Resources				
Assets				
0100	Cash and Cash Equivalents			179,252
0110	Investments			
0130	Due From Other Funds			
0140	Due from Other Governments, Primary Government and Component Units			
0150	Other Receivables			
0170	Inventories			
0180	Prepaid Expenses (Expenditures)			
0190	Other Current Assets			
0220	Buildings and Building Improvements (Net)			
0230	Tangible Property and Intangible Right-To-Use Assets (Net)			
Total Assets				\$179,252
0910	Deferred Outflows of Resources			
Total Assets And Deferred Outflows Of Resources				\$179,252

LEA : 113365203 Penn Manor SD

Printed 12/12/2025 12:27:52 PM

Amounts Expressed in Whole Dollars		<u>Private Purpose Trust</u> <u>(71)</u>	<u>Investment Trust</u> <u>(72)</u>	<u>Pension Trust</u> <u>(73)</u>	<u>Student Activity Custodial</u> <u>(81)</u>
Liabilities, Deferred Inflows Of Resources And Net Position					
Liabilities					
0400	Due to Other Funds				
0410	Due to Other Governments, Primary Government and Component Units				
0420	Accounts Payable				8,675
0430	Contracts Payable				
0450	Short-Term Payables				
0460	Payroll Accruals and Withholdings				
0480	Unearned Revenues				
0490	Other Current Liabilities				
Total Liabilities					\$8,675
0950	Deferred Inflows of Resources				
Net Position					
0791	Net Investment in Capital Assets				
0009	Restricted Net Position (0792 – 0798)				170,577
0799	Unrestricted Net Position				
Total Net Position					\$170,577
Total Liabilities, Deferred Inflows Of Resources And Net Position					\$179,252

LEA : 113365203 Penn Manor SD

Printed 12/12/2025 12:27:52 PM

Amounts Expressed in Whole Dollars		<u>Other Custodial</u> <u>(89)</u>	<u>Fiduciary Component Units</u> <u>(98)</u>	<u>Total Fiduciary Funds</u>
Liabilities, Deferred Inflows Of Resources And Net Position				
Liabilities				
0400	Due to Other Funds			
0410	Due to Other Governments, Primary Government and Component Units			
0420	Accounts Payable			8,675
0430	Contracts Payable			
0450	Short-Term Payables			
0460	Payroll Accruals and Withholdings			
0480	Unearned Revenues			
0490	Other Current Liabilities			
Total Liabilities				\$8,675
0950	Deferred Inflows of Resources			
Net Position				
0791	Net Investment in Capital Assets			
0009	Restricted Net Position (0792 – 0798)			170,577
0799	Unrestricted Net Position			
Total Net Position				\$170,577
Total Liabilities, Deferred Inflows Of Resources And Net Position				\$179,252

LEA : 113365203 Penn Manor SD

Printed 12/12/2025 12:27:54 PM

Amounts Expressed in Whole Dollars		<u>Private Purpose Trust</u> <u>(71)</u>	<u>Investment Trust</u> <u>(72)</u>	<u>Pension Trust</u> <u>(73)</u>	<u>Student Activity</u> <u>Custodial</u> <u>(81)</u>	<u>Other Custodial</u> <u>(89)</u>	<u>Fiduciary Component</u> <u>Units</u> <u>(98)</u>
Additions							
0091	Gifts and Contributions						
0095	Net Investment Earnings						
0092	Other Additions				308,378		
Deductions							
0093	Scholarships Awarded						
0094	Other Deductions				292,877		
Change In Net Position					\$15,501		
0006	Net Position – Beginning of Fiscal Year				155,076		
0007	Net Position Held in Trust for Pension Benefits						
Net Position - End of Fiscal Year					\$170,577		

LEA : 113365203 Penn Manor SD

Printed 12/12/2025 12:27:54 PM

Amounts Expressed in Whole Dollars		<u>Total Fiduciary</u> <u>Funds</u>
Additions		
0091	Gifts and Contributions	
0095	Net Investment Earnings	
0092	Other Additions	308,378
Deductions		
0093	Scholarships Awarded	
0094	Other Deductions	292,877
Change In Net Position		\$15,501
0006	Net Position – Beginning of Fiscal Year	155,076
0007	Net Position Held in Trust for Pension Benefits	
Net Position - End of Fiscal Year		\$170,577

	Revenue Reported In Current Year	Current Year Tax Accrual	Prior Year Tax Accrual	Taxes Collected In Current Year
Revenue from Local Sources				
6111 Current Real Estate Taxes	56,512,460.66			56,512,460.66
6112 Interim Real Estate Taxes	254,843.12	22,099.00	13,771.00	246,515.12
6113 Public Utility Realty Taxes	60,113.52			60,113.52
6114 Payments in Lieu of Current Taxes - State / Local	200,830.23			200,830.23
6151 Current Act 511 Earned Income Taxes	7,232,663.21	1,477,072.00	1,329,251.00	7,084,842.21
6153 Current Act 511 Real Estate Transfer Taxes	1,205,433.65	100,034.00	202,245.00	1,307,644.65
6411 Delinquent Real Estate Taxes	1,107,143.51	205,360.00	185,502.00	1,087,285.51
6500 Earnings on Investments	2,139,185.77			
6700 Revenues from LEA Activities	61,778.67			
6831 Federal Revenue Received from Other Pennsylvania Public LEAs	197,813.20			
6832 Federal IDEA Revenue Received as Pass Through	1,131,200.00			
6910 Rentals	212,258.93			
6920 Contributions and Donations from Private Sources	4,870.98			
6944 Receipts from Other LEAs in Pennsylvania - Education	313,168.47			
6999 Other Revenues Not Specified Above	658,641.93			
TOTAL Revenue from Local Sources	\$71,292,405.85	\$1,804,565.00	\$1,730,769.00	\$66,499,691.90

	Revenue Reported In Current Year			
<u>Revenue from State Sources</u>				
7111 Basic Education Funding-Formula	15,241,729.23			
7140 Charter Schools	186,243.09			
7160 Tuition for Orphans Subsidy	48,833.84			
7220 Vocational Education	148,885.68			
7250 Migratory Children	989.00			
7271 Special Education funds for School-Aged Pupils	4,099,657.28			
7311 Pupil Transportation Subsidy	2,531,837.11			
7312 Nonpublic and Charter School Pupil Transportation Subsidy	116,270.00			
7320 Rental and Sinking Fund Payments / Building Reimbursement Subsidy	524,105.25			
7331 State Reimbursement for Health Services	98,561.30			
7332 Feminine Hygiene Product Funding	9,675.75			
7340 State Property Tax Reduction Allocation	1,973,742.23			
7362 School Mental Health & Safety and Security Grants	646,772.78			
7369 Other Safe School Grants	45,000.00			
7531 Ready to Learn-Foundation	620,860.00			
7532 Ready to Learn-Adequacy Supplement	2,766,098.43			
7599 Other State Revenue Not Listed Elsewhere in the 7000 Series	285,562.16			
7810 State Share of Social Security and Medicare Taxes	1,653,461.69			
7820 State Share of Retirement Contributions	7,471,561.54			
TOTAL Revenue from State Sources	\$38,469,846.36			

Revenue Reported In Current Year				
Revenue from Federal Sources				
8514 Title I - Improving the Academic Achievement of the Disadvantaged	985,395.62			
8515 Title II - Preparing, Training, and Recruiting High Quality Teachers and Principals	205,364.34			
8517 Title IV - 21st Century Schools	71,566.00			
8820 Medical Assistance Reimbursement for Administrative Claiming (Quarterly) Program	12,702.97			
TOTAL Revenue from Federal Sources	\$1,275,028.93			

Revenue Reported <u>In Current Year</u>				
<u>Other Financing Sources</u>				
9400 Sale of or Compensation for Loss of Fixed Assets	4,306.00			
9990 Insurance Recoveries	174,311.90			
TOTAL Other Financing Sources	\$178,617.90			
TOTAL FROM ALL SOURCES	\$111,215,899.04	\$1,804,565.00	\$1,730,769.00	\$66,499,691.90

LEA : 113365203 Penn Manor SD

Printed 12/12/2025 12:27:59 PM

	<u>General Fund (10)</u>	<u>Student Sponsored Activity Fund (21)</u>	<u>Public Purpose Trust (27)</u>	<u>Other Compt Approved (28)</u>	<u>Athletic / Activity (29)</u>	<u>Capital Reserve (690, 1850) (31)</u>
6000 Revenue from Local Sources						
6111 Current Real Estate Taxes	56,512,460.66					
6112 Interim Real Estate Taxes	254,843.12					
6113 Public Utility Realty Taxes	60,113.52					
6114 Payments in Lieu of Current Taxes - State / Local	200,830.23					
6151 Current Act 511 Earned Income Taxes	7,232,663.21					
6153 Current Act 511 Real Estate Transfer Taxes	1,205,433.65					
6411 Delinquent Real Estate Taxes	1,107,143.51					
6500 Earnings on Investments	2,139,185.77					
6700 Revenues from LEA Activities	61,778.67					
6831 Federal Revenue Received from Other Pennsylvania Public LEAs	197,813.20					
6832 Federal IDEA Revenue Received as Pass Through	1,131,200.00					
6910 Rentals	212,258.93					
6920 Contributions and Donations from Private Sources	4,870.98					
6944 Receipts from Other LEAs in Pennsylvania - Education	313,168.47					
6999 Other Revenues Not Specified Above	658,641.93					
6000 Total Revenue from Local Sources	\$71,292,405.85					
7000 Revenue from State Sources						
7111 Basic Education Funding-Formula	15,241,729.23					
7140 Charter Schools	186,243.09					
7160 Tuition for Orphans Subsidy	48,833.84					
7220 Vocational Education	148,885.68					
7250 Migratory Children	989.00					
7271 Special Education funds for School-Aged Pupils	4,099,657.28					
7311 Pupil Transportation Subsidy	2,531,837.11					
7312 Nonpublic and Charter School Pupil Transportation Subsidy	116,270.00					
7320 Rental and Sinking Fund Payments / Building Reimbursement Subsidy	524,105.25					
7331 State Reimbursement for Health Services	98,561.30					
7332 Feminine Hygiene Product Funding	9,675.75					
7340 State Property Tax Reduction Allocation	1,973,742.23					
7362 School Mental Health & Safety and Security Grants	646,772.78					
7369 Other Safe School Grants	45,000.00					
7531 Ready to Learn-Foundation	620,860.00					
7532 Ready to Learn-Adequacy Supplement	2,766,098.43					
7599 Other State Revenue Not Listed Elsewhere in the 7000 Series	285,562.16					
7810 State Share of Social Security and Medicare Taxes	1,653,461.69					

LEA : 113365203 Penn Manor SD

Printed 12/12/2025 12:27:59 PM

	<u>Capital Reserve</u> <u>(1431) (32)</u>	<u>Other Capital</u> <u>Projects Fund (39)</u>	<u>Debt Service (40)</u>	<u>Permanent (90)</u>	<u>Total</u>
6000 Revenue from Local Sources					
6111 Current Real Estate Taxes					56,512,460.66
6112 Interim Real Estate Taxes					254,843.12
6113 Public Utility Realty Taxes					60,113.52
6114 Payments in Lieu of Current Taxes - State / Local					200,830.23
6151 Current Act 511 Earned Income Taxes					7,232,663.21
6153 Current Act 511 Real Estate Transfer Taxes					1,205,433.65
6411 Delinquent Real Estate Taxes					1,107,143.51
6500 Earnings on Investments	10,076.19				2,149,261.96
6700 Revenues from LEA Activities					61,778.67
6831 Federal Revenue Received from Other Pennsylvania Public LEAs					197,813.20
6832 Federal IDEA Revenue Received as Pass Through					1,131,200.00
6910 Rentals					212,258.93
6920 Contributions and Donations from Private Sources					4,870.98
6944 Receipts from Other LEAs in Pennsylvania - Education					313,168.47
6999 Other Revenues Not Specified Above					658,641.93
6000 Total Revenue from Local Sources	\$10,076.19				\$71,302,482.04
7000 Revenue from State Sources					
7111 Basic Education Funding-Formula					15,241,729.23
7140 Charter Schools					186,243.09
7160 Tuition for Orphans Subsidy					48,833.84
7220 Vocational Education					148,885.68
7250 Migratory Children					989.00
7271 Special Education funds for School-Aged Pupils					4,099,657.28
7311 Pupil Transportation Subsidy					2,531,837.11
7312 Nonpublic and Charter School Pupil Transportation Subsidy					116,270.00
7320 Rental and Sinking Fund Payments / Building Reimbursement Subsidy					524,105.25
7331 State Reimbursement for Health Services					98,561.30
7332 Feminine Hygiene Product Funding					9,675.75
7340 State Property Tax Reduction Allocation					1,973,742.23
7362 School Mental Health & Safety and Security Grants					646,772.78
7369 Other Safe School Grants					45,000.00
7531 Ready to Learn-Foundation					620,860.00
7532 Ready to Learn-Adequacy Supplement					2,766,098.43
7599 Other State Revenue Not Listed Elsewhere in the 7000 Series					285,562.16
7810 State Share of Social Security and Medicare Taxes					1,653,461.69

LEA : 113365203 Penn Manor SD

Printed 12/12/2025 12:27:59 PM

	<u>General Fund (10)</u>	<u>Student Sponsored Activity Fund (21)</u>	<u>Public Purpose Trust (27)</u>	<u>Other Compt Approved (28)</u>	<u>Athletic / Activity (29)</u>	<u>Capital Reserve (690, 1850) (31)</u>
7000 Revenue from State Sources						
7820 State Share of Retirement Contributions	7,471,561.54					
7000 Total Revenue from State Sources	\$38,469,846.36					
8000 Revenue from Federal Sources						
8514 Title I - Improving the Academic Achievement of the Disadvantaged	985,395.62					
8515 Title II - Preparing, Training, and Recruiting High Quality Teachers and Principals	205,364.34					
8517 Title IV - 21st Century Schools	71,566.00					
8820 Medical Assistance Reimbursement for Administrative Claiming (Quarterly) Program	12,702.97					
8000 Total Revenue from Federal Sources	\$1,275,028.93					
9000 Other Financing Sources						
9310 General Fund Transfers						
9400 Sale of or Compensation for Loss of Fixed Assets	4,306.00					
9990 Insurance Recoveries	174,311.90					
9000 Total Other Financing Sources	\$178,617.90					
Total From All Sources	\$111,215,899.04					

LEA : 113365203 Penn Manor SD

Printed 12/12/2025 12:27:59 PM

	<u>Capital Reserve</u> <u>(1431) (32)</u>	<u>Other Capital</u> <u>Projects Fund (39)</u>	<u>Debt Service (40)</u>	<u>Permanent (90)</u>	<u>Total</u>
7000 Revenue from State Sources					
7820 State Share of Retirement Contributions					7,471,561.54
7000 Total Revenue from State Sources					\$38,469,846.36
8000 Revenue from Federal Sources					
8514 Title I - Improving the Academic Achievement of the Disadvantaged					985,395.62
8515 Title II - Preparing, Training, and Recruiting High Quality Teachers and Principals					205,364.34
8517 Title IV - 21st Century Schools					71,566.00
8820 Medical Assistance Reimbursement for Administrative Claiming (Quarterly) Program					12,702.97
8000 Total Revenue from Federal Sources					\$1,275,028.93
9000 Other Financing Sources					
9310 General Fund Transfers	1,750,000.00				1,750,000.00
9400 Sale of or Compensation for Loss of Fixed Assets					4,306.00
9990 Insurance Recoveries					174,311.90
9000 Total Other Financing Sources	\$1,750,000.00				\$1,928,617.90
Total From All Sources	\$1,760,076.19				\$112,975,975.23

LEA : 113365203 Penn Manor SD

Printed 12/12/2025 12:28:01 PM

	<u>General Fund (10)</u>	<u>Student Sponsored Activity Fund (21)</u>	<u>Public Purpose Trust (27)</u>	<u>Other Compt Approved (28)</u>	<u>Athletic / Activity (29)</u>	<u>Capital Reserve (690. 1850) (31)</u>
Revenue from Local Sources	71,292,405.85					
Revenue from State Sources	38,469,846.36					
Revenue from Federal Sources	1,275,028.93					
Other Financing Sources	178,617.90					
Total From All Sources	\$111,215,899.04					

LEA : 113365203 Penn Manor SD

Printed 12/12/2025 12:28:01 PM

	<u>Capital Reserve (1431)</u> <u>(32)</u>	<u>Other Capital Projects</u> <u>Fund (39)</u>	<u>Debt Service (40)</u>	<u>Permanent (90)</u>	<u>Total</u>
Revenue from Local Sources	10,076.19				71,302,482.04
Revenue from State Sources					38,469,846.36
Revenue from Federal Sources					1,275,028.93
Other Financing Sources	1,750,000.00				1,928,617.90
Total From All Sources	\$1,760,076.19				\$112,975,975.23

LEA : 113365203 Penn Manor SD

Printed 12/12/2025 12:28:05 PM

General Fund (10)

1000 Instruction		Total
100 <u>Personnel Services – Salaries</u>		
110	Official / Administrative Salaries	192,632.52
120	Professional – Educational	28,741,277.40
150	Office / Clerical	158,029.58
190	Instructional Assistant	990,284.92
Total Personnel Services – Salaries		\$30,082,224.42
200 <u>Personnel Services – Employee Benefits</u>		
210	Group Insurance – Contracted Provider	59,465.45
220	Social Security Contributions	2,253,957.69
230	PSERS Retirement Contributions	10,480,035.50
250	Unemployment Compensation	26,095.38
260	Workers' Compensation	240,323.96
270	Group Insurance – Self-Insurance	5,437,649.88
291	Other Retirement Plans	113,044.15
Total Personnel Services – Employee Benefits		\$18,610,572.01
300 <u>Purchased Professional and Technical Services</u>		
322	Professional Educational Services – Ius	8,590,359.59
323	Professional Educational Services – Other Educational Agencies	6,825.79
329	Professional Educational Services – Other	2,531,445.61
330	Other Professional Services	464,964.11
390	Other Purchased Professional and Technical Services	2,020.14
Total Purchased Professional and Technical Services		\$11,595,615.24
400 <u>Purchased Property Services</u>		
430	Repairs and Maintenance Services	95.55
440	Rentals	197,680.44
Total Purchased Property Services		\$197,775.99
500 <u>Other Purchased Services</u>		
510	Student Transportation Services	23,238.89
561	Tuition To Other School Districts Within the State	581,292.79
562	Tuition To Pennsylvania Charter Schools	2,417,799.55
563	Tuition To Nonpublic Schools	1,007,869.21
564	Tuition To Career and Technology Centers	2,217,252.59
566	Tuition To Institutions of Higher Education and Technical Institutes	4,477.40
567	Tuition To Approved Private Schools (APS) and PA Chartered Schools for the Deaf and Blind	108,995.98
568	Tuition To Private Residential Rehabilitative Institutions (PRRI) [In-State] and Detention Centers	149,203.05
569	Tuition – Other	73,430.00
580	Travel	11,177.01
594	IU Payment By Withholding for Institutionalized Children's Programs – Special Classes	1,010.60
Total Other Purchased Services		\$6,595,747.07
600 <u>Supplies</u>		
610	General Supplies	581,831.61
630	Food	360.76
640	Books and Periodicals	120,354.33
650	Supplies & Fees – Technology Related	802,300.07

LEA : 113365203 Penn Manor SD

Printed 12/12/2025 12:28:05 PM

General Fund (10)

1000 Instruction		<u>Total</u>
Total Supplies		\$1,504,846.77
700 <u>Property</u>		
752 Capital Equipment – Original and Additional		21,115.00
756 Capitalized Technology Equipment – Original		17,200.00
Total Property		\$38,315.00
800 <u>Other Objects</u>		
810 Dues and Fees		8,420.01
Total Other Objects		\$8,420.01
Total 1000 Instruction		\$68,633,516.51

LEA : 113365203 Penn Manor SD

Printed 12/12/2025 12:28:05 PM

General Fund (10)

1100 Regular Programs – Elementary / Secondary	Elementary	Secondary	Federal	Total
100 Personnel Services – Salaries				
110 Official / Administrative Salaries	78,870.42	104,149.60		183,020.02
120 Professional – Educational	11,876,620.64	11,545,285.13	694,147.02	24,116,052.79
190 Instructional Assistant	869,864.72		120,420.20	990,284.92
Total Personnel Services – Salaries	\$12,825,355.78	\$11,649,434.73	\$814,567.22	\$25,289,357.73
200 Personnel Services – Employee Benefits				
210 Group Insurance – Contracted Provider	18,284.52	8,215.95		26,500.47
220 Social Security Contributions	994,762.42	846,589.01	31,162.21	1,872,513.64
230 PSERS Retirement Contributions	4,611,819.68	4,016,944.79	139,777.27	8,768,541.74
250 Unemployment Compensation	13,416.32	12,679.06		26,095.38
260 Workers' Compensation	107,194.99	94,999.00		202,193.99
270 Group Insurance – Self-Insurance	2,867,850.05	1,630,454.04		4,498,304.09
291 Other Retirement Plans	113,044.15			113,044.15
Total Personnel Services – Employee Benefits	\$8,726,372.13	\$6,609,881.85	\$170,939.48	\$15,507,193.46
300 Purchased Professional and Technical Services				
329 Professional Educational Services – Other	420,811.38	506,624.52		927,435.90
330 Other Professional Services	10,071.78	56,773.93	57,465.00	124,310.71
390 Other Purchased Professional and Technical Services	1,665.00	355.14		2,020.14
Total Purchased Professional and Technical Services	\$432,548.16	\$563,753.59	\$57,465.00	\$1,053,766.75
400 Purchased Property Services				
430 Repairs and Maintenance Services		95.55		95.55
440 Rentals	67,556.68	130,123.76		197,680.44
Total Purchased Property Services	\$67,556.68	\$130,219.31		\$197,775.99
500 Other Purchased Services				
510 Student Transportation Services	2,909.53	18,266.10		21,175.63
561 Tuition To Other School Districts Within the State	101,551.95	96,949.35		198,501.30
562 Tuition To Pennsylvania Charter Schools	397,060.71	834,550.97		1,231,611.68
569 Tuition – Other		73,430.00		73,430.00
580 Travel	2,304.95	3,019.21		5,324.16
Total Other Purchased Services	\$503,827.14	\$1,026,215.63		\$1,530,042.77
600 Supplies				
610 General Supplies	229,787.81	284,975.76	14,810.43	529,574.00
630 Food		360.76		360.76
640 Books and Periodicals	99,724.65	17,428.18		117,152.83
650 Supplies & Fees – Technology Related	447,320.82	337,990.15		785,310.97
Total Supplies	\$776,833.28	\$640,754.85	\$14,810.43	\$1,432,398.56
700 Property				
756 Capitalized Technology Equipment – Original		17,200.00		17,200.00
Total Property		\$17,200.00		\$17,200.00
800 Other Objects				
810 Dues and Fees		7,871.00		7,871.00

LEA : 113365203 Penn Manor SD

Printed 12/12/2025 12:28:05 PM

General Fund (10)

1100 Regular Programs – Elementary / Secondary

	<u>Elementary</u>	<u>Secondary</u>	<u>Federal</u>	<u>Total</u>
Total Other Objects		\$7,871.00		\$7,871.00
Total 1100 Regular Programs – Elementary / Secondary	\$23,332,493.17	\$20,645,330.96	\$1,057,782.13	\$45,035,606.26

LEA : 113365203 Penn Manor SD

Printed 12/12/2025 12:28:05 PM

General Fund (10)

1110 Regular Programs

	<u>Elementary</u>	<u>Secondary</u>	<u>Federal</u>	<u>Total</u>
100 <u>Personnel Services – Salaries</u>				
110 Official / Administrative Salaries	78,870.42	104,149.60		183,020.02
120 Professional – Educational	11,876,620.64	11,545,285.13		23,421,905.77
190 Instructional Assistant	869,864.72			869,864.72
Total Personnel Services – Salaries	\$12,825,355.78	\$11,649,434.73		\$24,474,790.51
200 <u>Personnel Services – Employee Benefits</u>				
210 Group Insurance – Contracted Provider	18,284.52	8,215.95		26,500.47
220 Social Security Contributions	994,762.42	846,589.01		1,841,351.43
230 PSERS Retirement Contributions	4,611,819.68	4,016,944.79		8,628,764.47
250 Unemployment Compensation	13,416.32	12,679.06		26,095.38
260 Workers' Compensation	107,194.99	94,999.00		202,193.99
270 Group Insurance – Self-Insurance	2,867,850.05	1,630,454.04		4,498,304.09
291 Other Retirement Plans	113,044.15			113,044.15
Total Personnel Services – Employee Benefits	\$8,726,372.13	\$6,609,881.85		\$15,336,253.98
300 <u>Purchased Professional and Technical Services</u>				
329 Professional Educational Services – Other	420,811.38	506,624.52		927,435.90
330 Other Professional Services	10,071.78	56,773.93		66,845.71
390 Other Purchased Professional and Technical Services	1,665.00	355.14		2,020.14
Total Purchased Professional and Technical Services	\$432,548.16	\$563,753.59		\$996,301.75
400 <u>Purchased Property Services</u>				
430 Repairs and Maintenance Services		95.55		95.55
440 Rentals	67,556.68	130,123.76		197,680.44
Total Purchased Property Services	\$67,556.68	\$130,219.31		\$197,775.99
500 <u>Other Purchased Services</u>				
510 Student Transportation Services	2,909.53	18,266.10		21,175.63
561 Tuition To Other School Districts Within the State	101,551.95	96,949.35		198,501.30
562 Tuition To Pennsylvania Charter Schools	397,060.71	834,550.97		1,231,611.68
569 Tuition – Other		73,430.00		73,430.00
580 Travel	2,304.95	3,019.21		5,324.16
Total Other Purchased Services	\$503,827.14	\$1,026,215.63		\$1,530,042.77
600 <u>Supplies</u>				
610 General Supplies	229,787.81	284,975.76		514,763.57
630 Food		360.76		360.76
640 Books and Periodicals	99,724.65	17,428.18		117,152.83
650 Supplies & Fees – Technology Related	447,320.82	337,990.15		785,310.97
Total Supplies	\$776,833.28	\$640,754.85		\$1,417,588.13
700 <u>Property</u>				
756 Capitalized Technology Equipment – Original		17,200.00		17,200.00
Total Property		\$17,200.00		\$17,200.00
800 <u>Other Objects</u>				
810 Dues and Fees		7,871.00		7,871.00

LEA : 113365203 Penn Manor SD

Printed 12/12/2025 12:28:05 PM

General Fund (10)

1110 Regular Programs

	<u>Elementary</u>	<u>Secondary</u>	<u>Federal</u>	<u>Total</u>
Total Other Objects		\$7,871.00		\$7,871.00
Total 1110 Regular Programs	\$23,332,493.17	\$20,645,330.96		\$43,977,824.13

LEA : 113365203 Penn Manor SD

Printed 12/12/2025 12:28:05 PM

General Fund (10)

1190 Federally-Funded Regular Programs	<u>Elementary</u>	<u>Secondary</u>	<u>Federal</u>	<u>Total</u>
100 <u>Personnel Services – Salaries</u>				
120 Professional – Educational			694,147.02	694,147.02
190 Instructional Assistant			120,420.20	120,420.20
Total Personnel Services – Salaries			\$814,567.22	\$814,567.22
200 <u>Personnel Services – Employee Benefits</u>				
220 Social Security Contributions			31,162.21	31,162.21
230 PSERS Retirement Contributions			139,777.27	139,777.27
Total Personnel Services – Employee Benefits			\$170,939.48	\$170,939.48
300 <u>Purchased Professional and Technical Services</u>				
330 Other Professional Services			57,465.00	57,465.00
Total Purchased Professional and Technical Services			\$57,465.00	\$57,465.00
600 <u>Supplies</u>				
610 General Supplies			14,810.43	14,810.43
Total Supplies			\$14,810.43	\$14,810.43
Total 1190 Federally-Funded Regular Programs			\$1,057,782.13	\$1,057,782.13

LEA : 113365203 Penn Manor SD

Printed 12/12/2025 12:28:05 PM

General Fund (10)

1200 Special Programs – Elementary / Secondary

	<u>Elementary</u>	<u>Secondary</u>	<u>Federal</u>	<u>Total</u>
100 <u>Personnel Services – Salaries</u>				
110 Official / Administrative Salaries		9,612.50		9,612.50
120 Professional – Educational	1,831,327.88	2,205,075.94		4,036,403.82
150 Office / Clerical	81,247.17	76,782.41		158,029.58
Total Personnel Services – Salaries	\$1,912,575.05	\$2,291,470.85		\$4,204,045.90
200 <u>Personnel Services – Employee Benefits</u>				
210 Group Insurance – Contracted Provider	4,651.87	4,965.69		9,617.56
220 Social Security Contributions	155,435.45	181,883.43		337,318.88
230 PSERS Retirement Contributions	706,507.48	830,301.61		1,536,809.09
260 Workers' Compensation	15,641.42	19,137.55		34,778.97
270 Group Insurance – Self-Insurance	351,723.07	561,217.91		912,940.98
Total Personnel Services – Employee Benefits	\$1,233,959.29	\$1,597,506.19		\$2,831,465.48
300 <u>Purchased Professional and Technical Services</u>				
322 Professional Educational Services – Ius	3,598,449.46	3,831,879.70	1,149,663.00	8,579,992.16
323 Professional Educational Services – Other Educational Agencies		6,825.79		6,825.79
329 Professional Educational Services – Other	870,027.28	733,982.43		1,604,009.71
330 Other Professional Services	195,506.96	145,146.44		340,653.40
Total Purchased Professional and Technical Services	\$4,663,983.70	\$4,717,834.36	\$1,149,663.00	\$10,531,481.06
500 <u>Other Purchased Services</u>				
510 Student Transportation Services	1,252.93	343.55		1,596.48
561 Tuition To Other School Districts Within the State	78,166.81	292,262.29		370,429.10
562 Tuition To Pennsylvania Charter Schools	288,615.92	897,571.95		1,186,187.87
563 Tuition To Nonpublic Schools		1,007,869.21		1,007,869.21
567 Tuition To Approved Private Schools (APS) and PA Chartered Schools for the Deaf and Blind		108,995.98		108,995.98
568 Tuition To Private Residential Rehabilitative Institutions (PRRI) [In-State] and Detention Centers		130,433.87		130,433.87
580 Travel	3,148.43	2,704.42		5,852.85
594 IU Payment By Withholding for Institutionalized Children's Programs – Special Classes		1,010.60		1,010.60
Total Other Purchased Services	\$371,184.09	\$2,441,191.87		\$2,812,375.96
600 <u>Supplies</u>				
610 General Supplies	31,368.70	8,863.41		40,232.11
640 Books and Periodicals	1,898.79	1,302.71		3,201.50
650 Supplies & Fees – Technology Related	3,216.30	13,772.80		16,989.10
Total Supplies	\$36,483.79	\$23,938.92		\$60,422.71
800 <u>Other Objects</u>				
810 Dues and Fees	149.00	400.01		549.01
Total Other Objects	\$149.00	\$400.01		\$549.01
Total 1200 Special Programs – Elementary / Secondary	\$8,218,334.92	\$11,072,342.20	\$1,149,663.00	\$20,440,340.12

LEA : 113365203 Penn Manor SD

Printed 12/12/2025 12:28:05 PM

General Fund (10)

1210 Life Skills Support

	<u>Elementary</u>	<u>Secondary</u>	<u>Federal</u>	<u>Total</u>
100 <u>Personnel Services – Salaries</u>				
110 Official / Administrative Salaries		9,612.50		9,612.50
120 Professional – Educational	1,219,539.38	1,850,201.98		3,069,741.36
150 Office / Clerical	81,247.17	76,782.41		158,029.58
Total Personnel Services – Salaries	\$1,300,786.55	\$1,936,596.89		\$3,237,383.44
200 <u>Personnel Services – Employee Benefits</u>				
210 Group Insurance – Contracted Provider	4,651.87	4,965.69		9,617.56
220 Social Security Contributions	109,957.68	155,892.18		265,849.86
230 PSERS Retirement Contributions	499,619.64	710,038.03		1,209,657.67
260 Workers' Compensation	10,210.43	16,364.56		26,574.99
270 Group Insurance – Self-Insurance	351,580.08	560,917.92		912,498.00
Total Personnel Services – Employee Benefits	\$976,019.70	\$1,448,178.38		\$2,424,198.08
300 <u>Purchased Professional and Technical Services</u>				
323 Professional Educational Services – Other Educational Agencies		6,825.79		6,825.79
329 Professional Educational Services – Other	870,027.28	733,982.43		1,604,009.71
330 Other Professional Services	46,142.46	3,989.95		50,132.41
Total Purchased Professional and Technical Services	\$916,169.74	\$744,798.17		\$1,660,967.91
500 <u>Other Purchased Services</u>				
510 Student Transportation Services		173.55		173.55
562 Tuition To Pennsylvania Charter Schools	288,615.92	897,571.95		1,186,187.87
563 Tuition To Nonpublic Schools		1,007,869.21		1,007,869.21
580 Travel	2,745.68	2,392.30		5,137.98
Total Other Purchased Services	\$291,361.60	\$1,908,007.01		\$2,199,368.61
600 <u>Supplies</u>				
610 General Supplies	15,925.82	7,532.36		23,458.18
640 Books and Periodicals	1,898.79	1,302.71		3,201.50
650 Supplies & Fees – Technology Related	3,216.30	13,772.80		16,989.10
Total Supplies	\$21,040.91	\$22,607.87		\$43,648.78
800 <u>Other Objects</u>				
810 Dues and Fees		400.01		400.01
Total Other Objects		\$400.01		\$400.01
Total 1210 Life Skills Support	\$3,505,378.50	\$6,060,588.33		\$9,565,966.83

LEA : 113365203 Penn Manor SD

Printed 12/12/2025 12:28:05 PM

General Fund (10)

1220 Sensory Support	Elementary	Secondary	Federal	Total
100 <u>Personnel Services – Salaries</u>				
120 Professional – Educational	440,675.79	78.75		440,754.54
Total Personnel Services – Salaries	\$440,675.79	\$78.75		\$440,754.54
200 <u>Personnel Services – Employee Benefits</u>				
220 Social Security Contributions	32,854.59	5.96		32,860.55
230 PSERS Retirement Contributions	148,920.50	26.70		148,947.20
260 Workers’ Compensation	3,927.99			3,927.99
Total Personnel Services – Employee Benefits	\$185,703.08	\$32.66		\$185,735.74
500 <u>Other Purchased Services</u>				
580 Travel	65.52	312.12		377.64
Total Other Purchased Services	\$65.52	\$312.12		\$377.64
600 <u>Supplies</u>				
610 General Supplies	4,151.96	893.76		5,045.72
Total Supplies	\$4,151.96	\$893.76		\$5,045.72
Total 1220 Sensory Support	\$630,596.35	\$1,317.29		\$631,913.64

LEA : 113365203 Penn Manor SD

Printed 12/12/2025 12:28:05 PM

General Fund (10)				
1240 Academic Support	<u>Elementary</u>	<u>Secondary</u>	<u>Federal</u>	<u>Total</u>
100 <u>Personnel Services – Salaries</u>				
120 Professional – Educational	171,112.71	354,795.21		525,907.92
Total Personnel Services – Salaries	\$171,112.71	\$354,795.21		\$525,907.92
200 <u>Personnel Services – Employee Benefits</u>				
220 Social Security Contributions	12,623.18	25,985.29		38,608.47
230 PSERS Retirement Contributions	57,967.34	120,236.88		178,204.22
260 Workers’ Compensation	1,503.00	2,772.99		4,275.99
270 Group Insurance – Self-Insurance	142.99	299.99		442.98
Total Personnel Services – Employee Benefits	\$72,236.51	\$149,295.15		\$221,531.66
500 <u>Other Purchased Services</u>				
510 Student Transportation Services	1,252.93	170.00		1,422.93
580 Travel	337.23			337.23
Total Other Purchased Services	\$1,590.16	\$170.00		\$1,760.16
600 <u>Supplies</u>				
610 General Supplies	11,290.92	437.29		11,728.21
Total Supplies	\$11,290.92	\$437.29		\$11,728.21
800 <u>Other Objects</u>				
810 Dues and Fees	149.00			149.00
Total Other Objects	\$149.00			\$149.00
Total 1240 Academic Support	\$256,379.30	\$504,697.65		\$761,076.95

LEA : 113365203 Penn Manor SD

Printed 12/12/2025 12:28:05 PM

General Fund (10)

1243 Gifted Support

	<u>Elementary</u>	<u>Secondary</u>	<u>Federal</u>	<u>Total</u>
100 <u>Personnel Services – Salaries</u>				
120 Professional – Educational	171,112.71	354,795.21		525,907.92
Total Personnel Services – Salaries	\$171,112.71	\$354,795.21		\$525,907.92
200 <u>Personnel Services – Employee Benefits</u>				
220 Social Security Contributions	12,623.18	25,985.29		38,608.47
230 PSERS Retirement Contributions	57,967.34	120,236.88		178,204.22
260 Workers’ Compensation	1,503.00	2,772.99		4,275.99
270 Group Insurance – Self-Insurance	142.99	299.99		442.98
Total Personnel Services – Employee Benefits	\$72,236.51	\$149,295.15		\$221,531.66
500 <u>Other Purchased Services</u>				
510 Student Transportation Services	1,252.93	170.00		1,422.93
580 Travel	337.23			337.23
Total Other Purchased Services	\$1,590.16	\$170.00		\$1,760.16
600 <u>Supplies</u>				
610 General Supplies	11,290.92	437.29		11,728.21
Total Supplies	\$11,290.92	\$437.29		\$11,728.21
800 <u>Other Objects</u>				
810 Dues and Fees	149.00			149.00
Total Other Objects	\$149.00			\$149.00
Total 1243 Gifted Support	\$256,379.30	\$504,697.65		\$761,076.95

LEA : 113365203 Penn Manor SD

Printed 12/12/2025 12:28:05 PM

General Fund (10)

1290 Special Programs - Other Support	<u>Elementary</u>	<u>Secondary</u>	<u>Federal</u>	<u>Total</u>
300 <u>Purchased Professional and Technical Services</u>				
322 Professional Educational Services – Ius	3,598,449.46	3,831,879.70	1,149,663.00	8,579,992.16
330 Other Professional Services	149,364.50	141,156.49		290,520.99
Total Purchased Professional and Technical Services	\$3,747,813.96	\$3,973,036.19	\$1,149,663.00	\$8,870,513.15
500 <u>Other Purchased Services</u>				
561 Tuition To Other School Districts Within the State	78,166.81	292,262.29		370,429.10
567 Tuition To Approved Private Schools (APS) and PA Chartered Schools for the Deaf and Blind		108,995.98		108,995.98
568 Tuition To Private Residential Rehabilitative Institutions (PRRI) [In-State] and Detention Centers		130,433.87		130,433.87
594 IU Payment By Withholding for Institutionalized Children’s Programs – Special Classes		1,010.60		1,010.60
Total Other Purchased Services	\$78,166.81	\$532,702.74		\$610,869.55
Total 1290 Special Programs - Other Support	\$3,825,980.77	\$4,505,738.93	\$1,149,663.00	\$9,481,382.70

LEA : 113365203 Penn Manor SD

Printed 12/12/2025 12:28:05 PM

General Fund (10)

1300 Vocational Education

	<u>Elementary</u>	<u>Secondary</u>	<u>Federal</u>	<u>Total</u>
100 <u>Personnel Services – Salaries</u>				
120 Professional – Educational		434,796.60		434,796.60
Total Personnel Services – Salaries		\$434,796.60		\$434,796.60
200 <u>Personnel Services – Employee Benefits</u>				
210 Group Insurance – Contracted Provider		23,347.42		23,347.42
220 Social Security Contributions		32,635.60		32,635.60
230 PSERS Retirement Contributions		122,411.91		122,411.91
260 Workers' Compensation		2,773.00		2,773.00
270 Group Insurance – Self-Insurance		26,404.81		26,404.81
Total Personnel Services – Employee Benefits		\$207,572.74		\$207,572.74
500 <u>Other Purchased Services</u>				
510 Student Transportation Services		466.78		466.78
564 Tuition To Career and Technology Centers		2,217,252.59		2,217,252.59
Total Other Purchased Services		\$2,217,719.37		\$2,217,719.37
600 <u>Supplies</u>				
610 General Supplies		12,025.50		12,025.50
Total Supplies		\$12,025.50		\$12,025.50
700 <u>Property</u>				
752 Capital Equipment – Original and Additional		21,115.00		21,115.00
Total Property		\$21,115.00		\$21,115.00
Total 1300 Vocational Education		\$2,893,229.21		\$2,893,229.21

LEA : 113365203 Penn Manor SD

Printed 12/12/2025 12:28:05 PM

General Fund (10)

1400 Other Instructional Programs – Elementary / Secondary	<u>Elementary</u>	<u>Secondary</u>	<u>Federal</u>	<u>Total</u>
100 <u>Personnel Services – Salaries</u>				
120 Professional – Educational	20,399.15	133,625.04		154,024.19
Total Personnel Services – Salaries	\$20,399.15	\$133,625.04		\$154,024.19
200 <u>Personnel Services – Employee Benefits</u>				
220 Social Security Contributions	1,536.03	9,953.54		11,489.57
230 PSERS Retirement Contributions	6,913.41	45,359.35		52,272.76
260 Workers’ Compensation		578.00		578.00
Total Personnel Services – Employee Benefits	\$8,449.44	\$55,890.89		\$64,340.33
500 <u>Other Purchased Services</u>				
561 Tuition To Other School Districts Within the State		12,362.39		12,362.39
566 Tuition To Institutions of Higher Education and Technical Institutes		4,477.40		4,477.40
568 Tuition To Private Residential Rehabilitative Institutions (PRRI) [In-State] and Detention Centers	2,565.00	16,204.18		18,769.18
Total Other Purchased Services	\$2,565.00	\$33,043.97		\$35,608.97
Total 1400 Other Instructional Programs – Elementary / Secondary	\$31,413.59	\$222,559.90		\$253,973.49

LEA : 113365203 Penn Manor SD

Printed 12/12/2025 12:28:05 PM

General Fund (10)

1420 Summer School	<u>Elementary</u>	<u>Secondary</u>	<u>Federal</u>	<u>Total</u>
100 <u>Personnel Services – Salaries</u>				
120 Professional – Educational	490.01	22,970.27		23,460.28
Total Personnel Services – Salaries	\$490.01	\$22,970.27		\$23,460.28
200 <u>Personnel Services – Employee Benefits</u>				
220 Social Security Contributions	36.26	1,727.61		1,763.87
230 PSERS Retirement Contributions	166.12	7,775.86		7,941.98
Total Personnel Services – Employee Benefits	\$202.38	\$9,503.47		\$9,705.85
Total 1420 Summer School	\$692.39	\$32,473.74		\$33,166.13

LEA : 113365203 Penn Manor SD

Printed 12/12/2025 12:28:05 PM

General Fund (10)

1430 Homebound Instruction	<u>Elementary</u>	<u>Secondary</u>	<u>Federal</u>	<u>Total</u>
100 <u>Personnel Services – Salaries</u>				
120 Professional – Educational	174.99	803.25		978.24
Total Personnel Services – Salaries	\$174.99	\$803.25		\$978.24
200 <u>Personnel Services – Employee Benefits</u>				
220 Social Security Contributions	13.39	60.65		74.04
230 PSERS Retirement Contributions	59.50	272.29		331.79
Total Personnel Services – Employee Benefits	\$72.89	\$332.94		\$405.83
500 <u>Other Purchased Services</u>				
568 Tuition To Private Residential Rehabilitative Institutions (PRRI) [In-State] and Detention Centers	2,565.00	16,204.18		18,769.18
Total Other Purchased Services	\$2,565.00	\$16,204.18		\$18,769.18
Total 1430 Homebound Instruction	\$2,812.88	\$17,340.37		\$20,153.25

LEA : 113365203 Penn Manor SD

Printed 12/12/2025 12:28:05 PM

General Fund (10)

1440 Alternative Regular Education Programs	<u>Elementary</u>	<u>Secondary</u>	<u>Federal</u>	<u>Total</u>
100 <u>Personnel Services – Salaries</u>				
120 Professional – Educational		47,587.55		47,587.55
Total Personnel Services – Salaries		\$47,587.55		\$47,587.55
200 <u>Personnel Services – Employee Benefits</u>				
220 Social Security Contributions		3,518.27		3,518.27
230 PSERS Retirement Contributions		16,113.74		16,113.74
260 Workers’ Compensation		578.00		578.00
Total Personnel Services – Employee Benefits		\$20,210.01		\$20,210.01
500 <u>Other Purchased Services</u>				
561 Tuition To Other School Districts Within the State		12,362.39		12,362.39
Total Other Purchased Services		\$12,362.39		\$12,362.39
Total 1440 Alternative Regular Education Programs		\$80,159.95		\$80,159.95

LEA : 113365203 Penn Manor SD

Printed 12/12/2025 12:28:05 PM

General Fund (10)

1441 Adjudicated / Court-Placed Programs	<u>Elementary</u>	<u>Secondary</u>	<u>Federal</u>	<u>Total</u>
500 <u>Other Purchased Services</u>				
561 Tuition To Other School Districts Within the State		12,362.39		12,362.39
Total Other Purchased Services		\$12,362.39		\$12,362.39
Total 1441 Adjudicated / Court-Placed Programs		\$12,362.39		\$12,362.39

LEA : 113365203 Penn Manor SD

Printed 12/12/2025 12:28:05 PM

General Fund (10)

1442 Alternative Education Programs	<u>Elementary</u>	<u>Secondary</u>	<u>Federal</u>	<u>Total</u>
100 <u>Personnel Services – Salaries</u>				
120 Professional – Educational		47,587.55		47,587.55
Total Personnel Services – Salaries		\$47,587.55		\$47,587.55
200 <u>Personnel Services – Employee Benefits</u>				
220 Social Security Contributions		3,518.27		3,518.27
230 PSERS Retirement Contributions		16,113.74		16,113.74
260 Workers’ Compensation		578.00		578.00
Total Personnel Services – Employee Benefits		\$20,210.01		\$20,210.01
Total 1442 Alternative Education Programs		\$67,797.56		\$67,797.56

LEA : 113365203 Penn Manor SD

Printed 12/12/2025 12:28:05 PM

General Fund (10)

1450 Instructional Programs Outside the Established School Day	<u>Elementary</u>	<u>Secondary</u>	<u>Federal</u>	<u>Total</u>
100 <u>Personnel Services – Salaries</u>				
120 Professional – Educational	19,734.15	62,263.97		81,998.12
Total Personnel Services – Salaries	\$19,734.15	\$62,263.97		\$81,998.12
200 <u>Personnel Services – Employee Benefits</u>				
220 Social Security Contributions	1,486.38	4,647.01		6,133.39
230 PSERS Retirement Contributions	6,687.79	21,197.46		27,885.25
Total Personnel Services – Employee Benefits	\$8,174.17	\$25,844.47		\$34,018.64
Total 1450 Instructional Programs Outside the Established School Day	\$27,908.32	\$88,108.44		\$116,016.76

LEA : 113365203 Penn Manor SD

Printed 12/12/2025 12:28:05 PM

General Fund (10)

1490 Additional Other Instructional Programs	<u>Elementary</u>	<u>Secondary</u>	<u>Federal</u>	<u>Total</u>
500 <u>Other Purchased Services</u>				
566 Tuition To Institutions of Higher Education and Technical Institutes		4,477.40		4,477.40
Total Other Purchased Services		\$4,477.40		\$4,477.40
Total 1490 Additional Other Instructional Programs		\$4,477.40		\$4,477.40

LEA : 113365203 Penn Manor SD

Printed 12/12/2025 12:28:05 PM

General Fund (10)

1500 Nonpublic School Programs	<u>Elementary</u>	<u>Secondary</u>	<u>Federal</u>	<u>Total</u>
300 <u>Purchased Professional and Technical Services</u>				
322 Professional Educational Services – lus			10,367.43	10,367.43
Total Purchased Professional and Technical Services			\$10,367.43	\$10,367.43
Total 1500 Nonpublic School Programs			\$10,367.43	\$10,367.43

LEA : 113365203 Penn Manor SD

Printed 12/12/2025 12:28:16 PM

General Fund (10)

2000 Support Services

Total

100	<u>Personnel Services – Salaries</u>	
100	Personnel Services – Salaries	11,692,439.86
Total Personnel Services – Salaries		\$11,692,439.86
200	<u>Personnel Services – Employee Benefits</u>	
210	Group Insurance – Contracted Provider	28,924.20
220	Social Security Contributions	847,423.25
230	PSERS Retirement Contributions	3,738,788.50
240	Tuition Reimbursement	697,338.76
260	Workers' Compensation	83,890.02
270	Group Insurance – Self-Insurance	2,706,625.20
Total Personnel Services – Employee Benefits		\$8,102,989.93
300	<u>Purchased Professional and Technical Services</u>	
329	Professional Educational Services – Other	90,715.00
330	Other Professional Services	233,120.05
340	Technical Services	234,418.68
350	Security / Safety Services	232,898.88
360	Employee Training and Development Services	341,885.17
Total Purchased Professional and Technical Services		\$1,133,037.78
400	<u>Purchased Property Services</u>	
410	Cleaning Services	87,962.22
420	Utility Services	269,214.97
430	Repairs and Maintenance Services	1,222,196.86
440	Rentals	7,647.09
490	Other Purchased Property Services	1,913.59
Total Purchased Property Services		\$1,588,934.73
500	<u>Other Purchased Services</u>	
510	Student Transportation Services	2,417.00
513	Contracted Carriers	5,202,937.35
516	Student Transportation Services From the IU	70,940.58
520	Insurance – General	300.00
523	General Property and Liability Insurance	483,012.00
530	Communications	111,065.99
549	Other Advertising/Public Relations	2,382.58
550	Printing and Binding	17,210.80
580	Travel	14,626.51
591	Services Purchased Locally	33,780.47
595	IU Payments By Withholding	40,213.04
596	Direct Payments To Intermediate Units	2,700.00
Total Other Purchased Services		\$5,981,586.32
600	<u>Supplies</u>	
610	General Supplies	753,577.41
620	Energy	1,224,080.40
630	Food	26,549.64
640	Books and Periodicals	15,668.49

LEA : 113365203 Penn Manor SD

Printed 12/12/2025 12:28:16 PM

General Fund (10)

2000 Support Services

Total

600 <u>Supplies</u>	
650 Supplies & Fees – Technology Related	87,314.43
Total Supplies	\$2,107,190.37
700 <u>Property</u>	
752 Capital Equipment – Original and Additional	88,584.33
Total Property	\$88,584.33
800 <u>Other Objects</u>	
810 Dues and Fees	30,633.54
890 Miscellaneous Expenditures	4,500.00
Total Other Objects	\$35,133.54
Total 2000 Support Services	\$30,729,896.86

LEA : 113365203 Penn Manor SD

Printed 12/12/2025 12:28:16 PM

General Fund (10)

2100 Support Services – Students	Elementary	Secondary	Federal	Total
100 <u>Personnel Services – Salaries</u>				
100 Personnel Services – Salaries	1,010,516.11	1,095,734.29		2,136,306.59
Total Personnel Services – Salaries	\$1,010,516.11	\$1,095,734.29		\$2,136,306.59
200 <u>Personnel Services – Employee Benefits</u>				
210 Group Insurance – Contracted Provider	1,583.26	5,588.24		7,171.50
220 Social Security Contributions	75,616.61	81,390.34		159,234.29
230 PSERS Retirement Contributions	347,869.14	370,754.64		728,810.70
260 Workers' Compensation	5,275.46	9,052.54		14,676.00
270 Group Insurance – Self-Insurance	301,358.64	143,103.38		692,671.80
Total Personnel Services – Employee Benefits	\$731,703.11	\$609,889.14		\$1,602,564.29
300 <u>Purchased Professional and Technical Services</u>				
330 Other Professional Services	48,458.95	45,796.00		94,254.95
Total Purchased Professional and Technical Services	\$48,458.95	\$45,796.00		\$94,254.95
500 <u>Other Purchased Services</u>				
510 Student Transportation Services		2,417.00		2,417.00
580 Travel	601.58	1,130.35		1,731.93
Total Other Purchased Services	\$601.58	\$3,547.35		\$4,148.93
600 <u>Supplies</u>				
610 General Supplies	2,809.52	5,236.01		8,045.53
640 Books and Periodicals	211.66	7.94		219.60
Total Supplies	\$3,021.18	\$5,243.95		\$8,265.13
800 <u>Other Objects</u>				
810 Dues and Fees		224.00		224.00
890 Miscellaneous Expenditures			4,500.00	4,500.00
Total Other Objects		\$224.00	\$4,500.00	\$4,724.00
Total 2100 Support Services – Students	\$1,794,300.93	\$1,760,434.73	\$4,500.00	\$3,850,263.89

LEA : 113365203 Penn Manor SD

Printed 12/12/2025 12:28:16 PM

General Fund (10)

2120 Guidance Services	Elementary	Secondary	Federal	Total
100 <u>Personnel Services – Salaries</u>				
100 Personnel Services – Salaries	795,180.03	909,361.64		1,704,541.67
Total Personnel Services – Salaries	\$795,180.03	\$909,361.64		\$1,704,541.67
200 <u>Personnel Services – Employee Benefits</u>				
210 Group Insurance – Contracted Provider	1,150.29	5,004.97		6,155.26
220 Social Security Contributions	59,550.98	67,450.89		127,001.87
230 PSERS Retirement Contributions	274,908.88	308,014.98		582,923.86
260 Workers' Compensation	3,888.45	6,972.55		10,861.00
270 Group Insurance – Self-Insurance	163,786.47	84,352.71		248,139.18
Total Personnel Services – Employee Benefits	\$503,285.07	\$471,796.10		\$975,081.17
500 <u>Other Purchased Services</u>				
510 Student Transportation Services		2,417.00		2,417.00
580 Travel		34.57		34.57
Total Other Purchased Services		\$2,451.57		\$2,451.57
600 <u>Supplies</u>				
610 General Supplies	1,337.06	2,354.35		3,691.41
640 Books and Periodicals	211.66	7.94		219.60
Total Supplies	\$1,548.72	\$2,362.29		\$3,911.01
800 <u>Other Objects</u>				
810 Dues and Fees		224.00		224.00
890 Miscellaneous Expenditures			4,500.00	4,500.00
Total Other Objects		\$224.00	\$4,500.00	\$4,724.00
Total 2120 Guidance Services	\$1,300,013.82	\$1,386,195.60	\$4,500.00	\$2,690,709.42

LEA : 113365203 Penn Manor SD

Printed 12/12/2025 12:28:16 PM

General Fund (10)

2130 Attendance Services

Elementary Secondary Federal Total

100 Personnel Services – Salaries

100 Personnel Services – Salaries 30,056.19

Total Personnel Services – Salaries \$30,056.19

200 Personnel Services – Employee Benefits

220 Social Security Contributions 2,227.34

230 PSERS Retirement Contributions 10,186.92

260 Workers’ Compensation 348.00

270 Group Insurance – Self-Insurance 248,209.78

Total Personnel Services – Employee Benefits \$260,972.04

Total 2130 Attendance Services \$291,028.23

LEA : 113365203 Penn Manor SD

Printed 12/12/2025 12:28:16 PM

General Fund (10)

2140 Psychological Services	Elementary	Secondary	Federal	Total
100 <u>Personnel Services – Salaries</u>				
100 Personnel Services – Salaries	215,336.08	186,372.65		401,708.73
Total Personnel Services – Salaries	\$215,336.08	\$186,372.65		\$401,708.73
200 <u>Personnel Services – Employee Benefits</u>				
210 Group Insurance – Contracted Provider	432.97	583.27		1,016.24
220 Social Security Contributions	16,065.63	13,939.45		30,005.08
230 PSERS Retirement Contributions	72,960.26	62,739.66		135,699.92
260 Workers' Compensation	1,387.01	2,079.99		3,467.00
270 Group Insurance – Self-Insurance	137,572.17	58,750.67		196,322.84
Total Personnel Services – Employee Benefits	\$228,418.04	\$138,093.04		\$366,511.08
300 <u>Purchased Professional and Technical Services</u>				
330 Other Professional Services	48,458.95	45,796.00		94,254.95
Total Purchased Professional and Technical Services	\$48,458.95	\$45,796.00		\$94,254.95
500 <u>Other Purchased Services</u>				
580 Travel	601.58	1,095.78		1,697.36
Total Other Purchased Services	\$601.58	\$1,095.78		\$1,697.36
600 <u>Supplies</u>				
610 General Supplies	1,472.46	2,881.66		4,354.12
Total Supplies	\$1,472.46	\$2,881.66		\$4,354.12
Total 2140 Psychological Services	\$494,287.11	\$374,239.13		\$868,526.24

LEA : 113365203 Penn Manor SD

Printed 12/12/2025 12:28:16 PM

General Fund (10)

2200 Support Services – Instructional Staff	Elementary	Secondary	Federal	Total
100 <u>Personnel Services – Salaries</u>				
100 Personnel Services – Salaries	411,947.71	337,753.59		749,701.30
Total Personnel Services – Salaries	\$411,947.71	\$337,753.59		\$749,701.30
200 <u>Personnel Services – Employee Benefits</u>				
210 Group Insurance – Contracted Provider	540.02			540.02
220 Social Security Contributions	17,894.26	13,291.05		31,185.31
230 PSERS Retirement Contributions	78,419.03	55,949.84		134,368.87
240 Tuition Reimbursement	378,067.76	282,153.00		660,220.76
260 Workers' Compensation	3,121.00	925.01		4,046.01
270 Group Insurance – Self-Insurance	21,256.33	4,755.00		26,011.33
Total Personnel Services – Employee Benefits	\$499,298.40	\$357,073.90		\$856,372.30
300 <u>Purchased Professional and Technical Services</u>				
329 Professional Educational Services – Other	74,097.78	500.01		74,597.79
360 Employee Training and Development Services	159,014.06	154,831.74		313,845.80
Total Purchased Professional and Technical Services	\$233,111.84	\$155,331.75		\$388,443.59
400 <u>Purchased Property Services</u>				
440 Rentals	1,750.00			1,750.00
Total Purchased Property Services	\$1,750.00			\$1,750.00
600 <u>Supplies</u>				
610 General Supplies	4,736.27	9,432.88	18,567.48	32,736.63
630 Food	561.42	1,807.41		2,368.83
640 Books and Periodicals	9,032.77	5,397.27		14,430.04
650 Supplies & Fees – Technology Related		7,032.79		7,032.79
Total Supplies	\$14,330.46	\$23,670.35	\$18,567.48	\$56,568.29
Total 2200 Support Services – Instructional Staff	\$1,160,438.41	\$873,829.59	\$18,567.48	\$2,052,835.48

LEA : 113365203 Penn Manor SD

Printed 12/12/2025 12:28:16 PM

General Fund (10)

2250 School Library Services	Elementary	Secondary	Federal	Total
100 <u>Personnel Services – Salaries</u>				
100 Personnel Services – Salaries	238,520.48	150,714.06		389,234.54
Total Personnel Services – Salaries	\$238,520.48	\$150,714.06		\$389,234.54
200 <u>Personnel Services – Employee Benefits</u>				
210 Group Insurance – Contracted Provider	540.02			540.02
220 Social Security Contributions	17,852.94	11,513.70		29,366.64
230 PSERS Retirement Contributions	78,229.30	47,926.99		126,156.29
260 Workers' Compensation	3,121.00	925.01		4,046.01
270 Group Insurance – Self-Insurance	21,256.33	4,755.00		26,011.33
Total Personnel Services – Employee Benefits	\$120,999.59	\$65,120.70		\$186,120.29
400 <u>Purchased Property Services</u>				
440 Rentals	1,750.00			1,750.00
Total Purchased Property Services	\$1,750.00			\$1,750.00
600 <u>Supplies</u>				
610 General Supplies	4,122.12	4,294.00		8,416.12
640 Books and Periodicals	9,032.77	5,397.27		14,430.04
650 Supplies & Fees – Technology Related		7,032.79		7,032.79
Total Supplies	\$13,154.89	\$16,724.06		\$29,878.95
Total 2250 School Library Services	\$374,424.96	\$232,558.82		\$606,983.78

LEA : 113365203 Penn Manor SD

Printed 12/12/2025 12:28:16 PM

General Fund (10)

2260 Instruction and Curriculum Development Services	<u>Elementary</u>	<u>Secondary</u>	<u>Federal</u>	<u>Total</u>
100 <u>Personnel Services – Salaries</u>				
100 Personnel Services – Salaries	172,867.21	163,367.63		336,234.84
Total Personnel Services – Salaries	\$172,867.21	\$163,367.63		\$336,234.84
Total 2260 Instruction and Curriculum Development Services	\$172,867.21	\$163,367.63		\$336,234.84

LEA : 113365203 Penn Manor SD

Printed 12/12/2025 12:28:16 PM

General Fund (10)

2270 Instructional Staff Professional Development Services	Elementary	Secondary	Federal	Total
100 <u>Personnel Services – Salaries</u>				
100 Personnel Services – Salaries	560.02	15,627.50		16,187.52
Total Personnel Services – Salaries	\$560.02	\$15,627.50		\$16,187.52
200 <u>Personnel Services – Employee Benefits</u>				
220 Social Security Contributions	41.32	1,178.53		1,219.85
230 PSERS Retirement Contributions	189.73	5,295.62		5,485.35
240 Tuition Reimbursement	378,067.76	282,153.00		660,220.76
Total Personnel Services – Employee Benefits	\$378,298.81	\$288,627.15		\$666,925.96
300 <u>Purchased Professional and Technical Services</u>				
329 Professional Educational Services – Other	74,097.78	500.01		74,597.79
360 Employee Training and Development Services	159,014.06	154,831.74		313,845.80
Total Purchased Professional and Technical Services	\$233,111.84	\$155,331.75		\$388,443.59
600 <u>Supplies</u>				
610 General Supplies	614.15	5,138.88		5,753.03
630 Food	561.42	1,807.41		2,368.83
Total Supplies	\$1,175.57	\$6,946.29		\$8,121.86
Total 2270 Instructional Staff Professional Development Services	\$613,146.24	\$466,532.69		\$1,079,678.93

LEA : 113365203 Penn Manor SD

Printed 12/12/2025 12:28:16 PM

General Fund (10)				
2280 Nonpublic Support Services	<u>Elementary</u>	<u>Secondary</u>	<u>Federal</u>	<u>Total</u>
600 <u>Supplies</u>				
610 General Supplies			18,567.48	18,567.48
Total Supplies			\$18,567.48	\$18,567.48
Total 2280 Nonpublic Support Services			\$18,567.48	\$18,567.48

LEA : 113365203 Penn Manor SD

Printed 12/12/2025 12:28:16 PM

General Fund (10)

2290 Other Instructional Staff Services	<u>Elementary</u>	<u>Secondary</u>	<u>Federal</u>	<u>Total</u>
100 <u>Personnel Services – Salaries</u>				
100 Personnel Services – Salaries		8,044.40		8,044.40
Total Personnel Services – Salaries		\$8,044.40		\$8,044.40
200 <u>Personnel Services – Employee Benefits</u>				
220 Social Security Contributions		598.82		598.82
230 PSERS Retirement Contributions		2,727.23		2,727.23
Total Personnel Services – Employee Benefits		\$3,326.05		\$3,326.05
Total 2290 Other Instructional Staff Services		\$11,370.45		\$11,370.45

LEA : 113365203 Penn Manor SD

Printed 12/12/2025 12:28:16 PM

General Fund (10)

2300 Support Services – Administration	Elementary	Secondary	Federal	Total
100 <u>Personnel Services – Salaries</u>				
100 Personnel Services – Salaries	1,387,870.36	1,186,430.47		3,699,929.87
Total Personnel Services – Salaries	\$1,387,870.36	\$1,186,430.47		\$3,699,929.87
200 <u>Personnel Services – Employee Benefits</u>				
210 Group Insurance – Contracted Provider	4,737.72	1,993.45		8,727.31
220 Social Security Contributions	104,010.87	89,410.62		276,353.20
230 PSERS Retirement Contributions	471,285.94	404,371.65		1,254,472.02
260 Workers' Compensation	10,399.00	10,630.00		29,004.00
270 Group Insurance – Self-Insurance	254,643.82	245,246.10		589,034.56
Total Personnel Services – Employee Benefits	\$845,077.35	\$751,651.82		\$2,157,591.09
300 <u>Purchased Professional and Technical Services</u>				
330 Other Professional Services				75,552.77
340 Technical Services				209,215.13
Total Purchased Professional and Technical Services				\$284,767.90
400 <u>Purchased Property Services</u>				
440 Rentals				5,897.09
Total Purchased Property Services				\$5,897.09
500 <u>Other Purchased Services</u>				
520 Insurance – General				300.00
530 Communications				50,397.62
549 Other Advertising/Public Relations				2,030.09
550 Printing and Binding				16,188.96
580 Travel	442.74			8,771.54
Total Other Purchased Services	\$442.74			\$77,688.21
600 <u>Supplies</u>				
610 General Supplies	422.48	1,131.04		13,786.76
630 Food		1,450.20		24,180.81
640 Books and Periodicals		275.00		1,018.85
Total Supplies	\$422.48	\$2,856.24		\$38,986.42
800 <u>Other Objects</u>				
810 Dues and Fees	604.99			26,001.96
Total Other Objects	\$604.99			\$26,001.96
Total 2300 Support Services – Administration	\$2,234,417.92	\$1,940,938.53		\$6,290,862.54

LEA : 113365203 Penn Manor SD

Printed 12/12/2025 12:28:16 PM

General Fund (10)				
2310 Board Services	<u>Elementary</u>	<u>Secondary</u>	<u>Federal</u>	<u>Total</u>
500 <u>Other Purchased Services</u>				
549 Other Advertising/Public Relations				1,451.55
Total Other Purchased Services				\$1,451.55
600 <u>Supplies</u>				
610 General Supplies				4,526.81
640 Books and Periodicals				229.86
Total Supplies				\$4,756.67
800 <u>Other Objects</u>				
810 Dues and Fees				19,013.97
Total Other Objects				\$19,013.97
Total 2310 Board Services				\$25,222.19

LEA : 113365203 Penn Manor SD

Printed 12/12/2025 12:28:16 PM

General Fund (10)				
2320 Board Treasurer Services	<u>Elementary</u>	<u>Secondary</u>	<u>Federal</u>	<u>Total</u>
500 <u>Other Purchased Services</u>				
520 Insurance – General				99.99
Total Other Purchased Services				\$99.99
Total 2320 Board Treasurer Services				\$99.99

LEA : 113365203 Penn Manor SD

Printed 12/12/2025 12:28:16 PM

General Fund (10)

2330 Tax Assessment and Collection Services	<u>Elementary</u>	<u>Secondary</u>	<u>Federal</u>	<u>Total</u>
300 <u>Purchased Professional and Technical Services</u>				
340 Technical Services				209,215.13
Total Purchased Professional and Technical Services				\$209,215.13
500 <u>Other Purchased Services</u>				
520 Insurance – General				200.01
530 Communications				8,783.01
Total Other Purchased Services				\$8,983.02
Total 2330 Tax Assessment and Collection Services				\$218,198.15

LEA : 113365203 Penn Manor SD

Printed 12/12/2025 12:28:16 PM

General Fund (10)

2350 Legal and Accounting Services	<u>Elementary</u>	<u>Secondary</u>	<u>Federal</u>	<u>Total</u>
300 <u>Purchased Professional and Technical Services</u>				
330 Other Professional Services				71,752.78
Total Purchased Professional and Technical Services				\$71,752.78
Total 2350 Legal and Accounting Services				\$71,752.78

LEA : 113365203 Penn Manor SD

Printed 12/12/2025 12:28:16 PM

General Fund (10)				
2360 Office of the Superintendent / Executive Director Services	<u>Elementary</u>	<u>Secondary</u>	<u>Federal</u>	<u>Total</u>
100 <u>Personnel Services – Salaries</u>				
100 Personnel Services – Salaries				642,046.73
Total Personnel Services – Salaries				\$642,046.73
200 <u>Personnel Services – Employee Benefits</u>				
210 Group Insurance – Contracted Provider				1,842.40
220 Social Security Contributions				46,400.32
230 PSERS Retirement Contributions				214,454.82
260 Workers' Compensation				5,315.00
270 Group Insurance – Self-Insurance				58,501.01
Total Personnel Services – Employee Benefits				\$326,513.55
300 <u>Purchased Professional and Technical Services</u>				
330 Other Professional Services				1,799.99
Total Purchased Professional and Technical Services				\$1,799.99
500 <u>Other Purchased Services</u>				
580 Travel				7,898.74
Total Other Purchased Services				\$7,898.74
600 <u>Supplies</u>				
610 General Supplies				1,810.63
630 Food				21,647.37
Total Supplies				\$23,458.00
800 <u>Other Objects</u>				
810 Dues and Fees				5,532.99
Total Other Objects				\$5,532.99
Total 2360 Office of the Superintendent / Executive Director Services				\$1,007,250.00

LEA : 113365203 Penn Manor SD

Printed 12/12/2025 12:28:16 PM

General Fund (10)				
2370 Community Relations Services				
	<u>Elementary</u>	<u>Secondary</u>	<u>Federal</u>	<u>Total</u>
100 <u>Personnel Services – Salaries</u>				
100 Personnel Services – Salaries				82,417.92
Total Personnel Services – Salaries				\$82,417.92
200 <u>Personnel Services – Employee Benefits</u>				
210 Group Insurance – Contracted Provider				153.74
220 Social Security Contributions				6,167.24
230 PSERS Retirement Contributions				27,939.60
260 Workers' Compensation				578.01
270 Group Insurance – Self-Insurance				29,176.50
Total Personnel Services – Employee Benefits				\$64,015.09
500 <u>Other Purchased Services</u>				
550 Printing and Binding				16,188.96
580 Travel				430.06
Total Other Purchased Services				\$16,619.02
600 <u>Supplies</u>				
610 General Supplies				5,895.80
630 Food				1,083.24
Total Supplies				\$6,979.04
Total 2370 Community Relations Services				\$170,031.07

LEA : 113365203 Penn Manor SD

Printed 12/12/2025 12:28:16 PM

General Fund (10)

2380 Office of the Principal Services	Elementary	Secondary	Federal	Total
100 <u>Personnel Services – Salaries</u>				
100 Personnel Services – Salaries	1,387,870.36	1,186,430.47		2,574,300.83
Total Personnel Services – Salaries	\$1,387,870.36	\$1,186,430.47		\$2,574,300.83
200 <u>Personnel Services – Employee Benefits</u>				
210 Group Insurance – Contracted Provider	4,737.72	1,993.45		6,731.17
220 Social Security Contributions	104,010.87	89,410.62		193,421.49
230 PSERS Retirement Contributions	471,285.94	404,371.65		875,657.59
260 Workers' Compensation	10,399.00	10,630.00		21,029.00
270 Group Insurance – Self-Insurance	254,643.82	245,246.10		499,889.92
Total Personnel Services – Employee Benefits	\$845,077.35	\$751,651.82		\$1,596,729.17
500 <u>Other Purchased Services</u>				
580 Travel	442.74			442.74
Total Other Purchased Services	\$442.74			\$442.74
600 <u>Supplies</u>				
610 General Supplies	422.48	1,131.04		1,553.52
630 Food		1,450.20		1,450.20
640 Books and Periodicals		275.00		275.00
Total Supplies	\$422.48	\$2,856.24		\$3,278.72
800 <u>Other Objects</u>				
810 Dues and Fees	604.99			604.99
Total Other Objects	\$604.99			\$604.99
Total 2380 Office of the Principal Services	\$2,234,417.92	\$1,940,938.53		\$4,175,356.45

LEA : 113365203 Penn Manor SD

Printed 12/12/2025 12:28:16 PM

General Fund (10)

2390 Other Administration Services	<u>Elementary</u>	<u>Secondary</u>	<u>Federal</u>	<u>Total</u>
100 <u>Personnel Services – Salaries</u>				
100 Personnel Services – Salaries				401,164.39
Total Personnel Services – Salaries				\$401,164.39
200 <u>Personnel Services – Employee Benefits</u>				
220 Social Security Contributions				30,364.15
230 PSERS Retirement Contributions				136,420.01
260 Workers’ Compensation				2,081.99
270 Group Insurance – Self-Insurance				1,467.13
Total Personnel Services – Employee Benefits				\$170,333.28
300 <u>Purchased Professional and Technical Services</u>				
330 Other Professional Services				2,000.00
Total Purchased Professional and Technical Services				\$2,000.00
400 <u>Purchased Property Services</u>				
440 Rentals				5,897.09
Total Purchased Property Services				\$5,897.09
500 <u>Other Purchased Services</u>				
530 Communications				41,614.61
549 Other Advertising/Public Relations				578.54
Total Other Purchased Services				\$42,193.15
600 <u>Supplies</u>				
640 Books and Periodicals				513.99
Total Supplies				\$513.99
800 <u>Other Objects</u>				
810 Dues and Fees				850.01
Total Other Objects				\$850.01
Total 2390 Other Administration Services				\$622,951.91

LEA : 113365203 Penn Manor SD

Printed 12/12/2025 12:28:16 PM

General Fund (10)				
2400 Support Services – Pupil Health	<u>Elementary</u>	<u>Secondary</u>	<u>Federal</u>	<u>Total</u>
100 <u>Personnel Services – Salaries</u>				
100 Personnel Services – Salaries				751,176.44
Total Personnel Services – Salaries				\$751,176.44
200 <u>Personnel Services – Employee Benefits</u>				
210 Group Insurance – Contracted Provider				1,463.58
220 Social Security Contributions				56,171.50
230 PSERS Retirement Contributions				207,325.42
260 Workers' Compensation				4,621.01
270 Group Insurance – Self-Insurance				90,866.75
Total Personnel Services – Employee Benefits				\$360,448.26
300 <u>Purchased Professional and Technical Services</u>				
330 Other Professional Services				5,000.01
350 Security / Safety Services				7,476.50
Total Purchased Professional and Technical Services				\$12,476.51
400 <u>Purchased Property Services</u>				
410 Cleaning Services				250.01
Total Purchased Property Services				\$250.01
500 <u>Other Purchased Services</u>				
580 Travel				215.42
Total Other Purchased Services				\$215.42
600 <u>Supplies</u>				
610 General Supplies				22,215.10
Total Supplies				\$22,215.10
Total 2400 Support Services – Pupil Health				\$1,146,781.74

LEA : 113365203 Penn Manor SD

Printed 12/12/2025 12:28:16 PM

General Fund (10)

2420 Medical Services

Elementary Secondary Federal Total

300 <u>Purchased Professional and Technical Services</u>				
330 Other Professional Services				5,000.01
350 Security / Safety Services				7,476.50
Total Purchased Professional and Technical Services				\$12,476.51
400 <u>Purchased Property Services</u>				
410 Cleaning Services				250.01
Total Purchased Property Services				\$250.01
Total 2420 Medical Services				\$12,726.52

LEA : 113365203 Penn Manor SD

Printed 12/12/2025 12:28:16 PM

General Fund (10)

2440 Nursing Services

	<u>Elementary</u>	<u>Secondary</u>	<u>Federal</u>	<u>Total</u>
100 <u>Personnel Services – Salaries</u>				
100 Personnel Services – Salaries				751,176.44
Total Personnel Services – Salaries				\$751,176.44
200 <u>Personnel Services – Employee Benefits</u>				
210 Group Insurance – Contracted Provider				1,463.58
220 Social Security Contributions				56,171.50
230 PSERS Retirement Contributions				207,325.42
260 Workers' Compensation				4,621.01
270 Group Insurance – Self-Insurance				90,866.75
Total Personnel Services – Employee Benefits				\$360,448.26
500 <u>Other Purchased Services</u>				
580 Travel				215.42
Total Other Purchased Services				\$215.42
600 <u>Supplies</u>				
610 General Supplies				22,215.10
Total Supplies				\$22,215.10
Total 2440 Nursing Services				\$1,134,055.22

LEA : 113365203 Penn Manor SD

Printed 12/12/2025 12:28:16 PM

General Fund (10)

	<u>Elementary</u>	<u>Secondary</u>	<u>Federal</u>	<u>Total</u>
2500 Support Services – Business				
100 <u>Personnel Services – Salaries</u>				
100 Personnel Services – Salaries				701,403.74
Total Personnel Services – Salaries				\$701,403.74
200 <u>Personnel Services – Employee Benefits</u>				
210 Group Insurance – Contracted Provider				2,367.15
220 Social Security Contributions				51,631.70
230 PSERS Retirement Contributions				235,156.37
260 Workers' Compensation				5,777.00
270 Group Insurance – Self-Insurance				195,644.91
Total Personnel Services – Employee Benefits				\$490,577.13
300 <u>Purchased Professional and Technical Services</u>				
330 Other Professional Services				34,748.11
Total Purchased Professional and Technical Services				\$34,748.11
400 <u>Purchased Property Services</u>				
430 Repairs and Maintenance Services				159.02
490 Other Purchased Property Services				1,913.59
Total Purchased Property Services				\$2,072.61
500 <u>Other Purchased Services</u>				
550 Printing and Binding				1,021.84
580 Travel				1,018.40
Total Other Purchased Services				\$2,040.24
600 <u>Supplies</u>				
610 General Supplies				3,908.78
Total Supplies				\$3,908.78
800 <u>Other Objects</u>				
810 Dues and Fees				36.74
Total Other Objects				\$36.74
Total 2500 Support Services – Business				\$1,234,787.35

LEA : 113365203 Penn Manor SD

Printed 12/12/2025 12:28:16 PM

General Fund (10)

2510 Fiscal Services

	<u>Elementary</u>	<u>Secondary</u>	<u>Federal</u>	<u>Total</u>
100 <u>Personnel Services – Salaries</u>				
100 Personnel Services – Salaries				701,403.74
Total Personnel Services – Salaries				\$701,403.74
200 <u>Personnel Services – Employee Benefits</u>				
210 Group Insurance – Contracted Provider				2,367.15
220 Social Security Contributions				51,631.70
230 PSERS Retirement Contributions				235,156.37
260 Workers' Compensation				5,777.00
270 Group Insurance – Self-Insurance				195,644.91
Total Personnel Services – Employee Benefits				\$490,577.13
300 <u>Purchased Professional and Technical Services</u>				
330 Other Professional Services				34,748.11
Total Purchased Professional and Technical Services				\$34,748.11
400 <u>Purchased Property Services</u>				
430 Repairs and Maintenance Services				159.02
490 Other Purchased Property Services				1,913.59
Total Purchased Property Services				\$2,072.61
500 <u>Other Purchased Services</u>				
580 Travel				1,018.40
Total Other Purchased Services				\$1,018.40
600 <u>Supplies</u>				
610 General Supplies				3,908.78
Total Supplies				\$3,908.78
800 <u>Other Objects</u>				
810 Dues and Fees				36.74
Total Other Objects				\$36.74
Total 2510 Fiscal Services				\$1,233,765.51

LEA : 113365203 Penn Manor SD

Printed 12/12/2025 12:28:16 PM

General Fund (10)

2511 Supervision of Fiscal Services - Head of Component	<u>Elementary</u>	<u>Secondary</u>	<u>Federal</u>	<u>Total</u>
100 <u>Personnel Services – Salaries</u>				
100 Personnel Services – Salaries				182,279.30
Total Personnel Services – Salaries				\$182,279.30
Total 2511 Supervision of Fiscal Services - Head of Component				\$182,279.30

LEA : 113365203 Penn Manor SD

Printed 12/12/2025 12:28:16 PM

General Fund (10)

2519 Other Fiscal Services	<u>Elementary</u>	<u>Secondary</u>	<u>Federal</u>	<u>Total</u>
100 <u>Personnel Services – Salaries</u>				
100 Personnel Services – Salaries				519,124.44
Total Personnel Services – Salaries				\$519,124.44
200 <u>Personnel Services – Employee Benefits</u>				
210 Group Insurance – Contracted Provider				2,367.15
220 Social Security Contributions				51,631.70
230 PSERS Retirement Contributions				235,156.37
260 Workers' Compensation				5,777.00
270 Group Insurance – Self-Insurance				195,644.91
Total Personnel Services – Employee Benefits				\$490,577.13
300 <u>Purchased Professional and Technical Services</u>				
330 Other Professional Services				34,748.11
Total Purchased Professional and Technical Services				\$34,748.11
400 <u>Purchased Property Services</u>				
430 Repairs and Maintenance Services				159.02
490 Other Purchased Property Services				1,913.59
Total Purchased Property Services				\$2,072.61
500 <u>Other Purchased Services</u>				
580 Travel				1,018.40
Total Other Purchased Services				\$1,018.40
600 <u>Supplies</u>				
610 General Supplies				3,908.78
Total Supplies				\$3,908.78
800 <u>Other Objects</u>				
810 Dues and Fees				36.74
Total Other Objects				\$36.74
Total 2519 Other Fiscal Services				\$1,051,486.21

LEA : 113365203 Penn Manor SD

Printed 12/12/2025 12:28:16 PM

General Fund (10)

2540 Printing, Publishing and Duplicating Services	<u>Elementary</u>	<u>Secondary</u>	<u>Federal</u>	<u>Total</u>
500 <u>Other Purchased Services</u>				
550 Printing and Binding				1,021.84
Total Other Purchased Services				\$1,021.84
Total 2540 Printing, Publishing and Duplicating Services				\$1,021.84

LEA : 113365203 Penn Manor SD

Printed 12/12/2025 12:28:16 PM

General Fund (10)

2600 Operation and Maintenance of Plant Services	Elementary	Secondary	Federal	Total
100 <u>Personnel Services – Salaries</u>				
100 Personnel Services – Salaries				2,314,986.76
Total Personnel Services – Salaries				\$2,314,986.76
200 <u>Personnel Services – Employee Benefits</u>				
210 Group Insurance – Contracted Provider				5,548.98
220 Social Security Contributions				171,998.73
230 PSERS Retirement Contributions				769,028.85
260 Workers' Compensation				17,446.00
270 Group Insurance – Self-Insurance				742,349.00
Total Personnel Services – Employee Benefits				\$1,706,371.56
300 <u>Purchased Professional and Technical Services</u>				
350 Security / Safety Services				225,422.38
Total Purchased Professional and Technical Services				\$225,422.38
400 <u>Purchased Property Services</u>				
410 Cleaning Services				87,712.21
420 Utility Services				269,214.97
430 Repairs and Maintenance Services				972,812.20
Total Purchased Property Services				\$1,329,739.38
500 <u>Other Purchased Services</u>				
523 General Property and Liability Insurance				483,012.00
530 Communications				17,526.49
580 Travel				1,092.02
591 Services Purchased Locally				33,780.47
Total Other Purchased Services				\$535,410.98
600 <u>Supplies</u>				
610 General Supplies	322,143.13	341,535.47		663,678.60
620 Energy				1,224,080.40
650 Supplies & Fees – Technology Related				40,395.61
Total Supplies	\$322,143.13	\$341,535.47		\$1,928,154.61
700 <u>Property</u>				
752 Capital Equipment – Original and Additional				88,584.33
Total Property				\$88,584.33
800 <u>Other Objects</u>				
810 Dues and Fees				35.00
Total Other Objects				\$35.00
Total 2600 Operation and Maintenance of Plant Services	\$322,143.13	\$341,535.47		\$8,128,705.00

LEA : 113365203 Penn Manor SD

Printed 12/12/2025 12:28:16 PM

General Fund (10)

2620 Operation of Buildings Services	Elementary	Secondary	Federal	Total
100 <u>Personnel Services – Salaries</u>				
100 Personnel Services – Salaries				2,314,986.76
Total Personnel Services – Salaries				\$2,314,986.76
200 <u>Personnel Services – Employee Benefits</u>				
210 Group Insurance – Contracted Provider				5,548.98
220 Social Security Contributions				171,998.73
230 PSERS Retirement Contributions				769,028.85
260 Workers' Compensation				17,446.00
270 Group Insurance – Self-Insurance				742,349.00
Total Personnel Services – Employee Benefits				\$1,706,371.56
300 <u>Purchased Professional and Technical Services</u>				
350 Security / Safety Services				15,217.37
Total Purchased Professional and Technical Services				\$15,217.37
400 <u>Purchased Property Services</u>				
410 Cleaning Services				87,712.21
420 Utility Services				269,214.97
430 Repairs and Maintenance Services				887,023.43
Total Purchased Property Services				\$1,243,950.61
500 <u>Other Purchased Services</u>				
523 General Property and Liability Insurance				483,012.00
530 Communications				17,526.49
580 Travel				1,092.02
Total Other Purchased Services				\$501,630.51
600 <u>Supplies</u>				
610 General Supplies	216,546.37	241,741.57		458,287.94
620 Energy				1,224,080.40
650 Supplies & Fees – Technology Related				40,395.61
Total Supplies	\$216,546.37	\$241,741.57		\$1,722,763.95
700 <u>Property</u>				
752 Capital Equipment – Original and Additional				88,584.33
Total Property				\$88,584.33
800 <u>Other Objects</u>				
810 Dues and Fees				35.00
Total Other Objects				\$35.00
Total 2620 Operation of Buildings Services	\$216,546.37	\$241,741.57		\$7,593,540.09

LEA : 113365203 Penn Manor SD

Printed 12/12/2025 12:28:16 PM

General Fund (10)

2650 Vehicle Operation and Maintenance Services (Other Than Student Transportation Vehicles)	<u>Elementary</u>	<u>Secondary</u>	<u>Federal</u>	<u>Total</u>
400 <u>Purchased Property Services</u>				
430 Repairs and Maintenance Services				85,788.77
Total Purchased Property Services				\$85,788.77
Total 2650 Vehicle Operation and Maintenance Services (Other Than Student Transportation Vehicles)				\$85,788.77

LEA : 113365203 Penn Manor SD

Printed 12/12/2025 12:28:16 PM

General Fund (10)				
2660 Safety and Security Services	<u>Elementary</u>	<u>Secondary</u>	<u>Federal</u>	<u>Total</u>
300 <u>Purchased Professional and Technical Services</u>				
350 Security / Safety Services				210,205.01
Total Purchased Professional and Technical Services				\$210,205.01
500 <u>Other Purchased Services</u>				
591 Services Purchased Locally				33,780.47
Total Other Purchased Services				\$33,780.47
600 <u>Supplies</u>				
610 General Supplies	105,596.76	99,793.90		205,390.66
Total Supplies	\$105,596.76	\$99,793.90		\$205,390.66
Total 2660 Safety and Security Services	\$105,596.76	\$99,793.90		\$449,376.14

LEA : 113365203 Penn Manor SD

Printed 12/12/2025 12:28:16 PM

General Fund (10)				
2700 Student Transportation Services	<u>Elementary</u>	<u>Secondary</u>	<u>Federal</u>	<u>Total</u>
100 <u>Personnel Services – Salaries</u>				
100 Personnel Services – Salaries				96,941.88
Total Personnel Services – Salaries				\$96,941.88
200 <u>Personnel Services – Employee Benefits</u>				
210 Group Insurance – Contracted Provider				165.60
220 Social Security Contributions				7,331.61
230 PSERS Retirement Contributions				29,672.22
260 Workers' Compensation				578.01
270 Group Insurance – Self-Insurance				14,356.94
Total Personnel Services – Employee Benefits				\$52,104.38
300 <u>Purchased Professional and Technical Services</u>				
330 Other Professional Services				725.00
Total Purchased Professional and Technical Services				\$725.00
400 <u>Purchased Property Services</u>				
430 Repairs and Maintenance Services				8,900.00
Total Purchased Property Services				\$8,900.00
500 <u>Other Purchased Services</u>				
513 Contracted Carriers				5,202,937.35
516 Student Transportation Services From the IU				70,940.58
Total Other Purchased Services				\$5,273,877.93
600 <u>Supplies</u>				
610 General Supplies				3,044.19
Total Supplies				\$3,044.19
Total 2700 Student Transportation Services				\$5,435,593.38

LEA : 113365203 Penn Manor SD

Printed 12/12/2025 12:28:16 PM

General Fund (10)

2710 Supervision of Student Transportation Services	<u>Elementary</u>	<u>Secondary</u>	<u>Federal</u>	<u>Total</u>
100 <u>Personnel Services – Salaries</u>				
100 Personnel Services – Salaries				82,843.69
Total Personnel Services – Salaries				\$82,843.69
200 <u>Personnel Services – Employee Benefits</u>				
210 Group Insurance – Contracted Provider				165.60
220 Social Security Contributions				7,326.86
230 PSERS Retirement Contributions				29,672.22
260 Workers' Compensation				578.01
270 Group Insurance – Self-Insurance				14,356.94
Total Personnel Services – Employee Benefits				\$52,099.63
Total 2710 Supervision of Student Transportation Services				\$134,943.32

LEA : 113365203 Penn Manor SD

Printed 12/12/2025 12:28:16 PM

General Fund (10)

2719 Supervision of Student Transportation Services – All Other Supervision	<u>Elementary</u>	<u>Secondary</u>	<u>Federal</u>	<u>Total</u>
100 <u>Personnel Services – Salaries</u>				
100 Personnel Services – Salaries				82,843.69
Total Personnel Services – Salaries				\$82,843.69
200 <u>Personnel Services – Employee Benefits</u>				
210 Group Insurance – Contracted Provider				165.60
220 Social Security Contributions				7,326.86
230 PSERS Retirement Contributions				29,672.22
260 Workers' Compensation				578.01
270 Group Insurance – Self-Insurance				14,356.94
Total Personnel Services – Employee Benefits				\$52,099.63
Total 2719 Supervision of Student Transportation Services – All Other Supervision				\$134,943.32

LEA : 113365203 Penn Manor SD

Printed 12/12/2025 12:28:16 PM

General Fund (10)

2720 Vehicle Operation Services	<u>Elementary</u>	<u>Secondary</u>	<u>Federal</u>	<u>Total</u>
100 <u>Personnel Services – Salaries</u>				
100 Personnel Services – Salaries				14,098.19
Total Personnel Services – Salaries				\$14,098.19
200 <u>Personnel Services – Employee Benefits</u>				
220 Social Security Contributions				4.75
Total Personnel Services – Employee Benefits				\$4.75
400 <u>Purchased Property Services</u>				
430 Repairs and Maintenance Services				8,900.00
Total Purchased Property Services				\$8,900.00
500 <u>Other Purchased Services</u>				
513 Contracted Carriers				4,496,182.83
516 Student Transportation Services From the IU				70,940.58
Total Other Purchased Services				\$4,567,123.41
600 <u>Supplies</u>				
610 General Supplies				3,044.19
Total Supplies				\$3,044.19
Total 2720 Vehicle Operation Services				\$4,593,170.54

LEA : 113365203 Penn Manor SD

Printed 12/12/2025 12:28:16 PM

General Fund (10)

2750 Nonpublic Transportation	<u>Elementary</u>	<u>Secondary</u>	<u>Federal</u>	<u>Total</u>
500 <u>Other Purchased Services</u>				
513 Contracted Carriers				706,754.52
Total Other Purchased Services				\$706,754.52
Total 2750 Nonpublic Transportation				\$706,754.52

LEA : 113365203 Penn Manor SD

Printed 12/12/2025 12:28:16 PM

General Fund (10)

2790 Other Student Transportation Services	<u>Elementary</u>	<u>Secondary</u>	<u>Federal</u>	<u>Total</u>
300 <u>Purchased Professional and Technical Services</u>				
330 Other Professional Services				725.00
Total Purchased Professional and Technical Services				\$725.00
Total 2790 Other Student Transportation Services				\$725.00

LEA : 113365203 Penn Manor SD

Printed 12/12/2025 12:28:16 PM

General Fund (10)				
2800 Support Services – Central				
	<u>Elementary</u>	<u>Secondary</u>	<u>Federal</u>	<u>Total</u>
100 <u>Personnel Services – Salaries</u>				
100 Personnel Services – Salaries				1,241,993.28
Total Personnel Services – Salaries				\$1,241,993.28
200 <u>Personnel Services – Employee Benefits</u>				
210 Group Insurance – Contracted Provider				2,940.06
220 Social Security Contributions				93,516.91
230 PSERS Retirement Contributions				379,954.05
240 Tuition Reimbursement				37,118.00
260 Workers' Compensation				7,741.99
270 Group Insurance – Self-Insurance				355,689.91
Total Personnel Services – Employee Benefits				\$876,960.92
300 <u>Purchased Professional and Technical Services</u>				
329 Professional Educational Services – Other				16,117.21
330 Other Professional Services				22,839.21
340 Technical Services				25,203.55
360 Employee Training and Development Services				28,039.37
Total Purchased Professional and Technical Services				\$92,199.34
400 <u>Purchased Property Services</u>				
430 Repairs and Maintenance Services				240,325.64
Total Purchased Property Services				\$240,325.64
500 <u>Other Purchased Services</u>				
530 Communications				43,141.88
549 Other Advertising/Public Relations				352.49
580 Travel				1,797.20
Total Other Purchased Services				\$45,291.57
600 <u>Supplies</u>				
610 General Supplies				6,161.82
650 Supplies & Fees – Technology Related				39,886.03
Total Supplies				\$46,047.85
800 <u>Other Objects</u>				
810 Dues and Fees				4,335.84
Total Other Objects				\$4,335.84
Total 2800 Support Services – Central				\$2,547,154.44

LEA : 113365203 Penn Manor SD

Printed 12/12/2025 12:28:16 PM

General Fund (10)

2810 Planning, Research, Development and Evaluation Services	<u>Elementary</u>	<u>Secondary</u>	<u>Federal</u>	<u>Total</u>
100 <u>Personnel Services – Salaries</u>				
100 Personnel Services – Salaries				1,111,398.70
Total Personnel Services – Salaries				\$1,111,398.70
200 <u>Personnel Services – Employee Benefits</u>				
210 Group Insurance – Contracted Provider				2,940.06
220 Social Security Contributions				83,360.37
230 PSERS Retirement Contributions				374,930.98
260 Workers' Compensation				7,741.99
270 Group Insurance – Self-Insurance				353,789.92
Total Personnel Services – Employee Benefits				\$822,763.32
300 <u>Purchased Professional and Technical Services</u>				
329 Professional Educational Services – Other				16,117.21
340 Technical Services				12,256.24
Total Purchased Professional and Technical Services				\$28,373.45
400 <u>Purchased Property Services</u>				
430 Repairs and Maintenance Services				27,709.65
Total Purchased Property Services				\$27,709.65
500 <u>Other Purchased Services</u>				
580 Travel				1,771.86
Total Other Purchased Services				\$1,771.86
800 <u>Other Objects</u>				
810 Dues and Fees				397.21
Total Other Objects				\$397.21
Total 2810 Planning, Research, Development and Evaluation Services				\$1,992,414.19

LEA : 113365203 Penn Manor SD

Printed 12/12/2025 12:28:16 PM

General Fund (10)				
2830 Staff Services	<u>Elementary</u>	<u>Secondary</u>	<u>Federal</u>	<u>Total</u>
100 <u>Personnel Services – Salaries</u>				
100 Personnel Services – Salaries				130,594.58
Total Personnel Services – Salaries				\$130,594.58
200 <u>Personnel Services – Employee Benefits</u>				
220 Social Security Contributions				10,156.54
230 PSERS Retirement Contributions				5,023.07
240 Tuition Reimbursement				37,118.00
270 Group Insurance – Self-Insurance				1,899.99
Total Personnel Services – Employee Benefits				\$54,197.60
300 <u>Purchased Professional and Technical Services</u>				
330 Other Professional Services				22,839.21
360 Employee Training and Development Services				28,039.37
Total Purchased Professional and Technical Services				\$50,878.58
500 <u>Other Purchased Services</u>				
549 Other Advertising/Public Relations				352.49
580 Travel				25.34
Total Other Purchased Services				\$377.83
600 <u>Supplies</u>				
610 General Supplies				6,161.82
650 Supplies & Fees – Technology Related				34,350.00
Total Supplies				\$40,511.82
800 <u>Other Objects</u>				
810 Dues and Fees				3,938.63
Total Other Objects				\$3,938.63
Total 2830 Staff Services				\$280,499.04

LEA : 113365203 Penn Manor SD

Printed 12/12/2025 12:28:16 PM

General Fund (10)

2831 Supervision of Staff Services	<u>Elementary</u>	<u>Secondary</u>	<u>Federal</u>	<u>Total</u>
100 <u>Personnel Services – Salaries</u>				
100 Personnel Services – Salaries				130,594.58
Total Personnel Services – Salaries				\$130,594.58
200 <u>Personnel Services – Employee Benefits</u>				
220 Social Security Contributions				10,156.54
230 PSERS Retirement Contributions				5,023.07
270 Group Insurance – Self-Insurance				1,899.99
Total Personnel Services – Employee Benefits				\$17,079.60
500 <u>Other Purchased Services</u>				
580 Travel				25.34
Total Other Purchased Services				\$25.34
600 <u>Supplies</u>				
610 General Supplies				6,161.82
Total Supplies				\$6,161.82
Total 2831 Supervision of Staff Services				\$153,861.34

LEA : 113365203 Penn Manor SD

Printed 12/12/2025 12:28:16 PM

General Fund (10)

2832 Recruitment and Placement Services	<u>Elementary</u>	<u>Secondary</u>	<u>Federal</u>	<u>Total</u>
300 <u>Purchased Professional and Technical Services</u>				
330 Other Professional Services				12,903.20
Total Purchased Professional and Technical Services				\$12,903.20
500 <u>Other Purchased Services</u>				
549 Other Advertising/Public Relations				352.49
Total Other Purchased Services				\$352.49
600 <u>Supplies</u>				
650 Supplies & Fees – Technology Related				34,350.00
Total Supplies				\$34,350.00
800 <u>Other Objects</u>				
810 Dues and Fees				3,938.63
Total Other Objects				\$3,938.63
Total 2832 Recruitment and Placement Services				\$51,544.32

LEA : 113365203 Penn Manor SD

Printed 12/12/2025 12:28:16 PM

General Fund (10)

2834 Staff Development Services – Non-Instructional, Certified Staff Only	<u>Elementary</u>	<u>Secondary</u>	<u>Federal</u>	<u>Total</u>
200 <u>Personnel Services – Employee Benefits</u>				
240 Tuition Reimbursement				32,858.00
Total Personnel Services – Employee Benefits				\$32,858.00
300 <u>Purchased Professional and Technical Services</u>				
360 Employee Training and Development Services				15,326.51
Total Purchased Professional and Technical Services				\$15,326.51
Total 2834 Staff Development Services – Non-Instructional, Certified Staff Only				\$48,184.51

LEA : 113365203 Penn Manor SD

Printed 12/12/2025 12:28:16 PM

General Fund (10)				
2836 Staff Development Services – Non-Instructional, Non-Certified Staff Only	<u>Elementary</u>	<u>Secondary</u>	<u>Federal</u>	<u>Total</u>
200 <u>Personnel Services – Employee Benefits</u>				
240 Tuition Reimbursement				4,260.00
Total Personnel Services – Employee Benefits				\$4,260.00
300 <u>Purchased Professional and Technical Services</u>				
360 Employee Training and Development Services				12,712.86
Total Purchased Professional and Technical Services				\$12,712.86
Total 2836 Staff Development Services – Non-Instructional, Non-Certified Staff Only				\$16,972.86

LEA : 113365203 Penn Manor SD

Printed 12/12/2025 12:28:16 PM

General Fund (10)

2839 Other Staff Services

<u>Elementary</u>	<u>Secondary</u>	<u>Federal</u>	<u>Total</u>
-------------------	------------------	----------------	--------------

300 Purchased Professional and Technical Services

330 Other Professional Services				9,936.01
---------------------------------	--	--	--	----------

Total Purchased Professional and Technical Services				\$9,936.01
--	--	--	--	-------------------

Total 2839 Other Staff Services				\$9,936.01
--	--	--	--	-------------------

LEA : 113365203 Penn Manor SD

Printed 12/12/2025 12:28:16 PM

General Fund (10)

2840 Data Processing Services	<u>Elementary</u>	<u>Secondary</u>	<u>Federal</u>	<u>Total</u>
300 <u>Purchased Professional and Technical Services</u>				
340 Technical Services				12,947.31
Total Purchased Professional and Technical Services				\$12,947.31
400 <u>Purchased Property Services</u>				
430 Repairs and Maintenance Services				212,615.99
Total Purchased Property Services				\$212,615.99
500 <u>Other Purchased Services</u>				
530 Communications				43,141.88
Total Other Purchased Services				\$43,141.88
600 <u>Supplies</u>				
650 Supplies & Fees – Technology Related				5,536.03
Total Supplies				\$5,536.03
Total 2840 Data Processing Services				\$274,241.21

LEA : 113365203 Penn Manor SD

Printed 12/12/2025 12:28:16 PM

General Fund (10)

2900 Other Support Services	<u>Elementary</u>	<u>Secondary</u>	<u>Federal</u>	<u>Total</u>
500 <u>Other Purchased Services</u>				
595 IU Payments By Withholding				40,213.04
596 Direct Payments To Intermediate Units				2,700.00
Total Other Purchased Services				\$42,913.04
Total 2900 Other Support Services				\$42,913.04

LEA : 113365203 Penn Manor SD

Printed 12/12/2025 12:28:16 PM

General Fund (10)

2910 Support Services Not Listed Elsewhere In the 2000 Series

Elementary Secondary Federal Total

500 <u>Other Purchased Services</u>				
595 IU Payments By Withholding				40,213.04
596 Direct Payments To Intermediate Units				2,700.00
Total Other Purchased Services				\$42,913.04
Total 2910 Support Services Not Listed Elsewhere In the 2000 Series				\$42,913.04

LEA : 113365203 Penn Manor SD

Printed 12/12/2025 12:28:27 PM

General Fund (10)

3000 Operation of Non-Instructional Services		Total
100 <u>Personnel Services – Salaries</u>		
100 Personnel Services – Salaries		17,162.37
130 Professional – Other		1,002,448.71
150 Office / Clerical		33,648.95
Total Personnel Services – Salaries		\$1,053,260.03
200 <u>Personnel Services – Employee Benefits</u>		
210 Group Insurance – Contracted Provider		643.24
220 Social Security Contributions		78,756.20
230 PSERS Retirement Contributions		333,269.31
260 Workers' Compensation		6,932.00
270 Group Insurance – Self-Insurance		14,744.16
Total Personnel Services – Employee Benefits		\$434,344.91
300 <u>Purchased Professional and Technical Services</u>		
330 Other Professional Services		9,100.00
390 Other Purchased Professional and Technical Services		63,932.50
Total Purchased Professional and Technical Services		\$73,032.50
400 <u>Purchased Property Services</u>		
430 Repairs and Maintenance Services		25,299.67
440 Rentals		43,840.40
Total Purchased Property Services		\$69,140.07
500 <u>Other Purchased Services</u>		
510 Student Transportation Services		113,055.05
520 Insurance – General		30,785.00
580 Travel		5,728.53
Total Other Purchased Services		\$149,568.58
600 <u>Supplies</u>		
610 General Supplies		174,969.53
630 Food		6,799.00
650 Supplies & Fees – Technology Related		27,270.00
Total Supplies		\$209,038.53
800 <u>Other Objects</u>		
810 Dues and Fees		7,475.35
860 Grants To Municipal and Community Service Organizations		49,000.00
890 Miscellaneous Expenditures		14,901.24
Total Other Objects		\$71,376.59
Total 3000 Operation of Non-Instructional Services		\$2,059,761.21

LEA : 113365203 Penn Manor SD

Printed 12/12/2025 12:28:27 PM

General Fund (10)

3200 Student Activities

	<u>Elementary</u>	<u>Secondary</u>	<u>Federal</u>	<u>Total</u>
100 <u>Personnel Services – Salaries</u>				
130 Professional – Other				1,002,448.71
150 Office / Clerical				33,648.95
Total Personnel Services – Salaries				\$1,036,097.66
200 <u>Personnel Services – Employee Benefits</u>				
210 Group Insurance – Contracted Provider				643.24
220 Social Security Contributions				78,113.75
230 PSERS Retirement Contributions				330,376.55
260 Workers' Compensation				6,932.00
270 Group Insurance – Self-Insurance				14,744.16
Total Personnel Services – Employee Benefits				\$430,809.70
300 <u>Purchased Professional and Technical Services</u>				
330 Other Professional Services				9,100.00
390 Other Purchased Professional and Technical Services				63,932.50
Total Purchased Professional and Technical Services				\$73,032.50
400 <u>Purchased Property Services</u>				
430 Repairs and Maintenance Services				25,299.67
440 Rentals				43,840.40
Total Purchased Property Services				\$69,140.07
500 <u>Other Purchased Services</u>				
510 Student Transportation Services				113,055.05
520 Insurance – General				30,785.00
580 Travel				5,728.53
Total Other Purchased Services				\$149,568.58
600 <u>Supplies</u>				
610 General Supplies				170,493.70
630 Food				6,799.00
650 Supplies & Fees – Technology Related				27,270.00
Total Supplies				\$204,562.70
800 <u>Other Objects</u>				
810 Dues and Fees				7,475.35
860 Grants To Municipal and Community Service Organizations				49,000.00
890 Miscellaneous Expenditures				14,901.24
Total Other Objects				\$71,376.59
Total 3200 Student Activities				\$2,034,587.80

LEA : 113365203 Penn Manor SD

Printed 12/12/2025 12:28:27 PM

General Fund (10)

3300 Community Services	<u>Elementary</u>	<u>Secondary</u>	<u>Federal</u>	<u>Total</u>
100 <u>Personnel Services – Salaries</u>				
100 Personnel Services – Salaries			17,162.37	17,162.37
Total Personnel Services – Salaries			\$17,162.37	\$17,162.37
200 <u>Personnel Services – Employee Benefits</u>				
220 Social Security Contributions			642.45	642.45
230 PSERS Retirement Contributions			2,892.76	2,892.76
Total Personnel Services – Employee Benefits			\$3,535.21	\$3,535.21
600 <u>Supplies</u>				
610 General Supplies			2,270.56	2,270.56
Total Supplies			\$2,270.56	\$2,270.56
Total 3300 Community Services			\$22,968.14	\$22,968.14

LEA : 113365203 Penn Manor SD

Printed 12/12/2025 12:28:27 PM

General Fund (10)				
3400 Scholarships and Awards	<u>Elementary</u>	<u>Secondary</u>	<u>Federal</u>	<u>Total</u>
600 <u>Supplies</u>				
610 General Supplies				2,205.27
Total Supplies				\$2,205.27
Total 3400 Scholarships and Awards				\$2,205.27

LEA : 113365203 Penn Manor SD

Printed 12/12/2025 12:28:42 PM

General Fund (10)

5000 Other Expenditures and Financing Uses		<u>Total</u>
800 <u>Other Objects</u>		
830 Interest		3,828,510.33
880 Refunds of Prior Years' Receipts		6,921.08
Total Other Objects		\$3,835,431.41
900 <u>Other Uses of Funds</u>		
910 Redemption of Principal		5,305,000.00
932 Capital Reserve Fund Transfers Applicable To Fund 32		1,750,000.00
939 Other Fund Transfers		16,657.99
Total Other Uses of Funds		\$7,071,657.99
Total 5000 Other Expenditures and Financing Uses		\$10,907,089.40

LEA : 113365203 Penn Manor SD

Printed 12/12/2025 12:28:42 PM

General Fund (10)

5100 Debt Service / Other Expenditures and Financing Uses	<u>Elementary</u>	<u>Secondary</u>	<u>Federal</u>	<u>Total</u>
800 <u>Other Objects</u>				
830 Interest				3,828,510.33
880 Refunds of Prior Years' Receipts				6,921.08
Total Other Objects				\$3,835,431.41
900 <u>Other Uses of Funds</u>				
910 Redemption of Principal				5,305,000.00
Total Other Uses of Funds				\$5,305,000.00
Total 5100 Debt Service / Other Expenditures and Financing Uses				\$9,140,431.41

LEA : 113365203 Penn Manor SD

Printed 12/12/2025 12:28:42 PM

General Fund (10)				
5110 Debt Service	<u>Elementary</u>	<u>Secondary</u>	<u>Federal</u>	<u>Total</u>
800 <u>Other Objects</u>				
830 Interest				3,828,510.33
Total Other Objects				\$3,828,510.33
900 <u>Other Uses of Funds</u>				
910 Redemption of Principal				5,305,000.00
Total Other Uses of Funds				\$5,305,000.00
Total 5110 Debt Service				\$9,133,510.33

LEA : 113365203 Penn Manor SD

Printed 12/12/2025 12:28:42 PM

General Fund (10)

5130 Refund of Prior Year Revenues / Receipts	<u>Elementary</u>	<u>Secondary</u>	<u>Federal</u>	<u>Total</u>
800 <u>Other Objects</u>				
880 Refunds of Prior Years' Receipts				6,921.08
Total Other Objects				\$6,921.08
Total 5130 Refund of Prior Year Revenues / Receipts				\$6,921.08

LEA : 113365203 Penn Manor SD

Printed 12/12/2025 12:28:42 PM

General Fund (10)

5200 Interfund Transfers – Out	<u>Elementary</u>	<u>Secondary</u>	<u>Federal</u>	<u>Total</u>
900 <u>Other Uses of Funds</u>				
932 Capital Reserve Fund Transfers Applicable To Fund 32				1,750,000.00
939 Other Fund Transfers				16,657.99
Total Other Uses of Funds				\$1,766,657.99
Total 5200 Interfund Transfers – Out				\$1,766,657.99

LEA : 113365203 Penn Manor SD

Printed 12/12/2025 12:28:42 PM

General Fund (10)

5230 Capital Projects Fund Transfers	<u>Elementary</u>	<u>Secondary</u>	<u>Federal</u>	<u>Total</u>
900 <u>Other Uses of Funds</u>				
932 Capital Reserve Fund Transfers Applicable To Fund 32				1,750,000.00
Total Other Uses of Funds				\$1,750,000.00
Total 5230 Capital Projects Fund Transfers				\$1,750,000.00

LEA : 113365203 Penn Manor SD

Printed 12/12/2025 12:28:42 PM

General Fund (10)

5250 Enterprise Fund Transfers	<u>Elementary</u>	<u>Secondary</u>	<u>Federal</u>	<u>Total</u>
900 <u>Other Uses of Funds</u>				
939 Other Fund Transfers				16,657.99
Total Other Uses of Funds				\$16,657.99
Total 5250 Enterprise Fund Transfers				\$16,657.99

LEA : 113365203 Penn Manor SD

Printed 12/12/2025 12:28:23 PM

Capital Reserve Fund - § 1431 (32)

2000 Support Services

Total

700 Property

752 Capital Equipment – Original and Additional

21,024.22

Total Property	\$21,024.22
Total 2000 Support Services	\$21,024.22

LEA : 113365203 Penn Manor SD

Printed 12/12/2025 12:28:23 PM

Capital Reserve Fund - § 1431 (32)

2600 Operation and Maintenance of Plant Services	<u>Elementary</u>	<u>Secondary</u>	<u>Federal</u>	<u>Total</u>
700 <u>Property</u>				
752 Capital Equipment – Original and Additional				21,024.22
Total Property				\$21,024.22
Total 2600 Operation and Maintenance of Plant Services				\$21,024.22

LEA : 113365203 Penn Manor SD

Printed 12/12/2025 12:28:23 PM

Capital Reserve Fund - § 1431 (32)

2650 Vehicle Operation and Maintenance Services (Other Than Student Transportation Vehicles)	<u>Elementary</u>	<u>Secondary</u>	<u>Federal</u>	<u>Total</u>
700 <u>Property</u>				
752 Capital Equipment – Original and Additional				21,024.22
Total Property				\$21,024.22
Total 2650 Vehicle Operation and Maintenance Services (Other Than Student Transportation Vehicles)				\$21,024.22

LEA : 113365203 Penn Manor SD

Printed 12/12/2025 12:28:37 PM

Capital Reserve Fund - § 1431 (32)

4000 Facilities Acquisition, Construction and Improvement Services		<u>Total</u>
300	<u>Purchased Professional and Technical Services</u>	
330	Other Professional Services	26,473.13
Total Purchased Professional and Technical Services		\$26,473.13
400	<u>Purchased Property Services</u>	
430	Repairs and Maintenance Services	154,056.00
Total Purchased Property Services		\$154,056.00
600	<u>Supplies</u>	
610	General Supplies	371,573.00
Total Supplies		\$371,573.00
700	<u>Property</u>	
752	Capital Equipment – Original and Additional	230,570.00
Total Property		\$230,570.00
Total 4000 Facilities Acquisition, Construction and Improvement Services		\$782,672.13

LEA : 113365203 Penn Manor SD

Printed 12/12/2025 12:28:37 PM

Capital Reserve Fund - § 1431 (32)

4400 Architecture and Engineering Services / Educational Specifications – Improvements	<u>Elementary</u>	<u>Secondary</u>	<u>Federal</u>	<u>Total</u>
300 <u>Purchased Professional and Technical Services</u>				
330 Other Professional Services				26,473.13
Total Purchased Professional and Technical Services				\$26,473.13
Total 4400 Architecture and Engineering Services / Educational Specifications – Improvements				\$26,473.13

LEA : 113365203 Penn Manor SD

Printed 12/12/2025 12:28:37 PM

Capital Reserve Fund - § 1431 (32)

4600 Existing Building Improvement Services	<u>Elementary</u>	<u>Secondary</u>	<u>Federal</u>	<u>Total</u>
400 <u>Purchased Property Services</u>				
430 Repairs and Maintenance Services				154,056.00
Total Purchased Property Services				\$154,056.00
600 <u>Supplies</u>				
610 General Supplies				371,573.00
Total Supplies				\$371,573.00
700 <u>Property</u>				
752 Capital Equipment – Original and Additional				230,570.00
Total Property				\$230,570.00
Total 4600 Existing Building Improvement Services				\$756,199.00

LEA : 113365203 Penn Manor SD

Printed 12/12/2025 12:28:54 PM

	<u>General Fund(10)</u>	<u>Student Sponsored Activity Fund(21)</u>	<u>Public Purpose Trust(27)</u>	<u>Other Compt Approved (28)</u>	<u>Athletic / Activity(29)</u>
1000 <u>Instruction</u>					
1100 Regular Programs - Elementary / Secondary	45,035,606.26				
1200 Special Programs - Elementary / Secondary	20,440,340.12				
1300 Vocational Education	2,893,229.21				
1400 Other Instructional Programs - Elementary / Secondary	253,973.49				
1500 Nonpublic School Programs	10,367.43				
Total Instruction	\$68,633,516.51				
2000 <u>Support Services</u>					
2100 Support Services - Students	3,850,263.89				
2200 Support Services - Instructional Staff	2,052,835.48				
2300 Support Services - Administration	6,290,862.54				
2400 Support Services - Pupil Health	1,146,781.74				
2500 Support Services - Business	1,234,787.35				
2600 Operation and Maintenance of Plant Services	8,128,705.00				
2700 Student Transportation Services	5,435,593.38				
2800 Support Services - Central	2,547,154.44				
2900 Other Support Services	42,913.04				
Total Support Services	\$30,729,896.86				
3000 <u>Operation of Non-Instructional Services</u>					
3200 Student Activities	2,034,587.80				
3300 Community Services	22,968.14				
3400 Scholarships and Awards	2,205.27				
Total Operation of Non-Instructional Services	\$2,059,761.21				
4000 <u>Facilities Acquisition, Construction and Improvement Services</u>					
4400 Architecture and Engineering Services / Educational Specifications - Improvements					
4600 Existing Building Improvement Services					
Total Facilities Acquisition, Construction and Improvement Services					
5000 <u>Other Expenditures and Financing Uses</u>					
5100 Debt Service / Other Expenditures and Financing Uses	9,140,431.41				
5200 Interfund Transfers - Out	1,766,657.99				
Total Other Expenditures and Financing Uses	\$10,907,089.40				
TOTAL ACTUAL EXPENDITURES & OTHER FINANCING USES	\$112,330,263.98				

LEA : 113365203 Penn Manor SD

Printed 12/12/2025 12:28:54 PM

	<u>Capital Reserve (690.</u> <u>1850)(31)</u>	<u>Capital Reserve (1431)(32)</u>	<u>Other Capital Projects</u> <u>Fund(39)</u>	<u>Debt Service(40)</u>	<u>Permanent(90)</u>
1000 <u>Instruction</u>					
1100 Regular Programs - Elementary / Secondary					
1200 Special Programs - Elementary / Secondary					
1300 Vocational Education					
1400 Other Instructional Programs - Elementary / Secondary					
1500 Nonpublic School Programs					
Total Instruction					
2000 <u>Support Services</u>					
2100 Support Services - Students					
2200 Support Services - Instructional Staff					
2300 Support Services - Administration					
2400 Support Services - Pupil Health					
2500 Support Services - Business					
2600 Operation and Maintenance of Plant Services			21,024.22		
2700 Student Transportation Services					
2800 Support Services - Central					
2900 Other Support Services					
Total Support Services			\$21,024.22		
3000 <u>Operation of Non-Instructional Services</u>					
3200 Student Activities					
3300 Community Services					
3400 Scholarships and Awards					
Total Operation of Non-Instructional Services					
4000 <u>Facilities Acquisition, Construction and Improvement Services</u>					
4400 Architecture and Engineering Services / Educational Specifications - Improvements			26,473.13		
4600 Existing Building Improvement Services			756,199.00		
Total Facilities Acquisition, Construction and Improvement Services			\$782,672.13		
5000 <u>Other Expenditures and Financing Uses</u>					
5100 Debt Service / Other Expenditures and Financing Uses					
5200 Interfund Transfers - Out					
Total Other Expenditures and Financing Uses					
TOTAL ACTUAL EXPENDITURES & OTHER FINANCING USES			\$803,696.35		

LEA : 113365203 Penn Manor SD

Printed 12/12/2025 12:28:54 PM

	<u>Total</u>
1000 <u>Instruction</u>	
1100 Regular Programs - Elementary / Secondary	45,035,606.26
1200 Special Programs - Elementary / Secondary	20,440,340.12
1300 Vocational Education	2,893,229.21
1400 Other Instructional Programs - Elementary / Secondary	253,973.49
1500 Nonpublic School Programs	10,367.43
Total Instruction	\$68,633,516.51
2000 <u>Support Services</u>	
2100 Support Services - Students	3,850,263.89
2200 Support Services - Instructional Staff	2,052,835.48
2300 Support Services - Administration	6,290,862.54
2400 Support Services - Pupil Health	1,146,781.74
2500 Support Services - Business	1,234,787.35
2600 Operation and Maintenance of Plant Services	8,149,729.22
2700 Student Transportation Services	5,435,593.38
2800 Support Services - Central	2,547,154.44
2900 Other Support Services	42,913.04
Total Support Services	\$30,750,921.08
3000 <u>Operation of Non-Instructional Services</u>	
3200 Student Activities	2,034,587.80
3300 Community Services	22,968.14
3400 Scholarships and Awards	2,205.27
Total Operation of Non-Instructional Services	\$2,059,761.21
4000 <u>Facilities Acquisition, Construction and Improvement Services</u>	
4400 Architecture and Engineering Services / Educational Specifications - Improvements	26,473.13
4600 Existing Building Improvement Services	756,199.00
Total Facilities Acquisition, Construction and Improvement Services	\$782,672.13
5000 <u>Other Expenditures and Financing Uses</u>	
5100 Debt Service / Other Expenditures and Financing Uses	9,140,431.41
5200 Interfund Transfers - Out	1,766,657.99
Total Other Expenditures and Financing Uses	\$10,907,089.40
TOTAL ACTUAL EXPENDITURES & OTHER FINANCING USES	\$113,133,960.33

LEA : 113365203 Penn Manor SD

Printed 12/12/2025 12:29:07 PM

PSERS Salary Data (Salary Data should relate to the General Fund only)

Amount	Description	Amount
	Total Salary Base for salaries subject to PSERS withholding	42,827,924.00
	Total Federally Funded salaries subject to PSERS withholding	831,729.00

Title I Expenditure Data

Amount	Description	Amount
	Expenditures Funded with Current Title I Funds	931,990.00
	Expenditures Funded with Carry over Title I Funds	54,516.00
Total	Title I Expenditure Data	\$986,506.00

Title IV Revenue Data

Amount	Description	Amount
	Revenue from Title IV-A-1: Student Support and Academic Enrichment Grants	71,566.00

LEA : 113365203 Penn Manor SD

1 .	<u>Current Special Education Expenditures within Function 1000</u> See list of exclusions in the note below.	20,178,973.00
2 .	<u>Current Special Education Expenditures within Function 2000</u> See list of exclusions in the note below.	2,587,831.00
2A.	<u>Current Special Education Expenditures within Sub-Function 2100</u> This data should also be included in line 2 above. See list of exclusions in the note below.	1,646,181.00
2B.	<u>Current Special Education Expenditures within Sub-Function 2200</u> This data should also be included in line 2 above. See list of exclusions in the note below.	
2C.	<u>Current Special Education Expenditures within Sub-Function 2700</u> This data should also be included in line 2 above. See list of exclusions in the note below.	938,411.00
3.	<u>Current Special Education Expenditures within Sub-Function 3100</u> See list of exclusions in the note below.	
4.	<u>Current Special Education Expenditures within Sub-Function 3200</u> See list of exclusions in the note below.	

Note: The Current Special Education Expenditure amounts for each line should be calculated as follows:

- * Include the total expenditures for special education costs from all governmental funds and the food service fund 51 for the function/sub-function requested
- * Exclude data from sub-functions: 1243,1450,1500,1600,1807,2280,2450,2750,2990
- * Exclude data from objects: 322,511,512,516,561,562,564,566,592,593,594,595,596,597,700,830,899

Benefits for Staff Relative to Collective Bargaining Agreements

	OBJECT	COVERED	NOT COVERED	TOTAL
10 General Fund				
	211 Medical Insurance			
	212 Dental Insurance			
	215 Eye Care Insurance			
	216 Prescription Insurance			
	271 Self-Insurance Medical Benefits	4,923,461.00	2,651,095.00	7,574,556.00
	272 Self-Insurance Dental Benefits	311,768.00	167,875.00	479,643.00
	275 Self-Insurance Eye Care Benefits	68,133.00	36,687.00	104,820.00
	276 Self-Insurance Prescription Benefits			
	FUND TOTAL	\$5,303,362.00	\$2,855,657.00	\$8,159,019.00
50 Enterprise Fund				
	211 Medical Insurance			
	212 Dental Insurance			
	215 Eye Care Insurance			
	216 Prescription Insurance			
	271 Self-Insurance Medical Benefits		373,861.51	373,861.51
	272 Self-Insurance Dental Benefits		16,147.26	16,147.26
	275 Self-Insurance Eye Care Benefits		1,079.73	1,079.73
	276 Self-Insurance Prescription Benefits			
	FUND TOTAL		\$391,088.50	\$391,088.50
60 Internal Service Fund	No Self Insurance data to report			
	211 Medical Insurance			
	212 Dental Insurance			
	215 Eye Care Insurance			
	216 Prescription Insurance			
	271 Self-Insurance Medical Benefits			
	272 Self-Insurance Dental Benefits			
	275 Self-Insurance Eye Care Benefits			
	276 Self-Insurance Prescription Benefits			
	FUND TOTAL			
Total of All Funds		\$5,303,362.00	\$3,246,745.50	\$8,550,107.50

LEA : 113365203 Penn Manor SD

Printed 12/12/2025 12:29:16 PM

Function	Special Education (Prior Year)	Nonspecial Education (Prior Year)	Total (Prior Year)	Special Education (Current Year)	Nonspecial Education (Current Year)	Total (Current Year)
2120 Guidance Services	854,438.45	1,600,844.45	2,455,282.90	947,130.00	1,743,579.00	2,690,709.00
2140 Psychological Services	741,492.27	185,373.07	926,865.34	694,821.02	173,705.22	868,526.24
2150 Speech Pathology and Audiology Services						
2160 Social Work Services						
2260 Instruction and Curriculum Development Services						
2350 Legal and Accounting Services	14,853.30	48,065.26	62,918.56	9,737.00	62,015.00	71,752.00
2420 Medical Services	2,522.81	11,976.09	14,498.90	2,239.86	10,486.64	12,726.50
2440 Nursing Services	197,251.73	936,378.89	1,133,630.62	199,593.72	934,461.50	1,134,055.22
2700 Student Transportation Services	614,031.24	4,691,265.09	5,305,296.33	938,411.66	4,497,181.69	5,435,593.35
Total	\$2,424,589.80	\$7,473,902.85	\$9,898,492.65	\$2,791,933.26	\$7,421,429.05	\$10,213,362.31

LEA : 113365203 Penn Manor SD

(PRINCIPAL AMOUNTS ONLY)								
<u>GOVERNMENTAL FUNDS/ ACTIVITIES</u>	Short-Term Borrowing	General Obligation Bonds/Notes	Authority Building Obligations	Leases, Other Right to Use Arrangements	Extended Term Financing Agreements	Other Long Term Debt/Liabilities	OPEB, Comp Abs, Net Pension Liab	Total
1. Debt at Beginning of Fiscal Year		95,615,000.00				1,420,809.00	124,625,928.00	221,661,737.00
2. Additional Debt Incurred During Year							190,735.00	190,735.00
3. Retirements and Repayments		5,305,000.00				5,049.00	5,459,814.00	10,769,863.00
4. Debt at End of Fiscal Year		90,310,000.00				1,415,760.00	119,356,849.00	211,082,609.00
5. Accreted Interest at End Of Fiscal Year								
6. Total Debt and Accreted Interest		90,310,000.00				1,415,760.00	119,356,849.00	211,082,609.00
7. Current Portion P&I - Due within 1 year		9,132,058.00				141,576.00	225,471.00	9,499,105.00
8. Interest Paid during current fiscal year		3,828,510.33						3,828,510.33

(PRINCIPAL AMOUNTS ONLY)							
<u>PROPRIETARY FUNDS</u>							
1. Debt at Beginning of Fiscal Year							
2. Additional Debt Incurred During Year							
3. Retirements and Repayments							
4. Debt at End of Fiscal Year							
5. Accreted Interest at End Of Fiscal Year							
6. Total Debt and Accreted Interest							
7. Current Portion P&I - Due within 1 year							
8. Interest Paid during current fiscal year							

LEA : 113365203 Penn Manor SD

Total Principal and Interest Payments Made by Your School - All Funds

Function	Fund		Principal (910)	Principal (920)	Interest (830)	Total (Principal +Interest)	Misc Other Uses (990)
5110	10	General Fund	5,305,000.00		3,828,510.33	9,133,510.33	
5110	20	Special Revenue Funds					
5110	30	Capital Projects Funds					
5110	40	Debt Service Fund					
5110	90	Permanent Fund					
5120	10	General Fund					
5120	20	Special Revenue Funds					
5120	30	Capital Projects Funds					
5120	40	Debt Service Fund					
5140	10	General Fund					
5140	20	Special Revenue Funds					
5140	30	Capital Projects Funds					
5140	40	Debt Service Fund					
5140	90	Permanent Fund					
Total Debt Payments - Governmental Funds			\$5,305,000.00		\$3,828,510.33	\$9,133,510.33	

Function	Fund		Principal (910)	Principal (920)	Interest (830)	Total (Principal +Interest)
5110	50	Enterprise Fund				
5110	60	Internal Service Fund				
5120	50	Enterprise Fund				
5120	60	Internal Service Fund				
5140	50	Enterprise Fund				
5140	60	Internal Service Fund				
Total Debt Payments - Proprietary Funds						

LEA : 113365203 Penn Manor SD

Debt Details
Governmental Funds/ Activities

Debt Category	Debt Issue Date (MM/YYYY)	Principal Amounts Only				Current Portion Due Within One Year (Principal and Interest)	Interest Paid During Fiscal Year
		Debt at Beginning of Fiscal Year	Additions	Reductions / Repayments	Debt at End of Fiscal Year		
General Obligation Bonds/Notes – CIB	11/2020	14,165,000.00		4,830,000.00	9,335,000.00	5,477,020.00	169,747.83
General Obligation Bonds/Notes – CIB	07/2019	35,770,000.00		5,000.00	35,765,000.00	1,531,838.00	1,526,925.00
General Obligation Bonds/Notes – CIB	07/2019	9,120,000.00		5,000.00	9,115,000.00	328,700.00	323,787.50
General Obligation Bonds/Notes – CIB	10/2018	36,100,000.00		5,000.00	36,095,000.00	1,794,500.00	1,789,650.00
General Obligation Bonds/Notes – CIB	10/2017	460,000.00		460,000.00			18,400.00
Other Long Term Debt/Liabilities		1,420,809.00		5,049.00	1,415,760.00	141,576.00	
Compensated Absences		2,063,975.00	190,735.00		2,254,710.00	225,471.00	
Other Post-Employment Benefits (OPEB)		8,720,953.00		399,814.00	8,321,139.00		
Net Pension Liability		113,841,000.00		5,060,000.00	108,781,000.00		
Totals for Debt Entered:		\$221,661,737.00	\$190,735.00	\$10,769,863.00	\$211,082,609.00	\$9,499,105.00	\$3,828,510.33

LEA : 113365203 Penn Manor SD

General Fund (10)

Section 1: Tuition/Purchased Services as Reported within Expenditure Detail	Amount
Tuition Reported in General Fund Expenditures 1000-560	6,560,320.57
Purchased Services in General Fund Expenditures 1000-594 and 1000-597	1,010.60
Section 1 Total	\$6,561,331.17

Section 2: Tuition Paid to Institution Types During Fiscal Year	Tuition Paid For Nonspecial Education	Tuition Paid For Special Education	Total
1 1306 Institutions			
2 Institutionalized Children's Programs			
3 Juveniles Incarcerated in Adult Facilities			
4 Residential Treatment Facilities			
5 Other Local Education Agencies	175,116.16	394,824.84	569,941.00
6 Brick and Mortar Charter Schools	37,909.15	74,843.28	112,752.43
7 Cyber Charter Schools	1,193,702.53	1,111,344.59	2,305,047.12
8 Career and Technology Centers	2,217,252.59		2,217,252.59
9 Approved Private Schools		108,995.98	108,995.98
10 PA Chartered Schools for the Deaf and Blind			
11 Private Residential Rehabilitative Institutions	18,769.18	130,433.87	149,203.05
12 Juvenile Detention Centers		12,362.39	12,362.39
13 Special Program Jointures			
14 Other Tuition Not Included Elsewhere In This Section	73,430.00	1,012,346.61	1,085,776.61
Section 2 Total	\$3,716,179.61	\$2,845,151.56	\$6,561,331.17

1 .	<u>Student Transportation Services for Educational Field Trips</u>	14,909.96
2 .	<u>Student Transportation Services for Student Activities</u>	113,055.05
3 .	<u>Rental of Vehicles for Student Transportation Services</u>	
4 .	<u>Capital Reserve Funds</u>	

Include only district-owned transportation expenditures paid from State or local money.
DO NOT include federal expenditures or payments to contract service providers.
Contracted transportation services should not be recorded on this schedule.

LEA : 113365203 Penn Manor SD

Printed 12/12/2025 12:29:30 PM

Food Service / Cafeteria Operations Fund (51)

3000 Operation of Non-Instructional Services		Total
100	<u>Personnel Services – Salaries</u>	
100	Personnel Services – Salaries	986,354.00
Total Personnel Services – Salaries		\$986,354.00
200	<u>Personnel Services – Employee Benefits</u>	
210	Group Insurance – Contracted Provider	1,925.00
220	Social Security Contributions	73,443.00
230	PSERS Retirement Contributions	323,022.00
260	Workers' Compensation	5,725.00
270	Group Insurance – Self-Insurance	391,088.00
299	All Other Employee Benefits	68,919.00
Total Personnel Services – Employee Benefits		\$864,122.00
300	<u>Purchased Professional and Technical Services</u>	
330	Other Professional Services	8,574.00
Total Purchased Professional and Technical Services		\$8,574.00
400	<u>Purchased Property Services</u>	
410	Cleaning Services	5,000.00
430	Repairs and Maintenance Services	72,749.00
460	Extermination Services	3,201.00
Total Purchased Property Services		\$80,950.00
500	<u>Other Purchased Services</u>	
580	Travel	2,319.00
Total Other Purchased Services		\$2,319.00
600	<u>Supplies</u>	
610	General Supplies	133,599.00
630	Food	1,800,219.00
650	Supplies & Fees – Technology Related	15,362.00
Total Supplies		\$1,949,180.00
700	<u>Property</u>	
740	Depreciation	49,346.00
Total Property		\$49,346.00
800	<u>Other Objects</u>	
810	Dues and Fees	685.00
890	Miscellaneous Expenditures	16,657.00
Total Other Objects		\$17,342.00
Total 3000 Operation of Non-Instructional Services		\$3,958,187.00

LEA : 113365203 Penn Manor SD

Printed 12/12/2025 12:29:30 PM

Food Service / Cafeteria Operations Fund (51)

3100 Food Services	<u>Elementary</u>	<u>Secondary</u>	<u>Federal</u>	<u>Total</u>
100 <u>Personnel Services – Salaries</u>				
100 Personnel Services – Salaries				986,354.00
Total Personnel Services – Salaries				\$986,354.00
200 <u>Personnel Services – Employee Benefits</u>				
210 Group Insurance – Contracted Provider				1,925.00
220 Social Security Contributions				73,443.00
230 PSERS Retirement Contributions				323,022.00
260 Workers' Compensation				5,725.00
270 Group Insurance – Self-Insurance				391,088.00
299 All Other Employee Benefits				68,919.00
Total Personnel Services – Employee Benefits				\$864,122.00
300 <u>Purchased Professional and Technical Services</u>				
330 Other Professional Services				8,574.00
Total Purchased Professional and Technical Services				\$8,574.00
400 <u>Purchased Property Services</u>				
410 Cleaning Services				5,000.00
430 Repairs and Maintenance Services				72,749.00
460 Extermination Services				3,201.00
Total Purchased Property Services				\$80,950.00
500 <u>Other Purchased Services</u>				
580 Travel				2,319.00
Total Other Purchased Services				\$2,319.00
600 <u>Supplies</u>				
610 General Supplies				133,599.00
630 Food				1,800,219.00
650 Supplies & Fees – Technology Related				15,362.00
Total Supplies				\$1,949,180.00
700 <u>Property</u>				
740 Depreciation				49,346.00
Total Property				\$49,346.00
800 <u>Other Objects</u>				
810 Dues and Fees				685.00
890 Miscellaneous Expenditures				16,657.00
Total Other Objects				\$17,342.00
Total 3100 Food Services				\$3,958,187.00

	<u>Food Service(51)</u>	<u>Child Care Operations(52)</u>	<u>Other Enterprise(58)</u>	<u>Internal Service(60)</u>	<u>Total</u>
3000 <u>Operation of Non-Instructional Services</u>					
3100 Food Services	3,958,187.00				3,958,187.00
Total Operation of Non-Instructional Services	\$3,958,187.00				\$3,958,187.00
TOTAL ACTUAL EXPENDITURES & OTHER FINANCING USES	\$3,958,187.00				\$3,958,187.00

LEA : 113365203 Penn Manor SD

Printed 12/12/2025 12:29:46 PM

Fund	School	School Number	Local Personnel	Local Nonpersonnel	State Personnel	State Nonpersonnel	Federal Personnel	Federal Nonpersonnel	Total	Explanation
10										
	Central Manor El Sch	7141	4,997,663.00	1,034,831.00	3,696,969.00	558,442.00	0.01	26,416.00	10,314,321.01	
	Conestoga El Sch	2516	2,429,078.00	512,304.00	1,310,842.00	276,463.00	0.01	12,839.00	4,541,526.01	
	Eshleman El Sch	2629	2,823,014.00	578,847.00	1,523,428.00	312,372.00	0.01	14,921.00	5,252,582.01	
	Hambright El Sch	2626	4,628,475.00	1,003,150.00	2,497,737.00	541,345.00	573,070.00	28,462.00	9,272,239.00	
	Letort El Sch	2627	2,658,855.00	556,284.00	1,434,840.00	300,196.00	0.01	14,054.00	4,964,229.01	
	Manor Middle School	7410	3,757,016.00	861,296.00	2,027,458.00	464,794.00	129,414.00	20,858.00	7,260,836.00	
	Martic El Sch	2628	2,396,301.00	523,821.00	1,293,154.00	282,678.00	0.01	12,666.00	4,508,620.01	
	Marticville MS	5238	3,005,613.00	749,786.00	1,621,967.00	404,619.00	0.01	16,451.00	5,798,436.01	
	Penn Manor HS	2633	15,334,218.00	3,464,644.00	8,275,048.00	1,869,681.00	74,671.00	80,651.00	29,098,913.00	
	Pequea El Sch	2634	2,765,538.00	587,759.00	1,492,411.00	317,182.00	229,049.00	17,589.00	5,409,528.00	
Total			44,795,771.00	9,872,722.00	25,173,854.00	5,327,772.00	1,006,204.06	244,907.00	86,421,230.06	