

LEA Name : Penn Manor SD
Address : PO Box 1001
Millersville , PA 17551

County : Lancaster
AUN Number : 113365203
LEA Type : SD

Annual Financial Report Accuracy Certification Statement

For Fiscal Year Ending
6/30/2023

Pennsylvania Department of Education

&

Office of Comptroller Operations

PDE-2056: Intermediate Unit

PDE-2057: School District, AVTS/CTC, Charter School,
and Special Program Jointure

CERTIFICATION: By signing this page I agree that the electronic data submitted is a complete and accurate statement of the financial operations and status of the local education agency for the fiscal year. It has been prepared in accordance with generally accepted accounting principles and established Commonwealth of PA reporting guidelines.



Chief School Administrator Signature

11/27/23
Date



Board Secretary Signature

11/27/23
Date

Daniel Forry

Contact Person

dan.forry@pennmanor.net

Contact Person E-mail Address

(717)872-9500

Ext :2237

Contact Person Telephone Number

(717)872-9505

Contact Person Fax Number

Audit Certification
Annual Financial Report:
For Fiscal Year Ending **6/30/2023**
(Pursuant to PA School Code Section 218(b))

LEA Name : Penn Manor SD
AUN Number : 113365203
County : Lancaster

Audit Certification Due: 12/31/2023

This certification is applicable to the Annual Financial Report data submitted through the Consolidated Financial Reporting System (CFRS).

CERTIFICATION: By signing this page I agree that the financial statements of the school have been properly audited as noted above pursuant to Article XXIV, and in the auditor's professional opinion, the Annual Financial Report (PDE-2057) submitted through CFRS is materially consistent with the audited financial statements.

Chief School Administrator




Signature

Date

11/27/23

Board Secretary



Signature

Date

11/27/23

Daniel Forry

Contact Person

dan.forry@pennmanor.net

Contact Person E-mail Address

(717)872-9500

Ext :2237

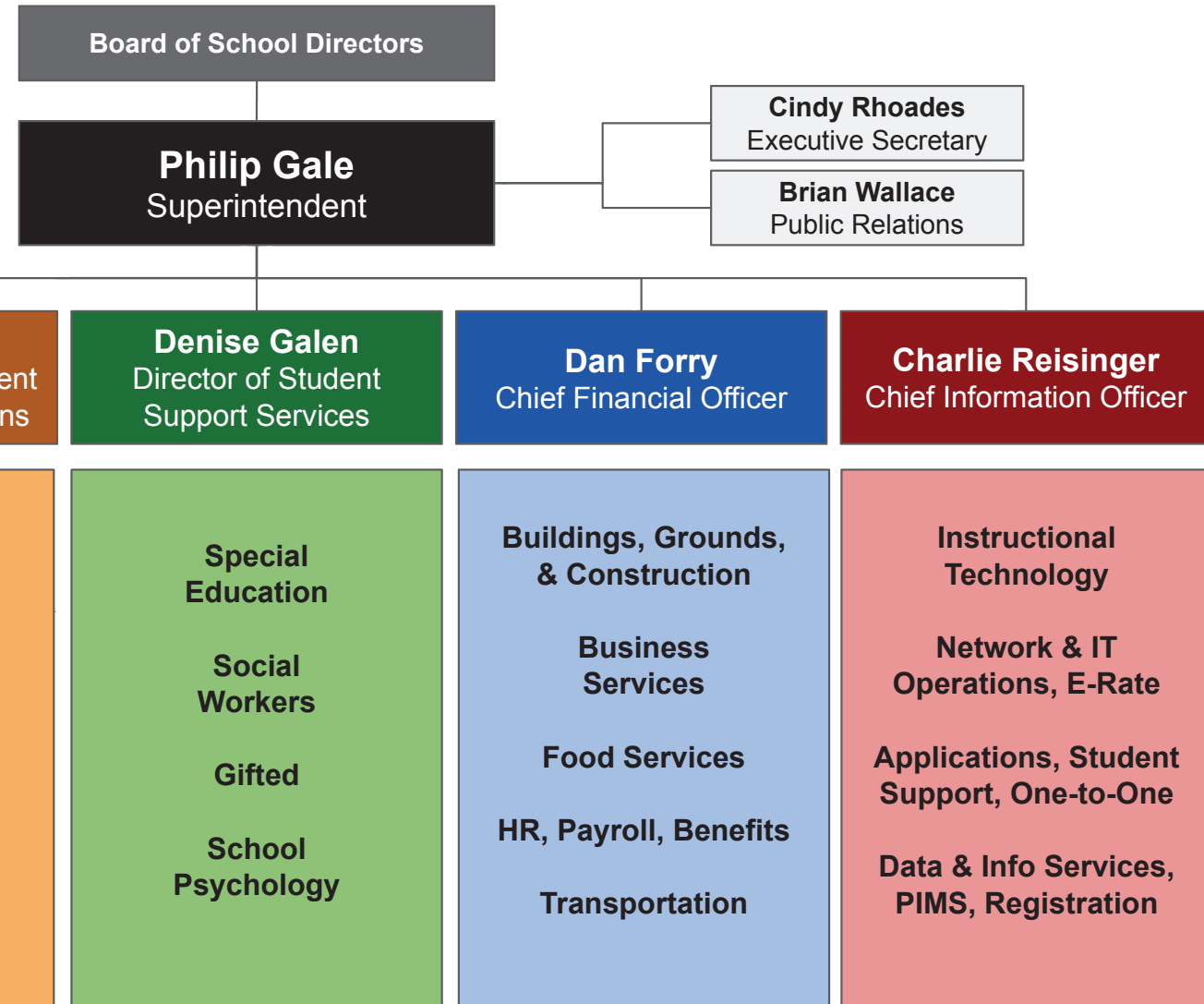
Contact Person Telephone Number

(717)872-9505

Contact Person Fax Number

Penn Manor School District Executive Leadership

November 2023





Book	Policy Manual
Section	600 Finances
Title	GASB Statement 34
Code	622
Status	Active
Adopted	September 13, 2010

Purpose

The Board recognizes the need to implement the required accounting and financial reporting standards stipulated by the Pennsylvania Department of Education.

The primary objectives of implementing the GASB Statement 34 are to assure compliance with state requirements, and properly account for both the financial and economic resources of the district.

Authority

Participation of the school district in any such activity shall be in accordance with Board policy.[\[1\]](#)[\[2\]](#)

Delegation of Responsibility

The responsibility to coordinate the compilation and preparation of all information necessary to implement this policy shall be the Superintendent's or designee's.

The designated individual shall be responsible for implementing the necessary procedures to establish and maintain a fixed asset inventory, including depreciation schedules. Depreciation shall be computed on a straight-line basis over the useful lives of the assets, using an averaging convention. Normal maintenance and repairs shall be charged to expense as incurred; major renewals and betterments that materially extend the life or increase the value of the asset shall be capitalized. A schedule of accumulated depreciation shall be consistent from year to year. The basis for depreciation, including groups of assets and useful lives, shall be in writing and submitted for review to the independent auditors.

The Business Manager shall prepare the required Management Discussion and Analysis (MD&A). The MD&A shall be in the form required by GASB Statement 34 and shall be submitted to the Board for approval, prior to publication.

Prior to submission of the MD&A for Board approval, the district's independent auditors shall review the MD&A, in accordance with SAS No. 52, "Required Supplementary Information".

Guidelines

In order to associate debt with acquired assets and to avoid net asset deficits, any asset that has been acquired with debt proceeds shall be capitalized, regardless of the cost of the asset. The asset life of these assets shall be considered relative to the time of the respective debt amortizations.

For all other assets not acquired by debt proceeds, the dollar value of any single item for inclusion in the fixed assets accounts shall be not less than \$5,000.

The capitalization threshold shall be set at a level that will capture at least eighty percent (80%) of all fixed assets.

The assets listed below do not normally individually meet capitalization threshold criteria:

1. Library books.
2. Classroom texts.
3. Computer equipment.
4. Classroom furniture.

These asset category costs shall be capitalized and depreciated as groups when that group's acquisition cost exceeds the capitalization threshold in any given fiscal year.

For group asset depreciation purposes, the estimated useful life of the group may be based on the weighted average or simple average of the useful life of individual items, or on an assessment of the life of the group as a whole. Periodically, the district shall review the estimated life of groups of assets and adjust the remaining depreciation life of the group.

Assets that fall below the capitalization threshold for GASB 34 reporting purposes may still be significant for insurance, warranty service, and obsolescence/replacement policy tracking purposes. The district may record and maintain these non-GASB 34 asset inventories in subsidiary ledgers.

Legal

1. 24 P.S. 218

2. 24 P.S. 613

Governmental Accounting Standards Board, Statement No. 34

[622-AR-0-GASBStmt34.pdf \(14 KB\)](#)

[622-AR-1-ValuationOfCapAssets.pdf \(17 KB\)](#)

[622-AR-2-RecordOfCapAssets.pdf \(19 KB\)](#)

[622-AR-3-CapAsetTypeUsefulLifeChrt.pdf \(13 KB\)](#)

[622-AR-4FixedAssetAddForm.pdf \(10 KB\)](#)

[622-AR-5-FixedAssetChangeForm.pdf \(9 KB\)](#)

<u>Val Number</u>	<u>Description</u>	<u>Justification</u>
30116	Revenue Detail: A large amount has been reported as Earnings on Investments in Fund 32, account 6500, which should only include interest earnings of this fund. Correct or provide a brief explanation of the revenue reported. Revenue Detail 6500, Fund 32: \$171,371.00	Significant increases in earnings rate during the fiscal year generated higher than expected interest earnings. The reported revenue amount includes interest earnings generated by balances in Fund 32 only.

LEA : 113365203 Penn Manor SD

Printed 11/28/2023 4:24:26 PM

Amounts Expressed in Whole Dollars		<u>General Fund</u> <u>(10)</u>	<u>Student Sponsored</u> <u>Activity Fund</u> <u>(21)</u>	<u>Public Purpose Trust</u> <u>(27)</u>	<u>Other Compt Approved</u> <u>(28)</u>	<u>Athletic / Activity</u> <u>(29)</u>
Assets And Deferred Outflows Of Resources						
Assets						
0100	Cash and Cash Equivalents	3,430,074				
0110	Investments	23,275,647				
0120	Taxes Receivable	2,103,698				
0130	Due From Other Funds	79,787				
0141	Due From Other Governments					
0142	State Revenue Receivable	3,035,780				
0143	Federal Revenue Receivable	1,627,910				
0145	Other Intergovernmental Revenue Receivable	1,213,582				
0146	Due from Primary Government					
0147	Due from Component Unit					
0150	Other Receivables	605,647				
0170	Inventories					
0180	Prepaid Expenses (Expenditures)					
0190	Other Current Assets					
Total Assets		\$35,372,125				
0910	Deferred Outflows of Resources					
Total Assets And Deferred Outflows Of Resources		\$35,372,125				

LEA : 113365203 Penn Manor SD

Printed 11/28/2023 4:24:26 PM

Amounts Expressed in Whole Dollars		<u>Capital Reserve (690.</u> <u>1850)</u> <u>(31)</u>	<u>Capital Reserve (1431)</u> <u>(32)</u>	<u>Other Capital Projects</u> <u>Fund</u> <u>(39)</u>	<u>Debt Service</u> <u>(40)</u>	<u>Permanent</u> <u>(90)</u>
Assets And Deferred Outflows Of Resources						
Assets						
0100	Cash and Cash Equivalents					
0110	Investments		2,596,993			
0120	Taxes Receivable					
0130	Due From Other Funds		548,117			
0141	Due From Other Governments					
0142	State Revenue Receivable					
0143	Federal Revenue Receivable					
0145	Other Intergovernmental Revenue Receivable					
0146	Due from Primary Government					
0147	Due from Component Unit					
0150	Other Receivables					
0170	Inventories					
0180	Prepaid Expenses (Expenditures)					
0190	Other Current Assets					
Total Assets			\$3,145,110			
0910	Deferred Outflows of Resources					
Total Assets And Deferred Outflows Of Resources			\$3,145,110			

LEA : 113365203 Penn Manor SD

Printed 11/28/2023 4:24:26 PM

Amounts Expressed in Whole Dollars		<u>Total Governmental</u>
		<u>Funds</u>
Assets And Deferred Outflows Of Resources		
Assets		
0100	Cash and Cash Equivalents	3,430,074
0110	Investments	25,872,640
0120	Taxes Receivable	2,103,698
0130	Due From Other Funds	627,904
0141	Due From Other Governments	
0142	State Revenue Receivable	3,035,780
0143	Federal Revenue Receivable	1,627,910
0145	Other Intergovernmental Revenue Receivable	1,213,582
0146	Due from Primary Government	
0147	Due from Component Unit	
0150	Other Receivables	605,647
0170	Inventories	
0180	Prepaid Expenses (Expenditures)	
0190	Other Current Assets	
Total Assets		\$38,517,235
0910	Deferred Outflows of Resources	
Total Assets And Deferred Outflows Of Resources		\$38,517,235

LEA : 113365203 Penn Manor SD

Printed 11/28/2023 4:24:26 PM

Amounts Expressed in Whole Dollars	<u>General Fund</u> <u>(10)</u>	<u>Student Sponsored</u> <u>Activity Fund</u> <u>(21)</u>	<u>Public Purpose Trust</u> <u>(27)</u>	<u>Other Compt Approved</u> <u>(28)</u>	<u>Athletic / Activity</u> <u>(29)</u>
Liabilities And Deferred Inflows Of Resources And Fund Balances					
Liabilities					
0400 Due to Other Funds	549,692				
0411 Due to Other Governments					
0412 Due to Primary Government					
0413 Due to Component Unit					
0420 Accounts Payable	1,971,964				
0430 Contracts Payable					
0440 Current Portion of Long-Term Debt					
0450 Short-Term Payables					
0461 Accrued Salaries and Benefits	9,707,528				
0462 Payroll Deductions and Withholding	398,264				
0480 Unearned Revenues	9,380				
0490 Other Current Liabilities					
Total Liabilities	\$12,636,828				
0950 Deferred Inflows of Resources	502,372				
Fund Balances					
0810 Nonspendable Fund Balance					
0820 Restricted Fund Balance	56,226				
0830 Committed Fund Balance	15,000,929				
0840 Assigned Fund Balance					
0850 Unassigned Fund Balance	7,175,770				
Total Fund Balances	\$22,232,925				
Total Liabilities, Deferred Inflows Of Resources And Fund Balances	\$35,372,125				

LEA : 113365203 Penn Manor SD

Printed 11/28/2023 4:24:26 PM

Amounts Expressed in Whole Dollars		<u>Capital Reserve (690.</u> <u>1850)</u> <u>(31)</u>	<u>Capital Reserve (1431)</u> <u>(32)</u>	<u>Other Capital Projects</u> <u>Fund</u> <u>(39)</u>	<u>Debt Service</u> <u>(40)</u>	<u>Permanent</u> <u>(90)</u>
Liabilities And Deferred Inflows Of Resources And Fund Balances						
Liabilities						
0400	Due to Other Funds					
0411	Due to Other Governments					
0412	Due to Primary Government					
0413	Due to Component Unit					
0420	Accounts Payable		1,452,402			
0430	Contracts Payable					
0440	Current Portion of Long-Term Debt					
0450	Short-Term Payables					
0461	Accrued Salaries and Benefits					
0462	Payroll Deductions and Withholding					
0480	Unearned Revenues					
0490	Other Current Liabilities					
Total Liabilities			\$1,452,402			
0950	Deferred Inflows of Resources					
Fund Balances						
0810	Nonspendable Fund Balance					
0820	Restricted Fund Balance		1,692,708			
0830	Committed Fund Balance					
0840	Assigned Fund Balance					
0850	Unassigned Fund Balance					
Total Fund Balances			\$1,692,708			
Total Liabilities, Deferred Inflows Of Resources And Fund Balances			\$3,145,110			

LEA : 113365203 Penn Manor SD

Printed 11/28/2023 4:24:26 PM

Amounts Expressed in Whole Dollars		<u>Total Governmental</u> <u>Funds</u>
Liabilities And Deferred Inflows Of Resources And Fund Balances		
Liabilities		
0400 Due to Other Funds		549,692
0411 Due to Other Governments		
0412 Due to Primary Government		
0413 Due to Component Unit		
0420 Accounts Payable		3,424,366
0430 Contracts Payable		
0440 Current Portion of Long-Term Debt		
0450 Short-Term Payables		
0461 Accrued Salaries and Benefits		9,707,528
0462 Payroll Deductions and Withholding		398,264
0480 Unearned Revenues		9,380
0490 Other Current Liabilities		
Total Liabilities		\$14,089,230
0950 Deferred Inflows of Resources		502,372
Fund Balances		
0810 Nonspendable Fund Balance		
0820 Restricted Fund Balance		1,748,934
0830 Committed Fund Balance		15,000,929
0840 Assigned Fund Balance		
0850 Unassigned Fund Balance		7,175,770
Total Fund Balances		\$23,925,633
Total Liabilities, Deferred Inflows Of Resources And Fund Balances		\$38,517,235

Amounts Expressed in Whole Dollars	<u>General Fund</u> <u>(10)</u>	<u>Student Sponsored</u> <u>Activity Fund</u> <u>(21)</u>	<u>Public Purpose Trust</u> <u>(27)</u>	<u>Other Compt Approved</u> <u>(28)</u>	<u>Athletic / Activity</u> <u>(29)</u>
Revenues					
6000 Revenue from Local Sources	66,918,398				
7000 Revenue from State Sources	31,236,190				
8000 Revenue from Federal Sources	2,635,698				
Total Revenues	\$100,790,286				
Expenditures					
1000 Instruction	61,017,710				
2000 Support Services	26,643,152				
3000 Operation of Non-Instructional Services	1,742,138				
4000 Facilities Acquisition, Construction and Improvement Services	2,500				
5110 Debt Service					
5130 Refund of Prior Year Revenues / Receipts					
5140 Leases and Other Right-to-Use Arrangements					
Total Expenditures	\$89,405,500				
Excess (Deficiency) Of Revenues Over Expenditures	\$11,384,786				
Other Financing Sources (Uses)					
9110 Face Value of Bonds Issued					
9120 Proceeds from Refunding of Bonds					
9130 Bond Premiums					
9200 Proceeds from Extended Term Financing, Leases, and Other Right-to-Use Arrangements					
9300 Interfund Transfers - IN					
9400 Sale of or Compensation for Loss of Fixed Assets	6,310				
9710 Transfers from Component Units					
9720 Transfers from Primary Governments					
9910 Other Financing Sources Not Listed in the 9000 Series					
9990 Insurance Recoveries	52,748				
5120 Debt Service – Refunded Bonds					
5150 Bond Discounts					
5200 Interfund Transfers – Out	12,938,508				
5300 Transfers Out to Component Units/Primary Governments					
Total Other Financing Sources (Uses)	(\$12,879,450)				

Amounts Expressed in Whole Dollars		<u>Capital Reserve (690.1850)</u> <u>(31)</u>	<u>Capital Reserve (1431)</u> <u>(32)</u>	<u>Other Capital Projects</u> <u>Fund</u> <u>(39)</u>	<u>Debt Service</u> <u>(40)</u>	<u>Permanent</u> <u>(90)</u>
Revenues						
6000	Revenue from Local Sources		171,371			
7000	Revenue from State Sources					
8000	Revenue from Federal Sources					
Total Revenues			\$171,371			
Expenditures						
1000	Instruction					
2000	Support Services		118,129			
3000	Operation of Non-Instructional Services					
4000	Facilities Acquisition, Construction and Improvement Services		6,767,643			
5110	Debt Service				9,138,508	
5130	Refund of Prior Year Revenues / Receipts					
5140	Leases and Other Right-to-Use Arrangements					
Total Expenditures			\$6,885,772		\$9,138,508	
Excess (Deficiency) Of Revenues Over Expenditures			(\$6,714,401)		(\$9,138,508)	
Other Financing Sources (Uses)						
9110	Face Value of Bonds Issued					
9120	Proceeds from Refunding of Bonds					
9130	Bond Premiums					
9200	Proceeds from Extended Term Financing, Leases, and Other Right-to-Use Arrangements					
9300	Interfund Transfers - IN		3,800,000		9,138,508	
9400	Sale of or Compensation for Loss of Fixed Assets					
9710	Transfers from Component Units					
9720	Transfers from Primary Governments					
9910	Other Financing Sources Not Listed in the 9000 Series					
9990	Insurance Recoveries					
5120	Debt Service – Refunded Bonds					
5150	Bond Discounts					
5200	Interfund Transfers – Out					
5300	Transfers Out to Component Units/Primary Governments					
Total Other Financing Sources (Uses)			\$3,800,000		\$9,138,508	

Amounts Expressed in Whole Dollars		<u>Total Governmental Funds</u>
Revenues		
6000	Revenue from Local Sources	67,089,769
7000	Revenue from State Sources	31,236,190
8000	Revenue from Federal Sources	2,635,698
Total Revenues		\$100,961,657
Expenditures		
1000	Instruction	61,017,710
2000	Support Services	26,761,281
3000	Operation of Non-Instructional Services	1,742,138
4000	Facilities Acquisition, Construction and Improvement Services	6,770,143
5110	Debt Service	9,138,508
5130	Refund of Prior Year Revenues / Receipts	
5140	Leases and Other Right-to-Use Arrangements	
Total Expenditures		\$105,429,780
Excess (Deficiency) Of Revenues Over Expenditures		(\$4,468,123)
Other Financing Sources (Uses)		
9110	Face Value of Bonds Issued	
9120	Proceeds from Refunding of Bonds	
9130	Bond Premiums	
9200	Proceeds from Extended Term Financing, Leases, and Other Right-to-Use Arrangements	
9300	Interfund Transfers - IN	12,938,508
9400	Sale of or Compensation for Loss of Fixed Assets	6,310
9710	Transfers from Component Units	
9720	Transfers from Primary Governments	
9910	Other Financing Sources Not Listed in the 9000 Series	
9990	Insurance Recoveries	52,748
5120	Debt Service – Refunded Bonds	
5150	Bond Discounts	
5200	Interfund Transfers – Out	12,938,508
5300	Transfers Out to Component Units/Primary Governments	
Total Other Financing Sources (Uses)		\$59,058

Amounts Expressed in Whole Dollars		<u>General Fund</u> <u>(10)</u>	<u>Student Sponsored</u> <u>Activity Fund</u> <u>(21)</u>	<u>Public Purpose Trust</u> <u>(27)</u>	<u>Other Compt Approved</u> <u>(28)</u>	<u>Athletic / Activity</u> <u>(29)</u>
Special And Extraordinary Items						
9920	Special Items – Gains					
9930	Extraordinary Items – Gains					
5520	Special Items – Losses					
5530	Extraordinary Items – Losses					
Net Change In Fund Balances		(\$1,494,664)				
Fund Balance						
0001	Fund Balance - Beginning of Fiscal Year	23,727,588				
Fund Balance - End Of Year		\$22,232,924				

Amounts Expressed in Whole Dollars		<u>Capital Reserve (690.</u> <u>1850)</u> <u>(31)</u>	<u>Capital Reserve (1431)</u> <u>(32)</u>	<u>Other Capital Projects</u> <u>Fund</u> <u>(39)</u>	<u>Debt Service</u> <u>(40)</u>	<u>Permanent</u> <u>(90)</u>
Special And Extraordinary Items						
9920	Special Items – Gains					
9930	Extraordinary Items – Gains					
5520	Special Items – Losses					
5530	Extraordinary Items – Losses					
Net Change In Fund Balances			(\$2,914,401)			
Fund Balance						
0001	Fund Balance - Beginning of Fiscal Year		4,607,110			
Fund Balance - End Of Year			\$1,692,709			

Amounts Expressed in Whole Dollars		<u>Total Governmental Funds</u>
Special And Extraordinary Items		
9920	Special Items – Gains	
9930	Extraordinary Items – Gains	
5520	Special Items – Losses	
5530	Extraordinary Items – Losses	
Net Change In Fund Balances		(\$4,409,065)
Fund Balance		
0001	Fund Balance - Beginning of Fiscal Year	28,334,698
Fund Balance - End Of Year		\$23,925,633

LEA : 113365203 Penn Manor SD

Printed 11/28/2023 4:24:36 PM

Amounts Expressed in Whole Dollars	<u>Food Service</u> <u>(51)</u>	<u>Child Care</u> <u>Operations</u> <u>(52)</u>	<u>Other Enterprise</u> <u>(58)</u>	<u>TOTAL</u>	<u>Internal Service</u> <u>(60)</u>
Assets And Deferred Outflows Of Resources					
Current Assets					
0100 Cash and Cash Equivalents	1,859,410			1,859,410	
0110 Investments	588,069			588,069	
0130 Due From Other Funds	1,575			1,575	
0141 Due From Other Governments					
0142 State Revenue Receivable					
0143 Federal Revenue Receivable					
0146 Due from Primary Government					
0147 Due from Component Unit					
0150 Other Receivables	7,683			7,683	
0170 Inventories	50,736			50,736	
0180 Prepaid Expenses (Expenditures)					
0190 Other Current Assets					
Total Current Assets	\$2,507,473			\$2,507,473	
Noncurrent Assets					
0211 Land					
0212 Site Improvements (Net)					
0220 Buildings and Building Improvements (Net)					
0230 Tangible Property and Intangible Right-To-Use Assets (Net)	358,564			358,564	
0250 Construction in Progress					
0260 Long Term Prepayments					
0290 Other Noncurrent Assets					
Total Noncurrent Assets	\$358,564			\$358,564	
0910 Deferred Outflows of Resources					
Total Assets And Deferred Outflows Of Resources	\$2,866,037			\$2,866,037	

LEA : 113365203 Penn Manor SD

Printed 11/28/2023 4:24:36 PM

Amounts Expressed in Whole Dollars	<u>Food Service</u> <u>(51)</u>	<u>Child Care</u> <u>Operations</u> <u>(52)</u>	<u>Other Enterprise</u> <u>(58)</u>	<u>TOTAL</u>	<u>Internal Service</u> <u>(60)</u>
Liabilities And Deferred Inflows Of Resources And Net Position					
Current Liabilities					
0400 Due to Other Funds	79,609			79,609	
0411 Due to Other Governments					
0413 Due to Component Unit					
0420 Accounts Payable	1,010			1,010	
0430 Contracts Payable					
0440 Current Portion of Long-Term Debt	2,399			2,399	
0450 Short-Term Payables					
0461 Accrued Salaries and Benefits					
0462 Payroll Deductions and Withholding					
0480 Unearned Revenues	19,842			19,842	
0490 Other Current Liabilities					
Total Current Liabilities	\$102,860			\$102,860	
Noncurrent Liabilities					
0510 Bonds Payable					
0520 Extended-Term Financing Agreements Payable					
0530 Lease and Other Right-To-Use Obligations					
0540 Accumulated Compensated Absences	21,586			21,586	
0550 Authority Lease Obligations					
0560 Other Post-Employment Benefits (OPEB)					
0570 Net Pension Liability					
0599 Other Noncurrent Liabilities					
Total Noncurrent Liabilities	\$21,586			\$21,586	
Total Liabilities	\$124,446			\$124,446	
0950 Deferred Inflows of Resources					
Net Position					
0791 Net Investment in Capital Assets	358,564			358,564	
0008 Restricted Net Position (0792 – 0798)					
0799 Unrestricted Net Position	2,383,027			2,383,027	
Total Net Position	\$2,741,591			\$2,741,591	
Total Liabilities And Deferred Inflows Of Resources And Net Position	\$2,866,037			\$2,866,037	

Amounts Expressed in Whole Dollars	Food Service (51)	Child Care Operations (52)	Other Enterprise (58)	TOTAL	Internal Service (60)
Operating Revenues					
6600 Food Service Revenue	840,743			840,743	
0071 Charges for Services					
0072 Other Operating Revenue	50,618			50,618	
Total Operating Revenues	\$891,361			\$891,361	
Operating Expenses					
100 Personnel Services – Salaries	719,655			719,655	
200 Personnel Services – Employee Benefits	442,883			442,883	
300 Purchased Professional and Technical Services	600			600	
400 Purchased Property Services	56,380			56,380	
500 Other Purchased Services	89,095			89,095	
600 Supplies	1,701,744			1,701,744	
740 Depreciation	39,310			39,310	
770 Amortization Expense					
810 Dues and Fees	295			295	
880 Refunds of Prior Years' Receipts					
890 Miscellaneous Expenditures	364			364	
Total Operating Expenses	\$3,050,326			\$3,050,326	
Operating Income (Loss)	(\$2,158,965)			(\$2,158,965)	
Non Operating Revenues (Expenses)					
6500 Earnings on Investments	55,094			55,094	
6830 Federal Revenue from Intermediary Sources					
6920 Contributions and Donations from Private Sources					
6930 Gains or Losses on Sale of Fixed Assets					
6991 Refunds of a Prior Year Expenditure					
7000 Revenue from State Sources	438,110			438,110	
8000 Revenue from Federal Sources	2,218,379			2,218,379	
9990 Insurance Recoveries					
820 Claims and Judgments Against the LEA					
830 Interest					
TOTAL Non Operating Revenues (Expenses)	\$2,711,583			\$2,711,583	
Income (Loss) Before Contributions And Transfers	\$552,618			\$552,618	

Amounts Expressed in Whole Dollars	<u>Food Service</u> <u>(51)</u>	<u>Child Care Operations</u> <u>(52)</u>	<u>Other Enterprise</u> <u>(58)</u>	<u>TOTAL</u>	<u>Internal Service</u> <u>(60)</u>
Contributions, Transfers, and Special and Extraordinary Items					
5200 Interfund Transfers – Out					
5300 Transfers Out to Component Units/Primary Governments					
5520 Special Items – Losses					
5530 Extraordinary Items – Losses					
9300 Interfund Transfers - IN					
9500 Capital Contributions					
9700 Transfers IN From Component Units/Primary Governments					
9920 Special Items – Gains					
9930 Extraordinary Items – Gains					
Change In Net Position	\$552,618			\$552,618	
0002 Net Position - Beginning of Fiscal Year	2,188,972			2,188,972	
0003 Accounting Changes / Residual Equity Transfers					
Net Position - End Of Year	\$2,741,590			\$2,741,590	

LEA : 113365203 Penn Manor SD

Printed 11/28/2023 4:24:48 PM

Amounts Expressed in Whole Dollars		<u>Food Service</u> <u>(51)</u>	<u>Child Care Operations</u> <u>(52)</u>	<u>Other Enterprise</u> <u>(58)</u>	<u>TOTAL</u>	<u>Internal Service(60)</u>
Cash Flows From Operating Activities						
0011	Cash Receipts From Users	884,894			884,894	
0012	Cash Receipts From Assessments Made to Other Funds					
0013	Cash Receipts From Earnings on Investments					
0014	Cash Receipts From Other Operating Revenue					
0015	Cash Payments To Employees For Services	1,220,316			1,220,316	
0016	Cash Payments For Insurance Claims					
0017	Cash Payments To Suppliers For Goods and Services	1,632,785			1,632,785	
0018	Cash Payments For Other Operating Expenses					
Net Cash Provided By (Used For) Operating Activities		(\$1,968,207)			(\$1,968,207)	
Cash Flows From Non-Capital Financing Activities						
0021	Receipts From Local Sources - 6000					
0022	Receipts From State Sources - 7000	438,110			438,110	
0023	Receipts From Federal Sources -8000	1,972,852			1,972,852	
0024	Notes and Loans Received (Repaid)					
0025	Interest Paid on Notes/Loans - 5100-830					
0026	Operating Transfers In (Out)/Residual Equity Trans					
0027	Operating Transfers In (Out) Primary Government / Comp Unit					
0028	Receipts From Refund of Prior Year Expenditures - 6991					
0029	Special and Extraordinary Gains (losses)					
0030	Receipts from Insurance Recoveries -9990					
Net Cash Prov By (Used for) Non-Capital Financing Activities		\$2,410,962			\$2,410,962	
Cash Flows From Capital and Related Financing Activities						
0031	Payments For Fac Acq, Const, and Imp - 4000	(87,759)			(87,759)	
0032	Gain / (Loss) on Sale of Fixed Assets - 6930					
0033	Proceeds From Extended Term Financing - 9200					
0034	Principal Paid on Financing Agreements					
0035	Interest Paid on Financing Agreements - 5100-830					
0036	(Inc) Dec in Contributed Capital					
Net Cash Prov By (Used for) Capital and Related Financing Activities		(\$87,759)			(\$87,759)	
Cash Flows From Investing Activities						
0041	Earnings on Investments - 6500	55,094			55,094	
0042	Purchase of Inv Securities / Deposits to Inv Pools	(2,866,390)			(2,866,390)	
0043	Receipts From Investment Pool Withdrawals	2,773,225			2,773,225	
0044	Proceeds from Sale and Maturity of Inv Securities					

LEA : 113365203 Penn Manor SD

Printed 11/28/2023 4:24:48 PM

0045 Loans Received (Paid)

Net Cash Prov By (Used for) Investing Activities	(\$38,071)	(\$38,071)
--	------------	------------

LEA : 113365203 Penn Manor SD

Printed 11/28/2023 4:24:48 PM

	<u>Food Service</u> <u>(51)</u>	<u>Child Care Operations</u> <u>(52)</u>	<u>Other Enterprise</u> <u>(58)</u>	<u>TOTAL</u>	<u>Internal Service</u> <u>(60)</u>
Net Increase (Decrease) in Cash Flows	316,925			316,925	
0004 Cash and Cash Equivalents Beginning of Year	1,542,485			1,542,485	
Cash and Cash Equivalents at Year End	\$1,859,410			\$1,859,410	
Reconciliation of Operating Income (Loss) To Net Cash Provided by (Used For) Operating Activities					
0005 Operating Income (Loss) per REP	(2,158,965)			(2,158,965)	
Adjustments					
0051 Depreciation and Net Amortization	39,310			39,310	
0052 Provision for Uncollectible Accounts					
0053 Other Adjustments	245,527			245,527	
Effect of Changes in Assets, Liabilities, Deferred Outflows and Deferred Inflows					
0054 (Inc) Dec In Accounts Receivable (0120-0150)	(8,041)			(8,041)	
0055 Advances to Other Funds					
0056 (Inc) Dec in Inventories (0170)	15,670			15,670	
0057 (Inc) Dec in Prepaid Expenses (0180)					
0058 (Inc) Dec in Other Current or Noncurrent Assets					
0064 Deferred Outflows (0910)					
0059 Inc (Dec) in Accounts Payable (0400-0450)	(66,909)			(66,909)	
0060 Inc (Dec) in Accrued Salaries/Benefits (0461)					
0065 Inc (Dec) in Net Pension Liabilities (0570)					
0066 Inc (Dec) in Other Postemp Benefit Oblig (0560)					
0061 Inc (Dec) in Payroll Deductions/Withholding (0462)					
0062 Inc (Dec) in Unearned Revenue (0480)	(34,799)			(34,799)	
0063 Inc (Dec) in Other Current or Noncurrent Liabilities					
0067 Deferred Inflows (0950)					
Total Adjustments	\$190,758			\$190,758	
Cash Provided By (Used for) Total	(\$1,968,207)			(\$1,968,207)	

COMBINED STATEMENT OF CASH FLOWS
SCHEDULE OF NONCASH INVESTING, CAPITAL, AND FINANCING ACTIVITIES

Explanation of Transaction and Balance Sheet Effect	Amount
Total	

LEA : 113365203 Penn Manor SD

Printed 11/28/2023 4:24:49 PM

Amounts Expressed in Whole Dollars		<u>Private Purpose Trust</u> <u>(71)</u>	<u>Investment Trust</u> <u>(72)</u>	<u>Pension Trust</u> <u>(73)</u>	<u>Student Activity Custodial</u> <u>(81)</u>
Assets And Deferred Outflows Of Resources					
Assets					
0100	Cash and Cash Equivalents				91,694
0110	Investments				47,456
0130	Due From Other Funds				
0140	Due from Other Governments, Primary Government and Component Units				
0150	Other Receivables				
0170	Inventories				
0180	Prepaid Expenses (Expenditures)				
0190	Other Current Assets				
0220	Buildings and Building Improvements (Net)				
0230	Tangible Property and Intangible Right-To-Use Assets (Net)				
Total Assets					\$139,150
0910	Deferred Outflows of Resources				
Total Assets And Deferred Outflows Of Resources					\$139,150

LEA : 113365203 Penn Manor SD

Printed 11/28/2023 4:24:49 PM

Amounts Expressed in Whole Dollars		<u>Other Custodial</u> <u>(89)</u>	<u>Fiduciary Component Units</u> <u>(98)</u>	<u>Total Fiduciary Funds</u>
Assets And Deferred Outflows Of Resources				
Assets				
0100	Cash and Cash Equivalents			91,694
0110	Investments			47,456
0130	Due From Other Funds			
0140	Due from Other Governments, Primary Government and Component Units			
0150	Other Receivables			
0170	Inventories			
0180	Prepaid Expenses (Expenditures)			
0190	Other Current Assets			
0220	Buildings and Building Improvements (Net)			
0230	Tangible Property and Intangible Right-To-Use Assets (Net)			
Total Assets				\$139,150
0910	Deferred Outflows of Resources			
Total Assets And Deferred Outflows Of Resources				\$139,150

LEA : 113365203 Penn Manor SD

Printed 11/28/2023 4:24:49 PM

Amounts Expressed in Whole Dollars		<u>Private Purpose Trust</u> <u>(71)</u>	<u>Investment Trust</u> <u>(72)</u>	<u>Pension Trust</u> <u>(73)</u>	<u>Student Activity Custodial</u> <u>(81)</u>
Liabilities, Deferred Inflows Of Resources And Net Position					
Liabilities					
0400	Due to Other Funds				
0410	Due to Other Governments, Primary Government and Component Units				
0420	Accounts Payable				5,421
0430	Contracts Payable				
0450	Short-Term Payables				
0460	Payroll Accruals and Withholdings				
0480	Unearned Revenues				
0490	Other Current Liabilities				
Total Liabilities					\$5,421
0950	Deferred Inflows of Resources				
Net Position					
0791	Net Investment in Capital Assets				
0009	Restricted Net Position (0792 – 0798)				133,729
0799	Unrestricted Net Position				
Total Net Position					\$133,729
Total Liabilities, Deferred Inflows Of Resources And Net Position					\$139,150

LEA : 113365203 Penn Manor SD

Printed 11/28/2023 4:24:49 PM

Amounts Expressed in Whole Dollars		<u>Other Custodial</u> <u>(89)</u>	<u>Fiduciary Component Units</u> <u>(98)</u>	<u>Total Fiduciary Funds</u>
Liabilities, Deferred Inflows Of Resources And Net Position				
Liabilities				
0400	Due to Other Funds			
0410	Due to Other Governments, Primary Government and Component Units			
0420	Accounts Payable			5,421
0430	Contracts Payable			
0450	Short-Term Payables			
0460	Payroll Accruals and Withholdings			
0480	Unearned Revenues			
0490	Other Current Liabilities			
Total Liabilities				\$5,421
0950	Deferred Inflows of Resources			
Net Position				
0791	Net Investment in Capital Assets			
0009	Restricted Net Position (0792 – 0798)			133,729
0799	Unrestricted Net Position			
Total Net Position				\$133,729
Total Liabilities, Deferred Inflows Of Resources And Net Position				\$139,150

LEA : 113365203 Penn Manor SD

Printed 11/28/2023 4:24:50 PM

Amounts Expressed in Whole Dollars	<u>Private Purpose Trust</u> <u>(71)</u>	<u>Investment Trust</u> <u>(72)</u>	<u>Pension Trust</u> <u>(73)</u>	<u>Student Activity</u> <u>Custodial</u> <u>(81)</u>	<u>Other Custodial</u> <u>(89)</u>	<u>Fiduciary Component</u> <u>Units</u> <u>(98)</u>
Additions						
0091 Gifts and Contributions				258,959		
0095 Net Investment Earnings						
0092 Other Additions						
Deductions						
0093 Scholarships Awarded						
0094 Other Deductions				265,593		
Change In Net Position				(\$6,634)		
0006 Net Position – Beginning of Fiscal Year				140,363		
0007 Net Position Held in Trust for Pension Benefits						
Net Position - End of Fiscal Year				\$133,729		

LEA : 113365203 Penn Manor SD

Printed 11/28/2023 4:24:50 PM

Amounts Expressed in Whole Dollars		<u>Total Fiduciary</u>
		<u>Funds</u>
Additions		
0091	Gifts and Contributions	258,959
0095	Net Investment Earnings	
0092	Other Additions	
Deductions		
0093	Scholarships Awarded	
0094	Other Deductions	265,593
Change In Net Position		(\$6,634)
0006	Net Position – Beginning of Fiscal Year	140,363
0007	Net Position Held in Trust for Pension Benefits	
Net Position - End of Fiscal Year		\$133,729

	Revenue Reported In Current Year	Current Year Tax Accrual	Prior Year Tax Accrual	Taxes Collected In Current Year
Revenue from Local Sources				
6111 Current Real Estate Taxes	54,395,029.06			54,395,029.06
6112 Interim Real Estate Taxes	273,986.18	20,274.00	7,617.00	261,329.18
6113 Public Utility Realty Taxes	57,525.69			57,525.69
6114 Payments in Lieu of Current Taxes - State / Local	204,486.67			204,486.67
6151 Current Act 511 Earned Income Taxes	6,677,089.35	1,325,664.00	1,288,129.00	6,639,554.35
6153 Current Act 511 Real Estate Transfer Taxes	960,790.11	94,307.00	110,278.00	976,761.11
6411 Delinquent Real Estate Taxes	813,130.59	158,236.00	176,723.00	831,617.59
6420 Delinquent Per Capita Taxes, Section 679	16.50			16.50
6440 Delinquent Local Enabling Taxes - Flat Rate Assessments	11.00			11.00
6500 Earnings on Investments	1,396,782.52			
6700 Revenues from LEA Activities	69,321.20			
6831 Federal Revenue Received from Other Pennsylvania Public LEAs	172,471.55			
6832 Federal IDEA Revenue Received as Pass Through	1,091,890.69			
6833 Federal ARP Act IDEA Revenue Received as Pass Through	134,191.00			
6910 Rentals	56,733.89			
6920 Contributions and Donations from Private Sources	6,180.75			
6942 Summer School Tuition	300.00			
6944 Receipts from Other LEAs in Pennsylvania - Education	148,258.31			
6991 Refunds of a Prior Year Expenditure	1,983.17			
6999 Other Revenues Not Specified Above	458,219.98			
TOTAL Revenue from Local Sources	\$66,918,398.21	\$1,598,481.00	\$1,582,747.00	\$63,366,331.15

	Revenue Reported In Current Year			
<u>Revenue from State Sources</u>				
7111 Basic Education Funding-Formula	13,656,546.66			
7112 Basic Education Funding-Social Security	1,439,592.75			
7160 Tuition for Orphans Subsidy	155,866.45			
7220 Vocational Education	76,296.68			
7250 Migratory Children	1,360.00			
7271 Special Education funds for School-Aged Pupils	3,513,250.73			
7311 Pupil Transportation Subsidy	2,061,763.17			
7312 Nonpublic and Charter School Pupil Transportation Subsidy	100,100.00			
7320 Rental and Sinking Fund Payments / Building Reimbursement Subsidy	898,632.72			
7330 Health Services (Medical, Dental, Nurse, Act 25)	97,409.90			
7340 State Property Tax Reduction Allocation	1,632,921.23			
7505 Ready to Learn Block Grant	620,860.00			
7599 Other State Revenue Not Listed Elsewhere in the 7000 Series	2,012.33			
7820 State Share of Retirement Contributions	6,979,577.47			
TOTAL Revenue from State Sources	\$31,236,190.09			

Revenue Reported In Current Year				
Revenue from Federal Sources				
8514 Title I - Improving the Academic Achievement of the Disadvantaged	888,720.77			
8515 Title II - Preparing, Training, and Recruiting High Quality Teachers and Principals	116,355.42			
8517 Title IV - 21st Century Schools	74,146.36			
8744 ARP ESSER - Elementary and Secondary School Emergency Relief Fund	1,024,686.60			
8751 ARP ESSER Learning Loss	234,256.69			
8754 ARP ESSER Homeless Children and Youth Funds	5,436.63			
8810 School-Based Access Medicaid Reimbursement Program (SBAP) Reimbursements (Access)	283,000.00			
8820 Medical Assistance Reimbursement for Administrative Claiming (Quarterly) Program	9,095.09			
TOTAL Revenue from Federal Sources	\$2,635,697.56			

Revenue Reported In Current Year				
<u>Other Financing Sources</u>				
9400 Sale of or Compensation for Loss of Fixed Assets	6,310.00			
9990 Insurance Recoveries	52,748.36			
TOTAL Other Financing Sources	\$59,058.36			
TOTAL FROM ALL SOURCES	\$100,849,344.22	\$1,598,481.00	\$1,582,747.00	\$63,366,331.15

LEA : 113365203 Penn Manor SD

Printed 11/28/2023 4:24:53 PM

	<u>General Fund (10)</u>	<u>Student Sponsored Activity Fund (21)</u>	<u>Public Purpose Trust (27)</u>	<u>Other Compt Approved (28)</u>	<u>Athletic / Activity (29)</u>	<u>Capital Reserve (690, 1850) (31)</u>
6000 Revenue from Local Sources						
6111 Current Real Estate Taxes	54,395,029.06					
6112 Interim Real Estate Taxes	273,986.18					
6113 Public Utility Realty Taxes	57,525.69					
6114 Payments in Lieu of Current Taxes - State / Local	204,486.67					
6151 Current Act 511 Earned Income Taxes	6,677,089.35					
6153 Current Act 511 Real Estate Transfer Taxes	960,790.11					
6411 Delinquent Real Estate Taxes	813,130.59					
6420 Delinquent Per Capita Taxes, Section 679	16.50					
6440 Delinquent Local Enabling Taxes - Flat Rate Assessments	11.00					
6500 Earnings on Investments	1,396,782.52					
6700 Revenues from LEA Activities	69,321.20					
6831 Federal Revenue Received from Other Pennsylvania Public LEAs	172,471.55					
6832 Federal IDEA Revenue Received as Pass Through	1,091,890.69					
6833 Federal ARP Act IDEA Revenue Received as Pass Through	134,191.00					
6910 Rentals	56,733.89					
6920 Contributions and Donations from Private Sources	6,180.75					
6942 Summer School Tuition	300.00					
6944 Receipts from Other LEAs in Pennsylvania - Education	148,258.31					
6991 Refunds of a Prior Year Expenditure	1,983.17					
6999 Other Revenues Not Specified Above	458,219.98					
6000 Total Revenue from Local Sources	\$66,918,398.21					
7000 Revenue from State Sources						
7111 Basic Education Funding-Formula	13,656,546.66					
7112 Basic Education Funding-Social Security	1,439,592.75					
7160 Tuition for Orphans Subsidy	155,866.45					
7220 Vocational Education	76,296.68					
7250 Migratory Children	1,360.00					
7271 Special Education funds for School-Aged Pupils	3,513,250.73					
7311 Pupil Transportation Subsidy	2,061,763.17					
7312 Nonpublic and Charter School Pupil Transportation Subsidy	100,100.00					
7320 Rental and Sinking Fund Payments / Building Reimbursement Subsidy	898,632.72					
7330 Health Services (Medical, Dental, Nurse, Act 25)	97,409.90					
7340 State Property Tax Reduction Allocation	1,632,921.23					
7505 Ready to Learn Block Grant	620,860.00					
7599 Other State Revenue Not Listed Elsewhere in the 7000 Series	2,012.33					

LEA : 113365203 Penn Manor SD

Printed 11/28/2023 4:24:53 PM

	<u>Capital Reserve</u> <u>(1431) (32)</u>	<u>Other Capital</u> <u>Projects Fund (39)</u>	<u>Debt Service (40)</u>	<u>Permanent (90)</u>	<u>Total</u>
6000 Revenue from Local Sources					
6111 Current Real Estate Taxes					54,395,029.06
6112 Interim Real Estate Taxes					273,986.18
6113 Public Utility Realty Taxes					57,525.69
6114 Payments in Lieu of Current Taxes - State / Local					204,486.67
6151 Current Act 511 Earned Income Taxes					6,677,089.35
6153 Current Act 511 Real Estate Transfer Taxes					960,790.11
6411 Delinquent Real Estate Taxes					813,130.59
6420 Delinquent Per Capita Taxes, Section 679					16.50
6440 Delinquent Local Enabling Taxes - Flat Rate Assessments					11.00
6500 Earnings on Investments	171,371.00				1,568,153.52
6700 Revenues from LEA Activities					69,321.20
6831 Federal Revenue Received from Other Pennsylvania Public LEAs					172,471.55
6832 Federal IDEA Revenue Received as Pass Through					1,091,890.69
6833 Federal ARP Act IDEA Revenue Received as Pass Through					134,191.00
6910 Rentals					56,733.89
6920 Contributions and Donations from Private Sources					6,180.75
6942 Summer School Tuition					300.00
6944 Receipts from Other LEAs in Pennsylvania - Education					148,258.31
6991 Refunds of a Prior Year Expenditure					1,983.17
6999 Other Revenues Not Specified Above					458,219.98
6000 Total Revenue from Local Sources	\$171,371.00				\$67,089,769.21
7000 Revenue from State Sources					
7111 Basic Education Funding-Formula					13,656,546.66
7112 Basic Education Funding-Social Security					1,439,592.75
7160 Tuition for Orphans Subsidy					155,866.45
7220 Vocational Education					76,296.68
7250 Migratory Children					1,360.00
7271 Special Education funds for School-Aged Pupils					3,513,250.73
7311 Pupil Transportation Subsidy					2,061,763.17
7312 Nonpublic and Charter School Pupil Transportation Subsidy					100,100.00
7320 Rental and Sinking Fund Payments / Building Reimbursement Subsidy					898,632.72
7330 Health Services (Medical, Dental, Nurse, Act 25)					97,409.90
7340 State Property Tax Reduction Allocation					1,632,921.23
7505 Ready to Learn Block Grant					620,860.00
7599 Other State Revenue Not Listed Elsewhere in the 7000 Series					2,012.33

LEA : 113365203 Penn Manor SD

Printed 11/28/2023 4:24:53 PM

	<u>General Fund (10)</u>	<u>Student Sponsored Activity Fund (21)</u>	<u>Public Purpose Trust (27)</u>	<u>Other Compt Approved (28)</u>	<u>Athletic / Activity (29)</u>	<u>Capital Reserve (690, 1850) (31)</u>
7000 Revenue from State Sources						
7820 State Share of Retirement Contributions	6,979,577.47					
7000 Total Revenue from State Sources	\$31,236,190.09					
8000 Revenue from Federal Sources						
8514 Title I - Improving the Academic Achievement of the Disadvantaged	888,720.77					
8515 Title II - Preparing, Training, and Recruiting High Quality Teachers and Principals	116,355.42					
8517 Title IV - 21st Century Schools	74,146.36					
8744 ARP ESSER - Elementary and Secondary School Emergency Relief Fund	1,024,686.60					
8751 ARP ESSER Learning Loss	234,256.69					
8754 ARP ESSER Homeless Children and Youth Funds	5,436.63					
8810 School-Based Access Medicaid Reimbursement Program (SBAP) Reimbursements (Access)	283,000.00					
8820 Medical Assistance Reimbursement for Administrative Claiming (Quarterly) Program	9,095.09					
8000 Total Revenue from Federal Sources	\$2,635,697.56					
9000 Other Financing Sources						
9310 General Fund Transfers						
9400 Sale of or Compensation for Loss of Fixed Assets	6,310.00					
9990 Insurance Recoveries	52,748.36					
9000 Total Other Financing Sources	\$59,058.36					
Total From All Sources	\$100,849,344.22					

LEA : 113365203 Penn Manor SD

Printed 11/28/2023 4:24:53 PM

	<u>Capital Reserve</u> <u>(1431) (32)</u>	<u>Other Capital</u> <u>Projects Fund (39)</u>	<u>Debt Service (40)</u>	<u>Permanent (90)</u>	<u>Total</u>
7000 Revenue from State Sources					
7820 State Share of Retirement Contributions					6,979,577.47
7000 Total Revenue from State Sources					\$31,236,190.09
8000 Revenue from Federal Sources					
8514 Title I - Improving the Academic Achievement of the Disadvantaged					888,720.77
8515 Title II - Preparing, Training, and Recruiting High Quality Teachers and Principals					116,355.42
8517 Title IV - 21st Century Schools					74,146.36
8744 ARP ESSER - Elementary and Secondary School Emergency Relief Fund					1,024,686.60
8751 ARP ESSER Learning Loss					234,256.69
8754 ARP ESSER Homeless Children and Youth Funds					5,436.63
8810 School-Based Access Medicaid Reimbursement Program (SBAP) Reimbursements (Access)					283,000.00
8820 Medical Assistance Reimbursement for Administrative Claiming (Quarterly) Program					9,095.09
8000 Total Revenue from Federal Sources					\$2,635,697.56
9000 Other Financing Sources					
9310 General Fund Transfers	3,800,000.00		9,138,507.50		12,938,507.50
9400 Sale of or Compensation for Loss of Fixed Assets					6,310.00
9990 Insurance Recoveries					52,748.36
9000 Total Other Financing Sources	\$3,800,000.00		\$9,138,507.50		\$12,997,565.86
Total From All Sources	\$3,971,371.00		\$9,138,507.50		\$113,959,222.72

LEA : 113365203 Penn Manor SD

Printed 11/28/2023 4:24:55 PM

	<u>General Fund (10)</u>	<u>Student Sponsored Activity Fund (21)</u>	<u>Public Purpose Trust (27)</u>	<u>Other Compt Approved (28)</u>	<u>Athletic / Activity (29)</u>	<u>Capital Reserve (690. 1850) (31)</u>
Revenue from Local Sources	66,918,398.21					
Revenue from State Sources	31,236,190.09					
Revenue from Federal Sources	2,635,697.56					
Other Financing Sources	59,058.36					
Total From All Sources	\$100,849,344.22					

LEA : 113365203 Penn Manor SD

Printed 11/28/2023 4:24:55 PM

	<u>Capital Reserve (1431)</u> <u>(32)</u>	<u>Other Capital Projects</u> <u>Fund (39)</u>	<u>Debt Service (40)</u>	<u>Permanent (90)</u>	<u>Total</u>
Revenue from Local Sources	171,371.00				67,089,769.21
Revenue from State Sources					31,236,190.09
Revenue from Federal Sources					2,635,697.56
Other Financing Sources	3,800,000.00		9,138,507.50		12,997,565.86
Total From All Sources	\$3,971,371.00		\$9,138,507.50		\$113,959,222.72

LEA : 113365203 Penn Manor SD

Printed 11/28/2023 4:24:57 PM

General Fund (10)

1000 Instruction		Total
100 <u>Personnel Services – Salaries</u>		
100 Personnel Services – Salaries		27,892,768.74
Total Personnel Services – Salaries		\$27,892,768.74
200 <u>Personnel Services – Employee Benefits</u>		
210 Group Insurance – Contracted Provider		56,226.91
220 Social Security Contributions		2,063,565.60
230 PSERS Retirement Contributions		9,880,496.18
250 Unemployment Compensation		15,505.84
260 Workers' Compensation		184,400.00
270 Group Insurance – Self-Insurance		4,933,242.12
291 Other Retirement Plans		113,659.95
Total Personnel Services – Employee Benefits		\$17,247,096.60
300 <u>Purchased Professional and Technical Services</u>		
322 Professional Educational Services – Ius		6,336,773.37
329 Professional Educational Services – Other		2,018,131.01
330 Other Professional Services		276,655.84
Total Purchased Professional and Technical Services		\$8,631,560.22
400 <u>Purchased Property Services</u>		
430 Repairs and Maintenance Services		224,211.57
Total Purchased Property Services		\$224,211.57
500 <u>Other Purchased Services</u>		
510 Student Transportation Services		13,168.22
561 Tuition To Other School Districts Within the State		296,490.02
562 Tuition To Pennsylvania Charter Schools		2,043,332.08
563 Tuition To Nonpublic Schools		1,014,564.96
564 Tuition To Career and Technology Centers		1,820,501.00
567 Tuition To Approved Private Schools (APS) and PA Chartered Schools for the Deaf and Blind		48,537.58
568 Tuition To Private Residential Rehabilitative Institutions (PRRI) [In-State] and Detention Centers		23,033.43
569 Tuition – Other		73,430.00
580 Travel		11,126.96
594 IU Payment By Withholding for Institutionalized Children's Programs – Special Classes		13,789.69
Total Other Purchased Services		\$5,357,973.94
600 <u>Supplies</u>		
610 General Supplies		1,432,696.18
630 Food		84.75
640 Books and Periodicals		108,082.99
650 Supplies & Fees – Technology Related		94,108.82
Total Supplies		\$1,634,972.74
700 <u>Property</u>		
752 Capital Equipment – Original and Additional		21,510.66
Total Property		\$21,510.66

LEA : 113365203 Penn Manor SD

Printed 11/28/2023 4:24:57 PM

General Fund (10)		
1000 Instruction		<u>Total</u>
800 <u>Other Objects</u>		
810 Dues and Fees		7,615.50
Total Other Objects		\$7,615.50
Total 1000 Instruction		\$61,017,709.97

LEA : 113365203 Penn Manor SD

Printed 11/28/2023 4:24:57 PM

General Fund (10)

1100 Regular Programs – Elementary / Secondary	Elementary	Secondary	Federal	Total
100 Personnel Services – Salaries				
100 Personnel Services – Salaries	11,595,821.05	10,566,185.10	962,828.81	23,124,834.96
Total Personnel Services – Salaries	\$11,595,821.05	\$10,566,185.10	\$962,828.81	\$23,124,834.96
200 Personnel Services – Employee Benefits				
210 Group Insurance – Contracted Provider	24,067.78	20,371.35		44,439.13
220 Social Security Contributions	898,453.10	775,497.62	36,213.86	1,710,164.58
230 PSERS Retirement Contributions	4,182,372.53	3,834,977.06	166,534.50	8,183,884.09
250 Unemployment Compensation	7,746.32	7,746.32		15,492.64
260 Workers' Compensation	81,000.00	66,300.00		147,300.00
270 Group Insurance – Self-Insurance	2,328,751.67	1,864,109.19	116,031.27	4,308,892.13
291 Other Retirement Plans	113,659.95			113,659.95
Total Personnel Services – Employee Benefits	\$7,636,051.35	\$6,569,001.54	\$318,779.63	\$14,523,832.52
300 Purchased Professional and Technical Services				
329 Professional Educational Services – Other	405,526.31	388,208.70		793,735.01
330 Other Professional Services	10,663.23	84,929.30	20,000.00	115,592.53
Total Purchased Professional and Technical Services	\$416,189.54	\$473,138.00	\$20,000.00	\$909,327.54
400 Purchased Property Services				
430 Repairs and Maintenance Services	61,757.00	123,152.77		184,909.77
Total Purchased Property Services	\$61,757.00	\$123,152.77		\$184,909.77
500 Other Purchased Services				
510 Student Transportation Services	3,019.57	5,749.47		8,769.04
561 Tuition To Other School Districts Within the State	1,649.32	65,174.88		66,824.20
562 Tuition To Pennsylvania Charter Schools	383,919.92	678,959.66		1,062,879.58
569 Tuition – Other		73,430.00		73,430.00
580 Travel	2,132.20	2,109.72		4,241.92
Total Other Purchased Services	\$390,721.01	\$825,423.73		\$1,216,144.74
600 Supplies				
610 General Supplies	486,173.79	539,205.10	336,220.01	1,361,598.90
630 Food	84.75			84.75
640 Books and Periodicals	94,595.16	7,327.61		101,922.77
650 Supplies & Fees – Technology Related	1,193.99	79,436.88	10,579.95	91,210.82
Total Supplies	\$582,047.69	\$625,969.59	\$346,799.96	\$1,554,817.24
800 Other Objects				
810 Dues and Fees		7,220.50		7,220.50
Total Other Objects		\$7,220.50		\$7,220.50
Total 1100 Regular Programs – Elementary / Secondary	\$20,682,587.64	\$19,190,091.23	\$1,648,408.40	\$41,521,087.27

LEA : 113365203 Penn Manor SD

Printed 11/28/2023 4:24:57 PM

General Fund (10)

1110 Regular Programs

	Elementary	Secondary	Federal	Total
100 <u>Personnel Services – Salaries</u>				
100 Personnel Services – Salaries	11,595,821.05	10,566,185.10	295,787.13	22,457,793.28
Total Personnel Services – Salaries	\$11,595,821.05	\$10,566,185.10	\$295,787.13	\$22,457,793.28
200 <u>Personnel Services – Employee Benefits</u>				
210 Group Insurance – Contracted Provider	24,067.78	20,371.35		44,439.13
220 Social Security Contributions	898,453.10	775,497.62	11,259.70	1,685,210.42
230 PSERS Retirement Contributions	4,182,372.53	3,834,977.06	51,258.15	8,068,607.74
250 Unemployment Compensation	7,746.32	7,746.32		15,492.64
260 Workers' Compensation	81,000.00	66,300.00		147,300.00
270 Group Insurance – Self-Insurance	2,328,751.67	1,864,109.19		4,192,860.86
291 Other Retirement Plans	113,659.95			113,659.95
Total Personnel Services – Employee Benefits	\$7,636,051.35	\$6,569,001.54	\$62,517.85	\$14,267,570.74
300 <u>Purchased Professional and Technical Services</u>				
329 Professional Educational Services – Other	405,526.31	388,208.70		793,735.01
330 Other Professional Services	10,663.23	84,929.30		95,592.53
Total Purchased Professional and Technical Services	\$416,189.54	\$473,138.00		\$889,327.54
400 <u>Purchased Property Services</u>				
430 Repairs and Maintenance Services	61,757.00	123,152.77		184,909.77
Total Purchased Property Services	\$61,757.00	\$123,152.77		\$184,909.77
500 <u>Other Purchased Services</u>				
510 Student Transportation Services	3,019.57	5,749.47		8,769.04
561 Tuition To Other School Districts Within the State	1,649.32	65,174.88		66,824.20
562 Tuition To Pennsylvania Charter Schools	383,919.92	678,959.66		1,062,879.58
569 Tuition – Other		73,430.00		73,430.00
580 Travel	2,132.20	2,109.72		4,241.92
Total Other Purchased Services	\$390,721.01	\$825,423.73		\$1,216,144.74
600 <u>Supplies</u>				
610 General Supplies	486,173.79	539,205.10	304,456.16	1,329,835.05
630 Food	84.75			84.75
640 Books and Periodicals	94,595.16	7,327.61		101,922.77
650 Supplies & Fees – Technology Related	1,193.99	79,436.88	10,579.95	91,210.82
Total Supplies	\$582,047.69	\$625,969.59	\$315,036.11	\$1,523,053.39
800 <u>Other Objects</u>				
810 Dues and Fees		7,220.50		7,220.50
Total Other Objects		\$7,220.50		\$7,220.50
Total 1110 Regular Programs	\$20,682,587.64	\$19,190,091.23	\$673,341.09	\$40,546,019.96

LEA : 113365203 Penn Manor SD

Printed 11/28/2023 4:24:57 PM

General Fund (10)

1190 Federally-Funded Regular Programs	<u>Elementary</u>	<u>Secondary</u>	<u>Federal</u>	<u>Total</u>
100 <u>Personnel Services – Salaries</u>				
100 Personnel Services – Salaries			667,041.68	667,041.68
Total Personnel Services – Salaries			\$667,041.68	\$667,041.68
200 <u>Personnel Services – Employee Benefits</u>				
220 Social Security Contributions			24,954.16	24,954.16
230 PSERS Retirement Contributions			115,276.35	115,276.35
270 Group Insurance – Self-Insurance			116,031.27	116,031.27
Total Personnel Services – Employee Benefits			\$256,261.78	\$256,261.78
300 <u>Purchased Professional and Technical Services</u>				
330 Other Professional Services			20,000.00	20,000.00
Total Purchased Professional and Technical Services			\$20,000.00	\$20,000.00
600 <u>Supplies</u>				
610 General Supplies			31,763.85	31,763.85
Total Supplies			\$31,763.85	\$31,763.85
Total 1190 Federally-Funded Regular Programs			\$975,067.31	\$975,067.31

LEA : 113365203 Penn Manor SD

Printed 11/28/2023 4:24:57 PM

General Fund (10)

1200 Special Programs – Elementary / Secondary	Elementary	Secondary	Federal	Total
100 Personnel Services – Salaries				
100 Personnel Services – Salaries	1,826,489.57	2,294,109.55	57,152.00	4,177,751.12
Total Personnel Services – Salaries	\$1,826,489.57	\$2,294,109.55	\$57,152.00	\$4,177,751.12
200 Personnel Services – Employee Benefits				
210 Group Insurance – Contracted Provider	4,459.85	4,473.61		8,933.46
220 Social Security Contributions	135,484.61	171,527.19	2,186.00	309,197.80
230 PSERS Retirement Contributions	651,680.49	832,506.59	10,075.00	1,494,262.08
250 Unemployment Compensation		13.20		13.20
260 Workers' Compensation	14,850.00	19,050.00		33,900.00
270 Group Insurance – Self-Insurance	190,220.38	415,431.86	5,706.00	611,358.24
Total Personnel Services – Employee Benefits	\$996,695.33	\$1,443,002.45	\$17,967.00	\$2,457,664.78
300 Purchased Professional and Technical Services				
322 Professional Educational Services – Ius	2,371,135.43	2,598,514.69	1,352,655.78	6,322,305.90
329 Professional Educational Services – Other	516,284.13	463,134.87	244,977.00	1,224,396.00
330 Other Professional Services	137,289.67	12,510.14	11,263.50	161,063.31
Total Purchased Professional and Technical Services	\$3,024,709.23	\$3,074,159.70	\$1,608,896.28	\$7,707,765.21
400 Purchased Property Services				
430 Repairs and Maintenance Services	18,582.00	20,719.80		39,301.80
Total Purchased Property Services	\$18,582.00	\$20,719.80		\$39,301.80
500 Other Purchased Services				
510 Student Transportation Services	2,199.95	1,066.80		3,266.75
561 Tuition To Other School Districts Within the State	36,239.67	193,426.15		229,665.82
562 Tuition To Pennsylvania Charter Schools	452,729.18	527,723.32		980,452.50
563 Tuition To Nonpublic Schools		1,014,564.96		1,014,564.96
567 Tuition To Approved Private Schools (APS) and PA Chartered Schools for the Deaf and Blind		48,537.58		48,537.58
568 Tuition To Private Residential Rehabilitative Institutions (PRRI) [In-State] and Detention Centers		11,331.68		11,331.68
580 Travel	3,201.71	3,545.16		6,746.87
594 IU Payment By Withholding for Institutionalized Children's Programs – Special Classes		13,789.69		13,789.69
Total Other Purchased Services	\$494,370.51	\$1,813,985.34		\$2,308,355.85
600 Supplies				
610 General Supplies	28,461.12	24,255.14		52,716.26
640 Books and Periodicals	5,753.22	407.00		6,160.22
650 Supplies & Fees – Technology Related	1,804.50	1,093.50		2,898.00
Total Supplies	\$36,018.84	\$25,755.64		\$61,774.48
800 Other Objects				
810 Dues and Fees	197.50	197.50		395.00
Total Other Objects	\$197.50	\$197.50		\$395.00
Total 1200 Special Programs – Elementary / Secondary	\$6,397,062.98	\$8,671,929.98	\$1,684,015.28	\$16,753,008.24

LEA : 113365203 Penn Manor SD

Printed 11/28/2023 4:24:57 PM

General Fund (10)

1210 Life Skills Support

	Elementary	Secondary	Federal	Total
100 <u>Personnel Services – Salaries</u>				
100 Personnel Services – Salaries	1,262,957.68	1,876,630.38		3,139,588.06
Total Personnel Services – Salaries	\$1,262,957.68	\$1,876,630.38		\$3,139,588.06
200 <u>Personnel Services – Employee Benefits</u>				
210 Group Insurance – Contracted Provider	4,459.85	4,473.61		8,933.46
220 Social Security Contributions	92,726.11	140,580.23		233,306.34
230 PSERS Retirement Contributions	454,064.08	673,829.56		1,127,893.64
250 Unemployment Compensation		13.20		13.20
260 Workers' Compensation	12,450.00	15,150.00		27,600.00
270 Group Insurance – Self-Insurance	189,525.09	414,585.26		604,110.35
Total Personnel Services – Employee Benefits	\$753,225.13	\$1,248,631.86		\$2,001,856.99
300 <u>Purchased Professional and Technical Services</u>				
329 Professional Educational Services – Other	516,284.13	463,134.87		979,419.00
330 Other Professional Services	3,520.59	12,510.14		16,030.73
Total Purchased Professional and Technical Services	\$519,804.72	\$475,645.01		\$995,449.73
400 <u>Purchased Property Services</u>				
430 Repairs and Maintenance Services	18,582.00	20,719.80		39,301.80
Total Purchased Property Services	\$18,582.00	\$20,719.80		\$39,301.80
500 <u>Other Purchased Services</u>				
510 Student Transportation Services	2,199.95			2,199.95
562 Tuition To Pennsylvania Charter Schools	452,729.18	527,723.32		980,452.50
563 Tuition To Nonpublic Schools		1,014,564.96		1,014,564.96
580 Travel	3,034.33	3,074.27		6,108.60
Total Other Purchased Services	\$457,963.46	\$1,545,362.55		\$2,003,326.01
600 <u>Supplies</u>				
610 General Supplies	22,122.34	22,319.78		44,442.12
640 Books and Periodicals	5,651.21	407.00		6,058.21
650 Supplies & Fees – Technology Related	1,804.50	1,093.50		2,898.00
Total Supplies	\$29,578.05	\$23,820.28		\$53,398.33
800 <u>Other Objects</u>				
810 Dues and Fees	197.50	197.50		395.00
Total Other Objects	\$197.50	\$197.50		\$395.00
Total 1210 Life Skills Support	\$3,042,308.54	\$5,191,007.38		\$8,233,315.92

LEA : 113365203 Penn Manor SD

Printed 11/28/2023 4:24:57 PM

General Fund (10)

1220 Sensory Support	Elementary	Secondary	Federal	Total
100 <u>Personnel Services – Salaries</u>				
100 Personnel Services – Salaries	388,760.09	79,190.00	26,608.00	494,558.09
Total Personnel Services – Salaries	\$388,760.09	\$79,190.00	\$26,608.00	\$494,558.09
200 <u>Personnel Services – Employee Benefits</u>				
220 Social Security Contributions	29,747.85	5,918.00	1,018.00	36,683.85
230 PSERS Retirement Contributions	135,908.72	27,922.43	4,691.00	168,522.15
260 Workers’ Compensation	1,300.00	1,300.00		2,600.00
270 Group Insurance – Self-Insurance	695.29	300.00	5,706.00	6,701.29
Total Personnel Services – Employee Benefits	\$167,651.86	\$35,440.43	\$11,415.00	\$214,507.29
300 <u>Purchased Professional and Technical Services</u>				
330 Other Professional Services	133,769.08			133,769.08
Total Purchased Professional and Technical Services	\$133,769.08			\$133,769.08
500 <u>Other Purchased Services</u>				
580 Travel	122.50	470.89		593.39
Total Other Purchased Services	\$122.50	\$470.89		\$593.39
600 <u>Supplies</u>				
610 General Supplies	1,270.14	1,492.71		2,762.85
Total Supplies	\$1,270.14	\$1,492.71		\$2,762.85
Total 1220 Sensory Support	\$691,573.67	\$116,594.03	\$38,023.00	\$846,190.70

LEA : 113365203 Penn Manor SD

Printed 11/28/2023 4:24:57 PM

General Fund (10)				
1240 Academic Support	<u>Elementary</u>	<u>Secondary</u>	<u>Federal</u>	<u>Total</u>
100 <u>Personnel Services – Salaries</u>				
100 Personnel Services – Salaries	174,771.80	338,289.17		513,060.97
Total Personnel Services – Salaries	\$174,771.80	\$338,289.17		\$513,060.97
200 <u>Personnel Services – Employee Benefits</u>				
220 Social Security Contributions	13,010.65	25,028.96		38,039.61
230 PSERS Retirement Contributions	61,707.69	130,754.60		192,462.29
260 Workers’ Compensation	1,100.00	2,600.00		3,700.00
270 Group Insurance – Self-Insurance		546.60		546.60
Total Personnel Services – Employee Benefits	\$75,818.34	\$158,930.16		\$234,748.50
500 <u>Other Purchased Services</u>				
510 Student Transportation Services		1,066.80		1,066.80
580 Travel	44.88			44.88
Total Other Purchased Services	\$44.88	\$1,066.80		\$1,111.68
600 <u>Supplies</u>				
610 General Supplies	5,068.64	442.65		5,511.29
640 Books and Periodicals	102.01			102.01
Total Supplies	\$5,170.65	\$442.65		\$5,613.30
Total 1240 Academic Support	\$255,805.67	\$498,728.78		\$754,534.45

LEA : 113365203 Penn Manor SD

Printed 11/28/2023 4:24:57 PM

General Fund (10)

1243 Gifted Support	Elementary	Secondary	Federal	Total
100 <u>Personnel Services – Salaries</u>				
100 Personnel Services – Salaries	174,771.80	338,289.17		513,060.97
Total Personnel Services – Salaries	\$174,771.80	\$338,289.17		\$513,060.97
200 <u>Personnel Services – Employee Benefits</u>				
220 Social Security Contributions	13,010.65	25,028.96		38,039.61
230 PSERS Retirement Contributions	61,707.69	130,754.60		192,462.29
260 Workers’ Compensation	1,100.00	2,600.00		3,700.00
270 Group Insurance – Self-Insurance		546.60		546.60
Total Personnel Services – Employee Benefits	\$75,818.34	\$158,930.16		\$234,748.50
500 <u>Other Purchased Services</u>				
510 Student Transportation Services		1,066.80		1,066.80
580 Travel	44.88			44.88
Total Other Purchased Services	\$44.88	\$1,066.80		\$1,111.68
600 <u>Supplies</u>				
610 General Supplies	5,068.64	442.65		5,511.29
640 Books and Periodicals	102.01			102.01
Total Supplies	\$5,170.65	\$442.65		\$5,613.30
Total 1243 Gifted Support	\$255,805.67	\$498,728.78		\$754,534.45

LEA : 113365203 Penn Manor SD

Printed 11/28/2023 4:24:57 PM

General Fund (10)

1290 Special Programs - Other Support	Elementary	Secondary	Federal	Total
100 <u>Personnel Services – Salaries</u>				
100 Personnel Services – Salaries			30,544.00	30,544.00
Total Personnel Services – Salaries			\$30,544.00	\$30,544.00
200 <u>Personnel Services – Employee Benefits</u>				
220 Social Security Contributions			1,168.00	1,168.00
230 PSERS Retirement Contributions			5,384.00	5,384.00
Total Personnel Services – Employee Benefits			\$6,552.00	\$6,552.00
300 <u>Purchased Professional and Technical Services</u>				
322 Professional Educational Services – Ius	2,371,135.43	2,598,514.69	1,352,655.78	6,322,305.90
329 Professional Educational Services – Other			244,977.00	244,977.00
330 Other Professional Services			11,263.50	11,263.50
Total Purchased Professional and Technical Services	\$2,371,135.43	\$2,598,514.69	\$1,608,896.28	\$6,578,546.40
500 <u>Other Purchased Services</u>				
561 Tuition To Other School Districts Within the State	36,239.67	193,426.15		229,665.82
567 Tuition To Approved Private Schools (APS) and PA Chartered Schools for the Deaf and Blind		48,537.58		48,537.58
568 Tuition To Private Residential Rehabilitative Institutions (PRRI) [In-State] and Detention Centers		11,331.68		11,331.68
594 IU Payment By Withholding for Institutionalized Children's Programs – Special Classes		13,789.69		13,789.69
Total Other Purchased Services	\$36,239.67	\$267,085.10		\$303,324.77
Total 1290 Special Programs - Other Support	\$2,407,375.10	\$2,865,599.79	\$1,645,992.28	\$6,918,967.17

LEA : 113365203 Penn Manor SD

Printed 11/28/2023 4:24:57 PM

General Fund (10)

1300 Vocational Education

	<u>Elementary</u>	<u>Secondary</u>	<u>Federal</u>	<u>Total</u>
100 <u>Personnel Services – Salaries</u>				
100 Personnel Services – Salaries		368,595.81		368,595.81
Total Personnel Services – Salaries		\$368,595.81		\$368,595.81
200 <u>Personnel Services – Employee Benefits</u>				
210 Group Insurance – Contracted Provider		2,854.32		2,854.32
220 Social Security Contributions		27,645.53		27,645.53
230 PSERS Retirement Contributions		129,502.88		129,502.88
260 Workers' Compensation		2,700.00		2,700.00
270 Group Insurance – Self-Insurance		12,991.75		12,991.75
Total Personnel Services – Employee Benefits		\$175,694.48		\$175,694.48
500 <u>Other Purchased Services</u>				
510 Student Transportation Services		1,132.43		1,132.43
564 Tuition To Career and Technology Centers		1,820,501.00		1,820,501.00
Total Other Purchased Services		\$1,821,633.43		\$1,821,633.43
600 <u>Supplies</u>				
610 General Supplies		17,168.58		17,168.58
Total Supplies		\$17,168.58		\$17,168.58
700 <u>Property</u>				
752 Capital Equipment – Original and Additional		21,510.66		21,510.66
Total Property		\$21,510.66		\$21,510.66
Total 1300 Vocational Education		\$2,404,602.96		\$2,404,602.96

LEA : 113365203 Penn Manor SD

Printed 11/28/2023 4:24:57 PM

General Fund (10)

1400 Other Instructional Programs – Elementary / Secondary	Elementary	Secondary	Federal	Total
100 Personnel Services – Salaries				
100 Personnel Services – Salaries	4,240.95	122,229.34	95,116.56	221,586.85
Total Personnel Services – Salaries	\$4,240.95	\$122,229.34	\$95,116.56	\$221,586.85
200 Personnel Services – Employee Benefits				
220 Social Security Contributions	320.08	12,599.29	3,638.32	16,557.69
230 PSERS Retirement Contributions	1,493.67	54,608.96	16,744.50	72,847.13
260 Workers’ Compensation		500.00		500.00
Total Personnel Services – Employee Benefits	\$1,813.75	\$67,708.25	\$20,382.82	\$89,904.82
500 Other Purchased Services				
568 Tuition To Private Residential Rehabilitative Institutions (PRRI) [In-State] and Detention Centers	1,176.25	10,525.50		11,701.75
580 Travel	98.42	39.75		138.17
Total Other Purchased Services	\$1,274.67	\$10,565.25		\$11,839.92
600 Supplies				
610 General Supplies		1,212.44		1,212.44
Total Supplies		\$1,212.44		\$1,212.44
Total 1400 Other Instructional Programs – Elementary / Secondary	\$7,329.37	\$201,715.28	\$115,499.38	\$324,544.03

LEA : 113365203 Penn Manor SD

Printed 11/28/2023 4:24:57 PM

General Fund (10)

1420 Summer School

	<u>Elementary</u>	<u>Secondary</u>	<u>Federal</u>	<u>Total</u>
100 <u>Personnel Services – Salaries</u>				
100 Personnel Services – Salaries		6,413.75	34,492.50	40,906.25
Total Personnel Services – Salaries		\$6,413.75	\$34,492.50	\$40,906.25
200 <u>Personnel Services – Employee Benefits</u>				
220 Social Security Contributions		1,804.65	1,319.34	3,123.99
230 PSERS Retirement Contributions		7,432.98	6,081.03	13,514.01
Total Personnel Services – Employee Benefits		\$9,237.63	\$7,400.37	\$16,638.00
Total 1420 Summer School		\$15,651.38	\$41,892.87	\$57,544.25

LEA : 113365203 Penn Manor SD

Printed 11/28/2023 4:24:57 PM

General Fund (10)

1430 Homebound Instruction	<u>Elementary</u>	<u>Secondary</u>	<u>Federal</u>	<u>Total</u>
100 <u>Personnel Services – Salaries</u>				
100 Personnel Services – Salaries	4,240.95	393.75		4,634.70
Total Personnel Services – Salaries	\$4,240.95	\$393.75		\$4,634.70
200 <u>Personnel Services – Employee Benefits</u>				
220 Social Security Contributions	320.08	29.38		349.46
230 PSERS Retirement Contributions	1,493.67	138.83		1,632.50
Total Personnel Services – Employee Benefits	\$1,813.75	\$168.21		\$1,981.96
500 <u>Other Purchased Services</u>				
568 Tuition To Private Residential Rehabilitative Institutions (PRRI) [In-State] and Detention Centers	1,176.25	10,525.50		11,701.75
580 Travel	98.42	39.75		138.17
Total Other Purchased Services	\$1,274.67	\$10,565.25		\$11,839.92
Total 1430 Homebound Instruction	\$7,329.37	\$11,127.21		\$18,456.58

LEA : 113365203 Penn Manor SD

Printed 11/28/2023 4:24:57 PM

General Fund (10)

1440 Alternative Regular Education Programs	<u>Elementary</u>	<u>Secondary</u>	<u>Federal</u>	<u>Total</u>
100 <u>Personnel Services – Salaries</u>				
100 Personnel Services – Salaries		72,785.54		72,785.54
Total Personnel Services – Salaries		\$72,785.54		\$72,785.54
200 <u>Personnel Services – Employee Benefits</u>				
220 Social Security Contributions		5,423.76		5,423.76
230 PSERS Retirement Contributions		24,068.04		24,068.04
260 Workers’ Compensation		500.00		500.00
Total Personnel Services – Employee Benefits		\$29,991.80		\$29,991.80
600 <u>Supplies</u>				
610 General Supplies		1,212.44		1,212.44
Total Supplies		\$1,212.44		\$1,212.44
Total 1440 Alternative Regular Education Programs		\$103,989.78		\$103,989.78

LEA : 113365203 Penn Manor SD

Printed 11/28/2023 4:24:57 PM

General Fund (10)

1442 Alternative Education Programs	<u>Elementary</u>	<u>Secondary</u>	<u>Federal</u>	<u>Total</u>
100 <u>Personnel Services – Salaries</u>				
100 Personnel Services – Salaries		72,785.54		72,785.54
Total Personnel Services – Salaries		\$72,785.54		\$72,785.54
200 <u>Personnel Services – Employee Benefits</u>				
220 Social Security Contributions		5,423.76		5,423.76
230 PSERS Retirement Contributions		24,068.04		24,068.04
260 Workers’ Compensation		500.00		500.00
Total Personnel Services – Employee Benefits		\$29,991.80		\$29,991.80
600 <u>Supplies</u>				
610 General Supplies		1,212.44		1,212.44
Total Supplies		\$1,212.44		\$1,212.44
Total 1442 Alternative Education Programs		\$103,989.78		\$103,989.78

LEA : 113365203 Penn Manor SD

Printed 11/28/2023 4:24:57 PM

General Fund (10)

1450 Instructional Programs Outside the Established School Day	<u>Elementary</u>	<u>Secondary</u>	<u>Federal</u>	<u>Total</u>
100 <u>Personnel Services – Salaries</u>				
100 Personnel Services – Salaries		42,636.30	60,624.06	103,260.36
Total Personnel Services – Salaries		\$42,636.30	\$60,624.06	\$103,260.36
200 <u>Personnel Services – Employee Benefits</u>				
220 Social Security Contributions		5,341.50	2,318.98	7,660.48
230 PSERS Retirement Contributions		22,969.11	10,663.47	33,632.58
Total Personnel Services – Employee Benefits		\$28,310.61	\$12,982.45	\$41,293.06
Total 1450 Instructional Programs Outside the Established School Day		\$70,946.91	\$73,606.51	\$144,553.42

LEA : 113365203 Penn Manor SD

Printed 11/28/2023 4:24:57 PM

General Fund (10)

1500 Nonpublic School Programs

<u>Elementary</u>	<u>Secondary</u>	<u>Federal</u>	<u>Total</u>
-------------------	------------------	----------------	--------------

300 Purchased Professional and Technical Services

322 Professional Educational Services – lus		14,467.47	14,467.47
---	--	-----------	-----------

Total Purchased Professional and Technical Services		\$14,467.47	\$14,467.47
--	--	--------------------	--------------------

Total 1500 Nonpublic School Programs		\$14,467.47	\$14,467.47
---	--	--------------------	--------------------

LEA : 113365203 Penn Manor SD

Printed 11/28/2023 4:25:00 PM

General Fund (10)

2000 Support Services

Total

100	<u>Personnel Services – Salaries</u>	
100	Personnel Services – Salaries	10,367,620.81
Total Personnel Services – Salaries		\$10,367,620.81
200	<u>Personnel Services – Employee Benefits</u>	
210	Group Insurance – Contracted Provider	26,947.67
220	Social Security Contributions	765,782.37
230	PSERS Retirement Contributions	3,635,876.22
240	Tuition Reimbursement	387,405.10
260	Workers' Compensation	65,200.00
270	Group Insurance – Self-Insurance	2,165,216.90
Total Personnel Services – Employee Benefits		\$7,046,428.26
300	<u>Purchased Professional and Technical Services</u>	
329	Professional Educational Services – Other	15,209.56
330	Other Professional Services	174,977.62
340	Technical Services	193,126.85
350	Security / Safety Services	165,251.06
360	Employee Training and Development Services	57,848.50
Total Purchased Professional and Technical Services		\$606,413.59
400	<u>Purchased Property Services</u>	
410	Cleaning Services	84,090.63
420	Utility Services	252,257.79
430	Repairs and Maintenance Services	860,693.03
490	Other Purchased Property Services	1,768.51
Total Purchased Property Services		\$1,198,809.96
500	<u>Other Purchased Services</u>	
510	Student Transportation Services	1,931.55
513	Contracted Carriers	4,784,071.11
516	Student Transportation Services From the IU	11,699.21
520	Insurance – General	300.00
523	General Property and Liability Insurance	368,216.00
530	Communications	119,120.49
549	Other Advertising/Public Relations	34,366.57
550	Printing and Binding	11,984.93
580	Travel	13,012.87
591	Services Purchased Locally	19,357.76
595	IU Payments By Withholding	39,017.82
596	Direct Payments To Intermediate Units	4,858.68
Total Other Purchased Services		\$5,407,936.99
600	<u>Supplies</u>	
610	General Supplies	519,097.30
620	Energy	1,215,538.46
630	Food	32,369.37
640	Books and Periodicals	7,052.80
650	Supplies & Fees – Technology Related	79,745.11

LEA : 113365203 Penn Manor SD

Printed 11/28/2023 4:25:00 PM

General Fund (10)

2000 Support Services

Total

Total Supplies		\$1,853,803.04
700 <u>Property</u>		
752 Capital Equipment – Original and Additional		129,869.00
Total Property		\$129,869.00
800 <u>Other Objects</u>		
810 Dues and Fees		28,270.49
890 Miscellaneous Expenditures		4,000.00
Total Other Objects		\$32,270.49
Total 2000 Support Services		\$26,643,152.14

LEA : 113365203 Penn Manor SD

Printed 11/28/2023 4:25:00 PM

General Fund (10)				
2100 Support Services – Students	<u>Elementary</u>	<u>Secondary</u>	<u>Federal</u>	<u>Total</u>
100 <u>Personnel Services – Salaries</u>				
100 Personnel Services – Salaries	716,140.41	1,022,853.06	201,197.88	1,970,623.95
Total Personnel Services – Salaries	\$716,140.41	\$1,022,853.06	\$201,197.88	\$1,970,623.95
200 <u>Personnel Services – Employee Benefits</u>				
210 Group Insurance – Contracted Provider	1,578.39	2,741.49		4,319.88
220 Social Security Contributions	61,030.86	76,056.97	7,695.82	147,074.11
230 PSERS Retirement Contributions	287,056.99	354,016.20	35,440.19	677,783.35
260 Workers' Compensation	4,850.00	6,650.00		11,800.00
270 Group Insurance – Self-Insurance	132,864.75	230,972.59		365,643.45
Total Personnel Services – Employee Benefits	\$487,380.99	\$670,437.25	\$43,136.01	\$1,206,620.79
300 <u>Purchased Professional and Technical Services</u>				
330 Other Professional Services	26,004.38	26,004.37	16,281.00	68,289.75
Total Purchased Professional and Technical Services	\$26,004.38	\$26,004.37	\$16,281.00	\$68,289.75
500 <u>Other Purchased Services</u>				
510 Student Transportation Services		1,931.55		1,931.55
580 Travel	1,096.50	801.72		1,898.22
Total Other Purchased Services	\$1,096.50	\$2,733.27		\$3,829.77
600 <u>Supplies</u>				
610 General Supplies	1,167.12	1,129.02		2,296.14
640 Books and Periodicals	292.64			292.64
650 Supplies & Fees – Technology Related		7,234.92		7,234.92
Total Supplies	\$1,459.76	\$8,363.94		\$9,823.70
800 <u>Other Objects</u>				
810 Dues and Fees		154.00		154.00
890 Miscellaneous Expenditures			4,000.00	4,000.00
Total Other Objects		\$154.00	\$4,000.00	\$4,154.00
Total 2100 Support Services – Students	\$1,232,082.04	\$1,730,545.89	\$264,614.89	\$3,263,341.96

LEA : 113365203 Penn Manor SD

Printed 11/28/2023 4:25:00 PM

General Fund (10)

2120 Guidance Services	Elementary	Secondary	Federal	Total
100 <u>Personnel Services – Salaries</u>				
100 Personnel Services – Salaries	483,400.17	833,715.76	201,197.88	1,518,313.81
Total Personnel Services – Salaries	\$483,400.17	\$833,715.76	\$201,197.88	\$1,518,313.81
200 <u>Personnel Services – Employee Benefits</u>				
210 Group Insurance – Contracted Provider	1,002.36	2,210.85		3,213.21
220 Social Security Contributions	43,461.61	61,587.99	7,695.82	112,745.42
230 PSERS Retirement Contributions	205,506.42	288,981.18	35,440.19	529,927.79
260 Workers' Compensation	3,150.00	5,550.00		8,700.00
270 Group Insurance – Self-Insurance	113,067.86	229,120.51		342,188.37
Total Personnel Services – Employee Benefits	\$366,188.25	\$587,450.53	\$43,136.01	\$996,774.79
300 <u>Purchased Professional and Technical Services</u>				
330 Other Professional Services			16,281.00	16,281.00
Total Purchased Professional and Technical Services			\$16,281.00	\$16,281.00
500 <u>Other Purchased Services</u>				
510 Student Transportation Services		1,931.55		1,931.55
580 Travel	294.76			294.76
Total Other Purchased Services	\$294.76	\$1,931.55		\$2,226.31
600 <u>Supplies</u>				
610 General Supplies	774.81	1,129.02		1,903.83
640 Books and Periodicals	292.64			292.64
Total Supplies	\$1,067.45	\$1,129.02		\$2,196.47
800 <u>Other Objects</u>				
810 Dues and Fees		154.00		154.00
890 Miscellaneous Expenditures			4,000.00	4,000.00
Total Other Objects		\$154.00	\$4,000.00	\$4,154.00
Total 2120 Guidance Services	\$850,950.63	\$1,424,380.86	\$264,614.89	\$2,539,946.38

LEA : 113365203 Penn Manor SD

Printed 11/28/2023 4:25:00 PM

General Fund (10)

2130 Attendance Services

Elementary Secondary Federal Total

100 <u>Personnel Services – Salaries</u>				
100 Personnel Services – Salaries				30,432.60
Total Personnel Services – Salaries				\$30,432.60
200 <u>Personnel Services – Employee Benefits</u>				
220 Social Security Contributions				2,290.46
230 PSERS Retirement Contributions				1,269.97
260 Workers’ Compensation				300.00
270 Group Insurance – Self-Insurance				1,806.11
Total Personnel Services – Employee Benefits				\$5,666.54
Total 2130 Attendance Services				\$36,099.14

LEA : 113365203 Penn Manor SD

Printed 11/28/2023 4:25:00 PM

General Fund (10)

2140 Psychological Services	Elementary	Secondary	Federal	Total
100 <u>Personnel Services – Salaries</u>				
100 Personnel Services – Salaries	232,740.24	189,137.30		421,877.54
Total Personnel Services – Salaries	\$232,740.24	\$189,137.30		\$421,877.54
200 <u>Personnel Services – Employee Benefits</u>				
210 Group Insurance – Contracted Provider	576.03	530.64		1,106.67
220 Social Security Contributions	17,569.25	14,468.98		32,038.23
230 PSERS Retirement Contributions	81,550.57	65,035.02		146,585.59
260 Workers' Compensation	1,700.00	1,100.00		2,800.00
270 Group Insurance – Self-Insurance	19,796.89	1,852.08		21,648.97
Total Personnel Services – Employee Benefits	\$121,192.74	\$82,986.72		\$204,179.46
300 <u>Purchased Professional and Technical Services</u>				
330 Other Professional Services	26,004.38	26,004.37		52,008.75
Total Purchased Professional and Technical Services	\$26,004.38	\$26,004.37		\$52,008.75
500 <u>Other Purchased Services</u>				
580 Travel	801.74	801.72		1,603.46
Total Other Purchased Services	\$801.74	\$801.72		\$1,603.46
600 <u>Supplies</u>				
610 General Supplies	392.31			392.31
650 Supplies & Fees – Technology Related		7,234.92		7,234.92
Total Supplies	\$392.31	\$7,234.92		\$7,627.23
Total 2140 Psychological Services	\$381,131.41	\$306,165.03		\$687,296.44

LEA : 113365203 Penn Manor SD

Printed 11/28/2023 4:25:00 PM

General Fund (10)

2200 Support Services – Instructional Staff	Elementary	Secondary	Federal	Total
100 Personnel Services – Salaries				
100 Personnel Services – Salaries	319,676.22	165,211.99		484,888.21
Total Personnel Services – Salaries	\$319,676.22	\$165,211.99		\$484,888.21
200 Personnel Services – Employee Benefits				
210 Group Insurance – Contracted Provider	264.90	169.92		434.82
220 Social Security Contributions	23,871.23	11,324.75		35,195.98
230 PSERS Retirement Contributions	107,281.55	50,042.10		157,323.65
240 Tuition Reimbursement	182,562.25	191,247.85		373,810.10
260 Workers' Compensation	2,200.00	800.00		3,000.00
270 Group Insurance – Self-Insurance	29,356.91	4,078.39		33,435.30
Total Personnel Services – Employee Benefits	\$345,536.84	\$257,663.01		\$603,199.85
300 Purchased Professional and Technical Services				
329 Professional Educational Services – Other			999.36	999.36
330 Other Professional Services	8,013.00	1,900.00		9,913.00
360 Employee Training and Development Services	5,358.63	20,813.65	2,095.26	28,267.54
Total Purchased Professional and Technical Services	\$13,371.63	\$22,713.65	\$3,094.62	\$39,179.90
400 Purchased Property Services				
430 Repairs and Maintenance Services	1,599.00	650.00		2,249.00
Total Purchased Property Services	\$1,599.00	\$650.00		\$2,249.00
600 Supplies				
610 General Supplies	18,981.88	11,245.56	8,938.73	39,166.17
630 Food	2,102.46	2,102.43		4,204.89
640 Books and Periodicals	251.60	6,010.34		6,261.94
650 Supplies & Fees – Technology Related		5,476.12		5,476.12
Total Supplies	\$21,335.94	\$24,834.45	\$8,938.73	\$55,109.12
Total 2200 Support Services – Instructional Staff	\$701,519.63	\$471,073.10	\$12,033.35	\$1,184,626.08

LEA : 113365203 Penn Manor SD

Printed 11/28/2023 4:25:00 PM

General Fund (10)				
2250 School Library Services	<u>Elementary</u>	<u>Secondary</u>	<u>Federal</u>	<u>Total</u>
100 <u>Personnel Services – Salaries</u>				
100 Personnel Services – Salaries	315,231.22	139,029.89		454,261.11
Total Personnel Services – Salaries	\$315,231.22	\$139,029.89		\$454,261.11
200 <u>Personnel Services – Employee Benefits</u>				
210 Group Insurance – Contracted Provider	264.90	169.92		434.82
220 Social Security Contributions	23,542.36	9,380.12		32,922.48
230 PSERS Retirement Contributions	105,783.61	40,837.01		146,620.62
260 Workers' Compensation	2,200.00	800.00		3,000.00
270 Group Insurance – Self-Insurance	29,356.91	4,078.39		33,435.30
Total Personnel Services – Employee Benefits	\$161,147.78	\$55,265.44		\$216,413.22
400 <u>Purchased Property Services</u>				
430 Repairs and Maintenance Services	1,599.00	650.00		2,249.00
Total Purchased Property Services	\$1,599.00	\$650.00		\$2,249.00
600 <u>Supplies</u>				
610 General Supplies	14,930.52	7,258.31		22,188.83
640 Books and Periodicals	251.60	6,010.34		6,261.94
650 Supplies & Fees – Technology Related		5,476.12		5,476.12
Total Supplies	\$15,182.12	\$18,744.77		\$33,926.89
Total 2250 School Library Services	\$493,160.12	\$213,690.10		\$706,850.22

LEA : 113365203 Penn Manor SD

Printed 11/28/2023 4:25:00 PM

General Fund (10)				
2270 Instructional Staff Professional Development Services	<u>Elementary</u>	<u>Secondary</u>	<u>Federal</u>	<u>Total</u>
100 <u>Personnel Services – Salaries</u>				
100 Personnel Services – Salaries	4,445.00	18,836.30		23,281.30
Total Personnel Services – Salaries	\$4,445.00	\$18,836.30		\$23,281.30
200 <u>Personnel Services – Employee Benefits</u>				
220 Social Security Contributions	328.87	1,401.19		1,730.06
230 PSERS Retirement Contributions	1,497.94	6,616.76		8,114.70
240 Tuition Reimbursement	182,562.25	191,247.85		373,810.10
Total Personnel Services – Employee Benefits	\$184,389.06	\$199,265.80		\$383,654.86
300 <u>Purchased Professional and Technical Services</u>				
329 Professional Educational Services – Other			999.36	999.36
330 Other Professional Services	8,013.00	1,900.00		9,913.00
360 Employee Training and Development Services	5,358.63	20,813.65	2,095.26	28,267.54
Total Purchased Professional and Technical Services	\$13,371.63	\$22,713.65	\$3,094.62	\$39,179.90
600 <u>Supplies</u>				
610 General Supplies	4,051.36	3,987.25	5,682.40	13,721.01
630 Food	2,102.46	2,102.43		4,204.89
Total Supplies	\$6,153.82	\$6,089.68	\$5,682.40	\$17,925.90
Total 2270 Instructional Staff Professional Development Services	\$208,359.51	\$246,905.43	\$8,777.02	\$464,041.96

LEA : 113365203 Penn Manor SD

Printed 11/28/2023 4:25:00 PM

General Fund (10)				
2280 Nonpublic Support Services	<u>Elementary</u>	<u>Secondary</u>	<u>Federal</u>	<u>Total</u>
600 <u>Supplies</u>				
610 General Supplies			3,256.33	3,256.33
Total Supplies			\$3,256.33	\$3,256.33
Total 2280 Nonpublic Support Services			\$3,256.33	\$3,256.33

LEA : 113365203 Penn Manor SD

Printed 11/28/2023 4:25:00 PM

General Fund (10)

2290 Other Instructional Staff Services	<u>Elementary</u>	<u>Secondary</u>	<u>Federal</u>	<u>Total</u>
100 <u>Personnel Services – Salaries</u>				
100 Personnel Services – Salaries		7,345.80		7,345.80
Total Personnel Services – Salaries		\$7,345.80		\$7,345.80
200 <u>Personnel Services – Employee Benefits</u>				
220 Social Security Contributions		543.44		543.44
230 PSERS Retirement Contributions		2,588.33		2,588.33
Total Personnel Services – Employee Benefits		\$3,131.77		\$3,131.77
Total 2290 Other Instructional Staff Services		\$10,477.57		\$10,477.57

LEA : 113365203 Penn Manor SD

Printed 11/28/2023 4:25:00 PM

General Fund (10)

2300 Support Services – Administration	Elementary	Secondary	Federal	Total
100 Personnel Services – Salaries				
100 Personnel Services – Salaries	1,196,926.24	1,295,604.27	106,640.04	3,610,090.04
Total Personnel Services – Salaries	\$1,196,926.24	\$1,295,604.27	\$106,640.04	\$3,610,090.04
200 Personnel Services – Employee Benefits				
210 Group Insurance – Contracted Provider	4,559.95	4,770.30		11,267.17
220 Social Security Contributions	89,295.95	95,345.67	4,078.86	266,988.55
230 PSERS Retirement Contributions	421,363.48	453,544.77	18,736.89	1,266,955.21
260 Workers' Compensation	8,100.00	7,800.00		22,600.00
270 Group Insurance – Self-Insurance	319,131.57	269,662.39		711,350.50
Total Personnel Services – Employee Benefits	\$842,450.95	\$831,123.13	\$22,815.75	\$2,279,161.43
300 Purchased Professional and Technical Services				
330 Other Professional Services				45,160.92
340 Technical Services				185,367.38
Total Purchased Professional and Technical Services				\$230,528.30
400 Purchased Property Services				
430 Repairs and Maintenance Services				7,254.92
Total Purchased Property Services				\$7,254.92
500 Other Purchased Services				
520 Insurance – General				300.00
530 Communications				66,623.10
549 Other Advertising/Public Relations				34,366.57
550 Printing and Binding				6,115.83
580 Travel	325.73	303.92		6,612.74
Total Other Purchased Services	\$325.73	\$303.92		\$114,018.24
600 Supplies				
610 General Supplies		7,491.76		14,105.92
630 Food		4,345.57		28,164.48
640 Books and Periodicals				498.22
Total Supplies		\$11,837.33		\$42,768.62
800 Other Objects				
810 Dues and Fees	605.00			24,050.39
Total Other Objects	\$605.00			\$24,050.39
Total 2300 Support Services – Administration	\$2,040,307.92	\$2,138,868.65	\$129,455.79	\$6,307,871.94

LEA : 113365203 Penn Manor SD

Printed 11/28/2023 4:25:00 PM

General Fund (10)				
2310 Board Services	<u>Elementary</u>	<u>Secondary</u>	<u>Federal</u>	<u>Total</u>
500 <u>Other Purchased Services</u>				
520 Insurance – General				100.00
549 Other Advertising/Public Relations				1,722.02
Total Other Purchased Services				\$1,822.02
600 <u>Supplies</u>				
610 General Supplies				3,345.09
640 Books and Periodicals				222.22
Total Supplies				\$3,567.31
800 <u>Other Objects</u>				
810 Dues and Fees				17,072.19
Total Other Objects				\$17,072.19
Total 2310 Board Services				\$22,461.52

LEA : 113365203 Penn Manor SD

Printed 11/28/2023 4:25:00 PM

General Fund (10)				
2320 Board Treasurer Services	<u>Elementary</u>	<u>Secondary</u>	<u>Federal</u>	<u>Total</u>
500 <u>Other Purchased Services</u>				
520 Insurance – General				100.00
Total Other Purchased Services				\$100.00
Total 2320 Board Treasurer Services				\$100.00

LEA : 113365203 Penn Manor SD

Printed 11/28/2023 4:25:00 PM

General Fund (10)

2330 Tax Assessment and Collection Services	<u>Elementary</u>	<u>Secondary</u>	<u>Federal</u>	<u>Total</u>
300 <u>Purchased Professional and Technical Services</u>				
340 Technical Services				185,367.38
Total Purchased Professional and Technical Services				\$185,367.38
500 <u>Other Purchased Services</u>				
520 Insurance – General				100.00
530 Communications				7,281.00
Total Other Purchased Services				\$7,381.00
Total 2330 Tax Assessment and Collection Services				\$192,748.38

LEA : 113365203 Penn Manor SD

Printed 11/28/2023 4:25:00 PM

General Fund (10)				
2350 Legal and Accounting Services	<u>Elementary</u>	<u>Secondary</u>	<u>Federal</u>	<u>Total</u>
300 <u>Purchased Professional and Technical Services</u>				
330 Other Professional Services				40,460.92
Total Purchased Professional and Technical Services				\$40,460.92
Total 2350 Legal and Accounting Services				\$40,460.92

LEA : 113365203 Penn Manor SD

Printed 11/28/2023 4:25:00 PM

General Fund (10)

2360 Office of the Superintendent / Executive Director Services	<u>Elementary</u>	<u>Secondary</u>	<u>Federal</u>	<u>Total</u>
100 <u>Personnel Services – Salaries</u>				
100 Personnel Services – Salaries				587,117.55
Total Personnel Services – Salaries				\$587,117.55
200 <u>Personnel Services – Employee Benefits</u>				
210 Group Insurance – Contracted Provider				1,780.32
220 Social Security Contributions				42,856.00
230 PSERS Retirement Contributions				205,017.24
260 Workers' Compensation				3,900.00
270 Group Insurance – Self-Insurance				100,274.00
Total Personnel Services – Employee Benefits				\$353,827.56
300 <u>Purchased Professional and Technical Services</u>				
330 Other Professional Services				2,700.00
Total Purchased Professional and Technical Services				\$2,700.00
400 <u>Purchased Property Services</u>				
430 Repairs and Maintenance Services				1,475.00
Total Purchased Property Services				\$1,475.00
500 <u>Other Purchased Services</u>				
580 Travel				5,642.01
Total Other Purchased Services				\$5,642.01
600 <u>Supplies</u>				
610 General Supplies				1,016.27
630 Food				21,867.72
Total Supplies				\$22,883.99
800 <u>Other Objects</u>				
810 Dues and Fees				5,388.00
Total Other Objects				\$5,388.00
Total 2360 Office of the Superintendent / Executive Director Services				\$979,034.11

LEA : 113365203 Penn Manor SD

Printed 11/28/2023 4:25:00 PM

General Fund (10)				
2370 Community Relations Services				
	<u>Elementary</u>	<u>Secondary</u>	<u>Federal</u>	<u>Total</u>
100 <u>Personnel Services – Salaries</u>				
100 Personnel Services – Salaries				73,278.40
Total Personnel Services – Salaries				\$73,278.40
200 <u>Personnel Services – Employee Benefits</u>				
210 Group Insurance – Contracted Provider				156.60
220 Social Security Contributions				5,345.46
230 PSERS Retirement Contributions				25,838.02
260 Workers' Compensation				500.00
270 Group Insurance – Self-Insurance				19,421.88
Total Personnel Services – Employee Benefits				\$51,261.96
500 <u>Other Purchased Services</u>				
530 Communications				10,433.66
550 Printing and Binding				6,115.83
580 Travel				341.08
Total Other Purchased Services				\$16,890.57
600 <u>Supplies</u>				
610 General Supplies				2,252.80
630 Food				1,951.19
Total Supplies				\$4,203.99
800 <u>Other Objects</u>				
810 Dues and Fees				135.20
Total Other Objects				\$135.20
Total 2370 Community Relations Services				\$145,770.12

LEA : 113365203 Penn Manor SD

Printed 11/28/2023 4:25:00 PM

General Fund (10)

2380 Office of the Principal Services	Elementary	Secondary	Federal	Total
100 <u>Personnel Services – Salaries</u>				
100 Personnel Services – Salaries	1,196,926.24	1,295,604.27		2,492,530.51
Total Personnel Services – Salaries	\$1,196,926.24	\$1,295,604.27		\$2,492,530.51
200 <u>Personnel Services – Employee Benefits</u>				
210 Group Insurance – Contracted Provider	4,559.95	4,770.30		9,330.25
220 Social Security Contributions	89,295.95	95,345.67		184,641.62
230 PSERS Retirement Contributions	421,363.48	453,544.77		874,908.25
260 Workers' Compensation	8,100.00	7,800.00		15,900.00
270 Group Insurance – Self-Insurance	319,131.57	269,662.39		588,793.96
Total Personnel Services – Employee Benefits	\$842,450.95	\$831,123.13		\$1,673,574.08
500 <u>Other Purchased Services</u>				
580 Travel	325.73	303.92		629.65
Total Other Purchased Services	\$325.73	\$303.92		\$629.65
600 <u>Supplies</u>				
610 General Supplies		7,491.76		7,491.76
630 Food		4,345.57		4,345.57
Total Supplies		\$11,837.33		\$11,837.33
800 <u>Other Objects</u>				
810 Dues and Fees	605.00			605.00
Total Other Objects	\$605.00			\$605.00
Total 2380 Office of the Principal Services	\$2,040,307.92	\$2,138,868.65		\$4,179,176.57

LEA : 113365203 Penn Manor SD

Printed 11/28/2023 4:25:00 PM

General Fund (10)				
2390 Other Administration Services				
	<u>Elementary</u>	<u>Secondary</u>	<u>Federal</u>	<u>Total</u>
100 <u>Personnel Services – Salaries</u>				
100 Personnel Services – Salaries			106,640.04	457,163.58
Total Personnel Services – Salaries			\$106,640.04	\$457,163.58
200 <u>Personnel Services – Employee Benefits</u>				
220 Social Security Contributions			4,078.86	34,145.47
230 PSERS Retirement Contributions			18,736.89	161,191.70
260 Workers’ Compensation				2,300.00
270 Group Insurance – Self-Insurance				2,860.66
Total Personnel Services – Employee Benefits			\$22,815.75	\$200,497.83
300 <u>Purchased Professional and Technical Services</u>				
330 Other Professional Services				2,000.00
Total Purchased Professional and Technical Services				\$2,000.00
400 <u>Purchased Property Services</u>				
430 Repairs and Maintenance Services				5,779.92
Total Purchased Property Services				\$5,779.92
500 <u>Other Purchased Services</u>				
530 Communications				48,908.44
549 Other Advertising/Public Relations				32,644.55
Total Other Purchased Services				\$81,552.99
600 <u>Supplies</u>				
640 Books and Periodicals				276.00
Total Supplies				\$276.00
800 <u>Other Objects</u>				
810 Dues and Fees				850.00
Total Other Objects				\$850.00
Total 2390 Other Administration Services			\$129,455.79	\$748,120.32

LEA : 113365203 Penn Manor SD

Printed 11/28/2023 4:25:00 PM

General Fund (10)				
2400 Support Services – Pupil Health	<u>Elementary</u>	<u>Secondary</u>	<u>Federal</u>	<u>Total</u>
100 <u>Personnel Services – Salaries</u>				
100 Personnel Services – Salaries				585,617.71
Total Personnel Services – Salaries				\$585,617.71
200 <u>Personnel Services – Employee Benefits</u>				
210 Group Insurance – Contracted Provider				1,164.42
220 Social Security Contributions				43,668.43
230 PSERS Retirement Contributions				215,148.43
260 Workers' Compensation				3,900.00
270 Group Insurance – Self-Insurance				45,421.80
Total Personnel Services – Employee Benefits				\$309,303.08
300 <u>Purchased Professional and Technical Services</u>				
330 Other Professional Services				5,000.00
350 Security / Safety Services				11,878.80
Total Purchased Professional and Technical Services				\$16,878.80
400 <u>Purchased Property Services</u>				
410 Cleaning Services				379.27
Total Purchased Property Services				\$379.27
500 <u>Other Purchased Services</u>				
580 Travel				142.75
Total Other Purchased Services				\$142.75
600 <u>Supplies</u>				
610 General Supplies				23,337.34
Total Supplies				\$23,337.34
Total 2400 Support Services – Pupil Health				\$935,658.95

LEA : 113365203 Penn Manor SD

Printed 11/28/2023 4:25:00 PM

General Fund (10)

2420 Medical Services	<u>Elementary</u>	<u>Secondary</u>	<u>Federal</u>	<u>Total</u>
300 <u>Purchased Professional and Technical Services</u>				
330 Other Professional Services				5,000.00
350 Security / Safety Services				11,878.80
Total Purchased Professional and Technical Services				\$16,878.80
400 <u>Purchased Property Services</u>				
410 Cleaning Services				379.27
Total Purchased Property Services				\$379.27
Total 2420 Medical Services				\$17,258.07

LEA : 113365203 Penn Manor SD

Printed 11/28/2023 4:25:00 PM

General Fund (10)

2430 Dental Services	<u>Elementary</u>	<u>Secondary</u>	<u>Federal</u>	<u>Total</u>
100 <u>Personnel Services – Salaries</u>				
100 Personnel Services – Salaries				1,449.00
Total Personnel Services – Salaries				\$1,449.00
200 <u>Personnel Services – Employee Benefits</u>				
220 Social Security Contributions				110.87
Total Personnel Services – Employee Benefits				\$110.87
Total 2430 Dental Services				\$1,559.87

LEA : 113365203 Penn Manor SD

Printed 11/28/2023 4:25:00 PM

General Fund (10)

2440 Nursing Services	<u>Elementary</u>	<u>Secondary</u>	<u>Federal</u>	<u>Total</u>
100 <u>Personnel Services – Salaries</u>				
100 Personnel Services – Salaries				584,168.71
Total Personnel Services – Salaries				\$584,168.71
200 <u>Personnel Services – Employee Benefits</u>				
210 Group Insurance – Contracted Provider				1,164.42
220 Social Security Contributions				43,557.56
230 PSERS Retirement Contributions				215,148.43
260 Workers' Compensation				3,900.00
270 Group Insurance – Self-Insurance				45,421.80
Total Personnel Services – Employee Benefits				\$309,192.21
500 <u>Other Purchased Services</u>				
580 Travel				142.75
Total Other Purchased Services				\$142.75
600 <u>Supplies</u>				
610 General Supplies				23,337.34
Total Supplies				\$23,337.34
Total 2440 Nursing Services				\$916,841.01

LEA : 113365203 Penn Manor SD

Printed 11/28/2023 4:25:00 PM

General Fund (10)				
2500 Support Services – Business	<u>Elementary</u>	<u>Secondary</u>	<u>Federal</u>	<u>Total</u>
100 <u>Personnel Services – Salaries</u>				
100 Personnel Services – Salaries				696,562.31
Total Personnel Services – Salaries				\$696,562.31
200 <u>Personnel Services – Employee Benefits</u>				
210 Group Insurance – Contracted Provider				2,282.84
220 Social Security Contributions				48,221.05
230 PSERS Retirement Contributions				230,513.06
260 Workers' Compensation				3,700.00
270 Group Insurance – Self-Insurance				208,212.14
Total Personnel Services – Employee Benefits				\$492,929.09
300 <u>Purchased Professional and Technical Services</u>				
330 Other Professional Services				28,985.35
Total Purchased Professional and Technical Services				\$28,985.35
400 <u>Purchased Property Services</u>				
430 Repairs and Maintenance Services				5,035.00
490 Other Purchased Property Services				1,768.51
Total Purchased Property Services				\$6,803.51
500 <u>Other Purchased Services</u>				
550 Printing and Binding				5,869.10
580 Travel				1,183.26
Total Other Purchased Services				\$7,052.36
600 <u>Supplies</u>				
610 General Supplies				7,251.94
Total Supplies				\$7,251.94
800 <u>Other Objects</u>				
810 Dues and Fees				2,372.10
Total Other Objects				\$2,372.10
Total 2500 Support Services – Business				\$1,241,956.66

LEA : 113365203 Penn Manor SD

Printed 11/28/2023 4:25:00 PM

General Fund (10)				
2510 Fiscal Services	<u>Elementary</u>	<u>Secondary</u>	<u>Federal</u>	<u>Total</u>
100 <u>Personnel Services – Salaries</u>				
100 Personnel Services – Salaries				696,562.31
Total Personnel Services – Salaries				\$696,562.31
200 <u>Personnel Services – Employee Benefits</u>				
210 Group Insurance – Contracted Provider				2,282.84
220 Social Security Contributions				48,221.05
230 PSERS Retirement Contributions				230,513.06
260 Workers' Compensation				3,700.00
270 Group Insurance – Self-Insurance				208,212.14
Total Personnel Services – Employee Benefits				\$492,929.09
300 <u>Purchased Professional and Technical Services</u>				
330 Other Professional Services				28,985.35
Total Purchased Professional and Technical Services				\$28,985.35
400 <u>Purchased Property Services</u>				
430 Repairs and Maintenance Services				5,035.00
490 Other Purchased Property Services				1,768.51
Total Purchased Property Services				\$6,803.51
500 <u>Other Purchased Services</u>				
580 Travel				1,183.26
Total Other Purchased Services				\$1,183.26
600 <u>Supplies</u>				
610 General Supplies				7,251.94
Total Supplies				\$7,251.94
800 <u>Other Objects</u>				
810 Dues and Fees				2,372.10
Total Other Objects				\$2,372.10
Total 2510 Fiscal Services				\$1,236,087.56

LEA : 113365203 Penn Manor SD

Printed 11/28/2023 4:25:00 PM

General Fund (10)				
2519 Other Fiscal Services	<u>Elementary</u>	<u>Secondary</u>	<u>Federal</u>	<u>Total</u>
100 <u>Personnel Services – Salaries</u>				
100 Personnel Services – Salaries				696,562.31
Total Personnel Services – Salaries				\$696,562.31
200 <u>Personnel Services – Employee Benefits</u>				
210 Group Insurance – Contracted Provider				2,282.84
220 Social Security Contributions				48,221.05
230 PSERS Retirement Contributions				230,513.06
260 Workers' Compensation				3,700.00
270 Group Insurance – Self-Insurance				208,212.14
Total Personnel Services – Employee Benefits				\$492,929.09
300 <u>Purchased Professional and Technical Services</u>				
330 Other Professional Services				28,985.35
Total Purchased Professional and Technical Services				\$28,985.35
400 <u>Purchased Property Services</u>				
430 Repairs and Maintenance Services				5,035.00
490 Other Purchased Property Services				1,768.51
Total Purchased Property Services				\$6,803.51
500 <u>Other Purchased Services</u>				
580 Travel				1,183.26
Total Other Purchased Services				\$1,183.26
600 <u>Supplies</u>				
610 General Supplies				7,251.94
Total Supplies				\$7,251.94
800 <u>Other Objects</u>				
810 Dues and Fees				2,372.10
Total Other Objects				\$2,372.10
Total 2519 Other Fiscal Services				\$1,236,087.56

LEA : 113365203 Penn Manor SD

Printed 11/28/2023 4:25:00 PM

General Fund (10)

2540 Printing, Publishing and Duplicating Services	<u>Elementary</u>	<u>Secondary</u>	<u>Federal</u>	<u>Total</u>
500 <u>Other Purchased Services</u>				
550 Printing and Binding				5,869.10
Total Other Purchased Services				\$5,869.10
Total 2540 Printing, Publishing and Duplicating Services				\$5,869.10

LEA : 113365203 Penn Manor SD

Printed 11/28/2023 4:25:00 PM

General Fund (10)

2600 Operation and Maintenance of Plant Services	<u>Elementary</u>	<u>Secondary</u>	<u>Federal</u>	<u>Total</u>
100 <u>Personnel Services – Salaries</u>				
100 Personnel Services – Salaries				1,880,757.12
Total Personnel Services – Salaries				\$1,880,757.12
200 <u>Personnel Services – Employee Benefits</u>				
210 Group Insurance – Contracted Provider				4,767.27
220 Social Security Contributions				139,141.06
230 PSERS Retirement Contributions				681,360.73
260 Workers' Compensation				13,500.00
270 Group Insurance – Self-Insurance				622,960.99
Total Personnel Services – Employee Benefits				\$1,461,730.05
300 <u>Purchased Professional and Technical Services</u>				
350 Security / Safety Services				153,372.26
Total Purchased Professional and Technical Services				\$153,372.26
400 <u>Purchased Property Services</u>				
410 Cleaning Services				83,711.36
420 Utility Services				252,257.79
430 Repairs and Maintenance Services				591,034.77
Total Purchased Property Services				\$927,003.92
500 <u>Other Purchased Services</u>				
523 General Property and Liability Insurance				368,216.00
530 Communications				20,946.16
580 Travel				544.58
591 Services Purchased Locally				19,357.76
Total Other Purchased Services				\$409,064.50
600 <u>Supplies</u>				
610 General Supplies	203,181.60	220,709.92		423,891.52
620 Energy				1,215,538.46
650 Supplies & Fees – Technology Related				27,694.07
Total Supplies	\$203,181.60	\$220,709.92		\$1,667,124.05
700 <u>Property</u>				
752 Capital Equipment – Original and Additional				129,869.00
Total Property				\$129,869.00
800 <u>Other Objects</u>				
810 Dues and Fees				170.00
Total Other Objects				\$170.00
Total 2600 Operation and Maintenance of Plant Services	\$203,181.60	\$220,709.92		\$6,629,090.90

LEA : 113365203 Penn Manor SD

Printed 11/28/2023 4:25:00 PM

General Fund (10)				
2620 Operation of Buildings Services				
	<u>Elementary</u>	<u>Secondary</u>	<u>Federal</u>	<u>Total</u>
100 <u>Personnel Services – Salaries</u>				
100 Personnel Services – Salaries				1,880,757.12
Total Personnel Services – Salaries				\$1,880,757.12
200 <u>Personnel Services – Employee Benefits</u>				
210 Group Insurance – Contracted Provider				4,767.27
220 Social Security Contributions				139,141.06
230 PSERS Retirement Contributions				681,360.73
260 Workers' Compensation				13,500.00
270 Group Insurance – Self-Insurance				622,960.99
Total Personnel Services – Employee Benefits				\$1,461,730.05
300 <u>Purchased Professional and Technical Services</u>				
350 Security / Safety Services				44,482.01
Total Purchased Professional and Technical Services				\$44,482.01
400 <u>Purchased Property Services</u>				
410 Cleaning Services				83,711.36
420 Utility Services				252,257.79
430 Repairs and Maintenance Services				551,569.88
Total Purchased Property Services				\$887,539.03
500 <u>Other Purchased Services</u>				
523 General Property and Liability Insurance				368,216.00
530 Communications				20,946.16
580 Travel				544.58
Total Other Purchased Services				\$389,706.74
600 <u>Supplies</u>				
610 General Supplies	203,181.60	220,709.92		423,891.52
620 Energy				1,215,538.46
650 Supplies & Fees – Technology Related				27,694.07
Total Supplies				\$1,667,124.05
700 <u>Property</u>				
752 Capital Equipment – Original and Additional				81,752.00
Total Property				\$81,752.00
800 <u>Other Objects</u>				
810 Dues and Fees				170.00
Total Other Objects				\$170.00
Total 2620 Operation of Buildings Services	\$203,181.60	\$220,709.92		\$6,413,261.00

LEA : 113365203 Penn Manor SD

Printed 11/28/2023 4:25:00 PM

General Fund (10)

2650 Vehicle Operation and Maintenance Services (Other Than Student Transportation Vehicles)	<u>Elementary</u>	<u>Secondary</u>	<u>Federal</u>	<u>Total</u>
400 <u>Purchased Property Services</u>				
430 Repairs and Maintenance Services				39,464.89
Total Purchased Property Services				\$39,464.89
700 <u>Property</u>				
752 Capital Equipment – Original and Additional				48,117.00
Total Property				\$48,117.00
Total 2650 Vehicle Operation and Maintenance Services (Other Than Student Transportation Vehicles)				\$87,581.89

LEA : 113365203 Penn Manor SD

Printed 11/28/2023 4:25:00 PM

General Fund (10)

2660 Safety and Security Services	<u>Elementary</u>	<u>Secondary</u>	<u>Federal</u>	<u>Total</u>
300 <u>Purchased Professional and Technical Services</u>				
350 Security / Safety Services				108,890.25
Total Purchased Professional and Technical Services				\$108,890.25
500 <u>Other Purchased Services</u>				
591 Services Purchased Locally				19,357.76
Total Other Purchased Services				\$19,357.76
Total 2660 Safety and Security Services				\$128,248.01

LEA : 113365203 Penn Manor SD

Printed 11/28/2023 4:25:00 PM

General Fund (10)					
2700 Student Transportation Services		<u>Elementary</u>	<u>Secondary</u>	<u>Federal</u>	<u>Total</u>
100 <u>Personnel Services – Salaries</u>					
100 Personnel Services – Salaries				5,240.05	77,010.48
Total Personnel Services – Salaries				\$5,240.05	\$77,010.48
200 <u>Personnel Services – Employee Benefits</u>					
210 Group Insurance – Contracted Provider					152.52
220 Social Security Contributions				196.62	5,852.39
230 PSERS Retirement Contributions					24,899.40
260 Workers' Compensation					500.00
270 Group Insurance – Self-Insurance					1,939.91
Total Personnel Services – Employee Benefits				\$196.62	\$33,344.22
300 <u>Purchased Professional and Technical Services</u>					
330 Other Professional Services					1,140.00
Total Purchased Professional and Technical Services					\$1,140.00
400 <u>Purchased Property Services</u>					
430 Repairs and Maintenance Services					9,453.38
Total Purchased Property Services					\$9,453.38
500 <u>Other Purchased Services</u>					
513 Contracted Carriers				146,255.44	4,784,071.11
516 Student Transportation Services From the IU					11,699.21
Total Other Purchased Services				\$146,255.44	\$4,795,770.32
600 <u>Supplies</u>					
610 General Supplies					(348.59)
650 Supplies & Fees – Technology Related					39,340.00
Total Supplies					\$38,991.41
Total 2700 Student Transportation Services				\$151,692.11	\$4,955,709.81

LEA : 113365203 Penn Manor SD

Printed 11/28/2023 4:25:00 PM

General Fund (10)

2710 Supervision of Student Transportation Services	<u>Elementary</u>	<u>Secondary</u>	<u>Federal</u>	<u>Total</u>
100 <u>Personnel Services – Salaries</u>				
100 Personnel Services – Salaries				71,770.43
Total Personnel Services – Salaries				\$71,770.43
200 <u>Personnel Services – Employee Benefits</u>				
210 Group Insurance – Contracted Provider				152.52
220 Social Security Contributions				5,655.77
230 PSERS Retirement Contributions				24,899.40
260 Workers' Compensation				500.00
270 Group Insurance – Self-Insurance				1,939.91
Total Personnel Services – Employee Benefits				\$33,147.60
Total 2710 Supervision of Student Transportation Services				\$104,918.03

LEA : 113365203 Penn Manor SD

Printed 11/28/2023 4:25:00 PM

General Fund (10)

2711 Supervision of Student Transportation Services – Head of Component	<u>Elementary</u>	<u>Secondary</u>	<u>Federal</u>	<u>Total</u>
100 <u>Personnel Services – Salaries</u>				
100 Personnel Services – Salaries				71,770.43
Total Personnel Services – Salaries				\$71,770.43
200 <u>Personnel Services – Employee Benefits</u>				
210 Group Insurance – Contracted Provider				152.52
220 Social Security Contributions				5,655.77
230 PSERS Retirement Contributions				24,899.40
260 Workers' Compensation				500.00
270 Group Insurance – Self-Insurance				1,939.91
Total Personnel Services – Employee Benefits				\$33,147.60
Total 2711 Supervision of Student Transportation Services – Head of Component				\$104,918.03

LEA : 113365203 Penn Manor SD

Printed 11/28/2023 4:25:00 PM

General Fund (10)				
2720 Vehicle Operation Services	Elementary	Secondary	Federal	Total
100 <u>Personnel Services – Salaries</u>				
100 Personnel Services – Salaries			5,240.05	5,240.05
Total Personnel Services – Salaries			\$5,240.05	\$5,240.05
200 <u>Personnel Services – Employee Benefits</u>				
220 Social Security Contributions			196.62	196.62
Total Personnel Services – Employee Benefits			\$196.62	\$196.62
400 <u>Purchased Property Services</u>				
430 Repairs and Maintenance Services				9,453.38
Total Purchased Property Services				\$9,453.38
500 <u>Other Purchased Services</u>				
513 Contracted Carriers			146,255.44	4,178,606.32
516 Student Transportation Services From the IU				11,699.21
Total Other Purchased Services			\$146,255.44	\$4,190,305.53
600 <u>Supplies</u>				
610 General Supplies				(348.59)
650 Supplies & Fees – Technology Related				39,340.00
Total Supplies				\$38,991.41
Total 2720 Vehicle Operation Services			\$151,692.11	\$4,244,186.99

LEA : 113365203 Penn Manor SD

Printed 11/28/2023 4:25:00 PM

General Fund (10)				
2750 Nonpublic Transportation	<u>Elementary</u>	<u>Secondary</u>	<u>Federal</u>	<u>Total</u>
500 <u>Other Purchased Services</u>				
513 Contracted Carriers				605,464.79
Total Other Purchased Services				\$605,464.79
Total 2750 Nonpublic Transportation				\$605,464.79

LEA : 113365203 Penn Manor SD

Printed 11/28/2023 4:25:00 PM

General Fund (10)

2790 Other Student Transportation Services	<u>Elementary</u>	<u>Secondary</u>	<u>Federal</u>	<u>Total</u>
300 <u>Purchased Professional and Technical Services</u>				
330 Other Professional Services				1,140.00
Total Purchased Professional and Technical Services				\$1,140.00
Total 2790 Other Student Transportation Services				\$1,140.00

LEA : 113365203 Penn Manor SD

Printed 11/28/2023 4:25:00 PM

General Fund (10)					
2800 Support Services – Central		Elementary	Secondary	Federal	Total
100 <u>Personnel Services – Salaries</u>					
100 Personnel Services – Salaries					1,062,070.99
Total Personnel Services – Salaries					\$1,062,070.99
200 <u>Personnel Services – Employee Benefits</u>					
210 Group Insurance – Contracted Provider					2,558.75
220 Social Security Contributions					79,640.80
230 PSERS Retirement Contributions					381,892.39
240 Tuition Reimbursement					13,595.00
260 Workers' Compensation					6,200.00
270 Group Insurance – Self-Insurance					176,252.81
Total Personnel Services – Employee Benefits					\$660,139.75
300 <u>Purchased Professional and Technical Services</u>					
329 Professional Educational Services – Other					14,210.20
330 Other Professional Services					16,488.60
340 Technical Services					7,759.47
360 Employee Training and Development Services					29,580.96
Total Purchased Professional and Technical Services					\$68,039.23
400 <u>Purchased Property Services</u>					
430 Repairs and Maintenance Services					245,665.96
Total Purchased Property Services					\$245,665.96
500 <u>Other Purchased Services</u>					
530 Communications					31,551.23
580 Travel					2,631.32
Total Other Purchased Services					\$34,182.55
600 <u>Supplies</u>					
610 General Supplies					9,396.86
Total Supplies					\$9,396.86
800 <u>Other Objects</u>					
810 Dues and Fees					1,524.00
Total Other Objects					\$1,524.00
Total 2800 Support Services – Central					\$2,081,019.34

LEA : 113365203 Penn Manor SD

Printed 11/28/2023 4:25:00 PM

General Fund (10)				
2820 Information Services	<u>Elementary</u>	<u>Secondary</u>	<u>Federal</u>	<u>Total</u>
100 <u>Personnel Services – Salaries</u>				
100 Personnel Services – Salaries				930,571.05
Total Personnel Services – Salaries				\$930,571.05
200 <u>Personnel Services – Employee Benefits</u>				
210 Group Insurance – Contracted Provider				2,558.75
220 Social Security Contributions				69,579.01
230 PSERS Retirement Contributions				335,966.17
260 Workers' Compensation				6,200.00
270 Group Insurance – Self-Insurance				174,252.81
Total Personnel Services – Employee Benefits				\$588,556.74
300 <u>Purchased Professional and Technical Services</u>				
329 Professional Educational Services – Other				14,210.20
Total Purchased Professional and Technical Services				\$14,210.20
400 <u>Purchased Property Services</u>				
430 Repairs and Maintenance Services				22,133.39
Total Purchased Property Services				\$22,133.39
500 <u>Other Purchased Services</u>				
580 Travel				2,262.89
Total Other Purchased Services				\$2,262.89
800 <u>Other Objects</u>				
810 Dues and Fees				395.00
Total Other Objects				\$395.00
Total 2820 Information Services				\$1,558,129.27

LEA : 113365203 Penn Manor SD

Printed 11/28/2023 4:25:00 PM

General Fund (10)					
2822 Internal Information Services		<u>Elementary</u>	<u>Secondary</u>	<u>Federal</u>	<u>Total</u>
100 <u>Personnel Services – Salaries</u>					
100 Personnel Services – Salaries					930,571.05
Total Personnel Services – Salaries					\$930,571.05
200 <u>Personnel Services – Employee Benefits</u>					
210 Group Insurance – Contracted Provider					2,558.75
220 Social Security Contributions					69,579.01
230 PSERS Retirement Contributions					335,966.17
260 Workers' Compensation					6,200.00
270 Group Insurance – Self-Insurance					174,252.81
Total Personnel Services – Employee Benefits					\$588,556.74
300 <u>Purchased Professional and Technical Services</u>					
329 Professional Educational Services – Other					14,210.20
Total Purchased Professional and Technical Services					\$14,210.20
400 <u>Purchased Property Services</u>					
430 Repairs and Maintenance Services					22,133.39
Total Purchased Property Services					\$22,133.39
500 <u>Other Purchased Services</u>					
580 Travel					2,262.89
Total Other Purchased Services					\$2,262.89
800 <u>Other Objects</u>					
810 Dues and Fees					395.00
Total Other Objects					\$395.00
Total 2822 Internal Information Services					\$1,558,129.27

LEA : 113365203 Penn Manor SD

Printed 11/28/2023 4:25:00 PM

General Fund (10)				
2830 Staff Services	<u>Elementary</u>	<u>Secondary</u>	<u>Federal</u>	<u>Total</u>
100 <u>Personnel Services – Salaries</u>				
100 Personnel Services – Salaries				131,499.94
Total Personnel Services – Salaries				\$131,499.94
200 <u>Personnel Services – Employee Benefits</u>				
220 Social Security Contributions				10,061.79
230 PSERS Retirement Contributions				45,926.22
240 Tuition Reimbursement				13,595.00
270 Group Insurance – Self-Insurance				2,000.00
Total Personnel Services – Employee Benefits				\$71,583.01
300 <u>Purchased Professional and Technical Services</u>				
330 Other Professional Services				12,033.60
360 Employee Training and Development Services				29,580.96
Total Purchased Professional and Technical Services				\$41,614.56
500 <u>Other Purchased Services</u>				
580 Travel				368.43
Total Other Purchased Services				\$368.43
600 <u>Supplies</u>				
610 General Supplies				6,621.96
Total Supplies				\$6,621.96
800 <u>Other Objects</u>				
810 Dues and Fees				1,129.00
Total Other Objects				\$1,129.00
Total 2830 Staff Services				\$252,816.90

LEA : 113365203 Penn Manor SD

Printed 11/28/2023 4:25:00 PM

General Fund (10)

2831 Supervision of Staff Services	<u>Elementary</u>	<u>Secondary</u>	<u>Federal</u>	<u>Total</u>
100 <u>Personnel Services – Salaries</u>				
100 Personnel Services – Salaries				131,499.94
Total Personnel Services – Salaries				\$131,499.94
200 <u>Personnel Services – Employee Benefits</u>				
220 Social Security Contributions				10,061.79
230 PSERS Retirement Contributions				45,926.22
270 Group Insurance – Self-Insurance				2,000.00
Total Personnel Services – Employee Benefits				\$57,988.01
500 <u>Other Purchased Services</u>				
580 Travel				368.43
Total Other Purchased Services				\$368.43
600 <u>Supplies</u>				
610 General Supplies				6,621.96
Total Supplies				\$6,621.96
Total 2831 Supervision of Staff Services				\$196,478.34

LEA : 113365203 Penn Manor SD

Printed 11/28/2023 4:25:00 PM

General Fund (10)

2832 Recruitment and Placement Services	<u>Elementary</u>	<u>Secondary</u>	<u>Federal</u>	<u>Total</u>
300 <u>Purchased Professional and Technical Services</u>				
330 Other Professional Services				2,081.60
Total Purchased Professional and Technical Services				\$2,081.60
800 <u>Other Objects</u>				
810 Dues and Fees				1,129.00
Total Other Objects				\$1,129.00
Total 2832 Recruitment and Placement Services				\$3,210.60

LEA : 113365203 Penn Manor SD

Printed 11/28/2023 4:25:00 PM

General Fund (10)

2834 Staff Development Services – Non-Instructional, Certified Staff Only				<u>Elementary</u>	<u>Secondary</u>	<u>Federal</u>	<u>Total</u>
200 <u>Personnel Services – Employee Benefits</u>							
240 Tuition Reimbursement							7,635.00
Total Personnel Services – Employee Benefits							\$7,635.00
300 <u>Purchased Professional and Technical Services</u>							
360 Employee Training and Development Services							18,030.23
Total Purchased Professional and Technical Services							\$18,030.23
Total 2834 Staff Development Services – Non-Instructional, Certified Staff Only							\$25,665.23

LEA : 113365203 Penn Manor SD

Printed 11/28/2023 4:25:00 PM

General Fund (10)

2836 Staff Development Services – Non-Instructional, Non-Certified Staff Only	<u>Elementary</u>	<u>Secondary</u>	<u>Federal</u>	<u>Total</u>
200 <u>Personnel Services – Employee Benefits</u>				
240 Tuition Reimbursement				5,960.00
Total Personnel Services – Employee Benefits				\$5,960.00
300 <u>Purchased Professional and Technical Services</u>				
360 Employee Training and Development Services				11,550.73
Total Purchased Professional and Technical Services				\$11,550.73
Total 2836 Staff Development Services – Non-Instructional, Non-Certified Staff Only				\$17,510.73

LEA : 113365203 Penn Manor SD

Printed 11/28/2023 4:25:00 PM

General Fund (10)

2839 Other Staff Services

Elementary Secondary Federal Total

300 Purchased Professional and Technical Services

330 Other Professional Services 9,952.00

Total Purchased Professional and Technical Services \$9,952.00

Total 2839 Other Staff Services \$9,952.00

LEA : 113365203 Penn Manor SD

Printed 11/28/2023 4:25:00 PM

General Fund (10)

2840 Data Processing Services	<u>Elementary</u>	<u>Secondary</u>	<u>Federal</u>	<u>Total</u>
300 <u>Purchased Professional and Technical Services</u>				
330 Other Professional Services				4,455.00
340 Technical Services				7,759.47
Total Purchased Professional and Technical Services				\$12,214.47
400 <u>Purchased Property Services</u>				
430 Repairs and Maintenance Services				223,532.57
Total Purchased Property Services				\$223,532.57
500 <u>Other Purchased Services</u>				
530 Communications				31,551.23
Total Other Purchased Services				\$31,551.23
600 <u>Supplies</u>				
610 General Supplies				2,774.90
Total Supplies				\$2,774.90
Total 2840 Data Processing Services				\$270,073.17

LEA : 113365203 Penn Manor SD

Printed 11/28/2023 4:25:00 PM

General Fund (10)

2900 Other Support Services	<u>Elementary</u>	<u>Secondary</u>	<u>Federal</u>	<u>Total</u>
500 <u>Other Purchased Services</u>				
595 IU Payments By Withholding				39,017.82
596 Direct Payments To Intermediate Units				4,858.68
Total Other Purchased Services				\$43,876.50
Total 2900 Other Support Services				\$43,876.50

LEA : 113365203 Penn Manor SD

Printed 11/28/2023 4:25:00 PM

General Fund (10)

2910 Support Services Not Listed Elsewhere In the 2000 Series

Elementary Secondary Federal Total

500 <u>Other Purchased Services</u>				
595 IU Payments By Withholding				39,017.82
596 Direct Payments To Intermediate Units				4,858.68
Total Other Purchased Services				\$43,876.50
Total 2910 Support Services Not Listed Elsewhere In the 2000 Series				\$43,876.50

LEA : 113365203 Penn Manor SD

Printed 11/28/2023 4:25:06 PM

General Fund (10)

3000 Operation of Non-Instructional Services		Total
100	<u>Personnel Services – Salaries</u>	
100	Personnel Services – Salaries	897,732.46
Total Personnel Services – Salaries		\$897,732.46
200	<u>Personnel Services – Employee Benefits</u>	
210	Group Insurance – Contracted Provider	582.26
220	Social Security Contributions	67,753.52
230	PSERS Retirement Contributions	326,238.43
250	Unemployment Compensation	1,850.44
260	Workers' Compensation	6,200.00
270	Group Insurance – Self-Insurance	18,989.06
Total Personnel Services – Employee Benefits		\$421,613.71
300	<u>Purchased Professional and Technical Services</u>	
330	Other Professional Services	10,720.00
350	Security / Safety Services	14,938.80
390	Other Purchased Professional and Technical Services	58,756.50
Total Purchased Professional and Technical Services		\$84,415.30
400	<u>Purchased Property Services</u>	
430	Repairs and Maintenance Services	20,670.92
440	Rentals	47,066.95
Total Purchased Property Services		\$67,737.87
500	<u>Other Purchased Services</u>	
520	Insurance – General	20,725.00
580	Travel	4,720.77
Total Other Purchased Services		\$25,445.77
600	<u>Supplies</u>	
610	General Supplies	167,857.88
630	Food	9,212.62
Total Supplies		\$177,070.50
800	<u>Other Objects</u>	
810	Dues and Fees	6,921.22
860	Grants To Municipal and Community Service Organizations	48,000.00
890	Miscellaneous Expenditures	13,201.00
Total Other Objects		\$68,122.22
Total 3000 Operation of Non-Instructional Services		\$1,742,137.83

LEA : 113365203 Penn Manor SD

Printed 11/28/2023 4:25:06 PM

General Fund (10)				
3200 Student Activities				
	<u>Elementary</u>	<u>Secondary</u>	<u>Federal</u>	<u>Total</u>
100 <u>Personnel Services – Salaries</u>				
100 Personnel Services – Salaries				892,217.16
Total Personnel Services – Salaries				\$892,217.16
200 <u>Personnel Services – Employee Benefits</u>				
210 Group Insurance – Contracted Provider				582.26
220 Social Security Contributions				67,499.23
230 PSERS Retirement Contributions				325,213.04
250 Unemployment Compensation				1,850.44
260 Workers' Compensation				6,200.00
270 Group Insurance – Self-Insurance				18,989.06
Total Personnel Services – Employee Benefits				\$420,334.03
300 <u>Purchased Professional and Technical Services</u>				
330 Other Professional Services				10,720.00
350 Security / Safety Services				14,938.80
390 Other Purchased Professional and Technical Services				58,756.50
Total Purchased Professional and Technical Services				\$84,415.30
400 <u>Purchased Property Services</u>				
430 Repairs and Maintenance Services				20,670.92
440 Rentals				47,066.95
Total Purchased Property Services				\$67,737.87
500 <u>Other Purchased Services</u>				
520 Insurance – General				20,725.00
580 Travel				4,720.77
Total Other Purchased Services				\$25,445.77
600 <u>Supplies</u>				
610 General Supplies				163,908.32
630 Food				9,212.62
Total Supplies				\$173,120.94
800 <u>Other Objects</u>				
810 Dues and Fees				6,921.22
860 Grants To Municipal and Community Service Organizations				48,000.00
890 Miscellaneous Expenditures				11,351.00
Total Other Objects				\$66,272.22
Total 3200 Student Activities				\$1,729,543.29

LEA : 113365203 Penn Manor SD

Printed 11/28/2023 4:25:06 PM

General Fund (10)

3300 Community Services

	<u>Elementary</u>	<u>Secondary</u>	<u>Federal</u>	<u>Total</u>
100 <u>Personnel Services – Salaries</u>				
100 Personnel Services – Salaries			4,220.30	5,515.30
Total Personnel Services – Salaries			\$4,220.30	\$5,515.30
200 <u>Personnel Services – Employee Benefits</u>				
220 Social Security Contributions			159.07	254.29
230 PSERS Retirement Contributions			568.81	1,025.39
Total Personnel Services – Employee Benefits			\$727.88	\$1,279.68
600 <u>Supplies</u>				
610 General Supplies			2,483.23	2,483.23
Total Supplies			\$2,483.23	\$2,483.23
Total 3300 Community Services			\$7,431.41	\$9,278.21

LEA : 113365203 Penn Manor SD

Printed 11/28/2023 4:25:06 PM

General Fund (10)				
3400 Scholarships and Awards	<u>Elementary</u>	<u>Secondary</u>	<u>Federal</u>	<u>Total</u>
600 <u>Supplies</u>				
610 General Supplies				1,466.33
Total Supplies				\$1,466.33
800 <u>Other Objects</u>				
890 Miscellaneous Expenditures				1,850.00
Total Other Objects				\$1,850.00
Total 3400 Scholarships and Awards				\$3,316.33

LEA : 113365203 Penn Manor SD

Printed 11/28/2023 4:25:08 PM

General Fund (10)	
4000 Facilities Acquisition, Construction and Improvement Services	<u>Total</u>
300 <u>Purchased Professional and Technical Services</u>	
330 Other Professional Services	2,500.00
Total Purchased Professional and Technical Services	\$2,500.00
Total 4000 Facilities Acquisition, Construction and Improvement Services	\$2,500.00

LEA : 113365203 Penn Manor SD

Printed 11/28/2023 4:25:08 PM

General Fund (10)

4400 Architecture and Engineering Services / Educational Specifications – Improvements	<u>Elementary</u>	<u>Secondary</u>	<u>Federal</u>	<u>Total</u>
300 <u>Purchased Professional and Technical Services</u>				
330 Other Professional Services				2,500.00
Total Purchased Professional and Technical Services				\$2,500.00
Total 4400 Architecture and Engineering Services / Educational Specifications – Improvements				\$2,500.00

LEA : 113365203 Penn Manor SD

Printed 11/28/2023 4:25:13 PM

General Fund (10)

5000 Other Expenditures and Financing Uses

Total

900 Other Uses of Funds

932 Capital Reserve Fund Transfers Applicable To Fund 32	3,800,000.00
939 Other Fund Transfers	9,138,507.50

Total Other Uses of Funds	\$12,938,507.50
Total 5000 Other Expenditures and Financing Uses	\$12,938,507.50

LEA : 113365203 Penn Manor SD

Printed 11/28/2023 4:25:13 PM

General Fund (10)

5200 Interfund Transfers – Out

Elementary

Secondary

Federal

Total

900 Other Uses of Funds

932 Capital Reserve Fund Transfers Applicable To Fund 32

3,800,000.00

939 Other Fund Transfers

9,138,507.50

Total Other Uses of Funds				\$12,938,507.50
Total 5200 Interfund Transfers – Out				\$12,938,507.50

LEA : 113365203 Penn Manor SD

Printed 11/28/2023 4:25:13 PM

General Fund (10)

5230 Capital Projects Fund Transfers	<u>Elementary</u>	<u>Secondary</u>	<u>Federal</u>	<u>Total</u>
900 <u>Other Uses of Funds</u>				
932 Capital Reserve Fund Transfers Applicable To Fund 32				3,800,000.00
Total Other Uses of Funds				\$3,800,000.00
Total 5230 Capital Projects Fund Transfers				\$3,800,000.00

LEA : 113365203 Penn Manor SD

Printed 11/28/2023 4:25:13 PM

General Fund (10)

5240 Debt Service Fund Transfers	<u>Elementary</u>	<u>Secondary</u>	<u>Federal</u>	<u>Total</u>
900 <u>Other Uses of Funds</u>				
939 Other Fund Transfers				9,138,507.50
Total Other Uses of Funds				\$9,138,507.50
Total 5240 Debt Service Fund Transfers				\$9,138,507.50

LEA : 113365203 Penn Manor SD

Printed 11/28/2023 4:25:04 PM

Capital Reserve Fund - § 1431 (32)

2000 Support Services

Total

700 Property

752 Capital Equipment – Original and Additional

118,129.00

Total Property	\$118,129.00
Total 2000 Support Services	\$118,129.00

LEA : 113365203 Penn Manor SD

Printed 11/28/2023 4:25:04 PM

Capital Reserve Fund - § 1431 (32)

2600 Operation and Maintenance of Plant Services	<u>Elementary</u>	<u>Secondary</u>	<u>Federal</u>	<u>Total</u>
700 <u>Property</u>				
752 Capital Equipment – Original and Additional				118,129.00
Total Property				\$118,129.00
Total 2600 Operation and Maintenance of Plant Services				\$118,129.00

LEA : 113365203 Penn Manor SD

Printed 11/28/2023 4:25:04 PM

Capital Reserve Fund - § 1431 (32)

2650 Vehicle Operation and Maintenance Services (Other Than Student Transportation Vehicles)	<u>Elementary</u>	<u>Secondary</u>	<u>Federal</u>	<u>Total</u>
700 <u>Property</u>				
752 Capital Equipment – Original and Additional				118,129.00
Total Property				\$118,129.00
Total 2650 Vehicle Operation and Maintenance Services (Other Than Student Transportation Vehicles)				\$118,129.00

LEA : 113365203 Penn Manor SD

Printed 11/28/2023 4:25:11 PM

Capital Reserve Fund - § 1431 (32)

4000 Facilities Acquisition, Construction and Improvement Services		<u>Total</u>
300 <u>Purchased Professional and Technical Services</u>		
330 Other Professional Services		314,632.00
Total Purchased Professional and Technical Services		\$314,632.00
400 <u>Purchased Property Services</u>		
430 Repairs and Maintenance Services		3,839,452.00
Total Purchased Property Services		\$3,839,452.00
600 <u>Supplies</u>		
610 General Supplies		599,728.00
Total Supplies		\$599,728.00
700 <u>Property</u>		
752 Capital Equipment – Original and Additional		1,910,521.00
758 Capitalized Technology Software - Original		103,310.00
Total Property		\$2,013,831.00
Total 4000 Facilities Acquisition, Construction and Improvement Services		\$6,767,643.00

LEA : 113365203 Penn Manor SD

Printed 11/28/2023 4:25:11 PM

Capital Reserve Fund - § 1431 (32)

4400 Architecture and Engineering Services / Educational Specifications – Improvements	<u>Elementary</u>	<u>Secondary</u>	<u>Federal</u>	<u>Total</u>
300 <u>Purchased Professional and Technical Services</u>				
330 Other Professional Services				314,632.00
Total Purchased Professional and Technical Services				\$314,632.00
Total 4400 Architecture and Engineering Services / Educational Specifications – Improvements				\$314,632.00

LEA : 113365203 Penn Manor SD

Printed 11/28/2023 4:25:11 PM

Capital Reserve Fund - § 1431 (32)

4600 Existing Building Improvement Services	<u>Elementary</u>	<u>Secondary</u>	<u>Federal</u>	<u>Total</u>
400 <u>Purchased Property Services</u>				
430 Repairs and Maintenance Services				3,839,452.00
Total Purchased Property Services				\$3,839,452.00
600 <u>Supplies</u>				
610 General Supplies				599,728.00
Total Supplies				\$599,728.00
700 <u>Property</u>				
752 Capital Equipment – Original and Additional				1,910,521.00
758 Capitalized Technology Software - Original				103,310.00
Total Property				\$2,013,831.00
Total 4600 Existing Building Improvement Services				\$6,453,011.00

LEA : 113365203 Penn Manor SD

Printed 11/28/2023 4:25:15 PM

Debt Service Fund (40)

5000 Other Expenditures and Financing Uses

Total

800 <u>Other Objects</u>	
830 Interest	4,213,507.50
Total Other Objects	\$4,213,507.50
900 <u>Other Uses of Funds</u>	
910 Redemption of Principal	4,925,000.00
Total Other Uses of Funds	\$4,925,000.00
Total 5000 Other Expenditures and Financing Uses	\$9,138,507.50

LEA : 113365203 Penn Manor SD

Printed 11/28/2023 4:25:15 PM

Debt Service Fund (40)

5100 Debt Service / Other Expenditures and Financing Uses	<u>Elementary</u>	<u>Secondary</u>	<u>Federal</u>	<u>Total</u>
800 <u>Other Objects</u>				
830 Interest				4,213,507.50
Total Other Objects				\$4,213,507.50
900 <u>Other Uses of Funds</u>				
910 Redemption of Principal				4,925,000.00
Total Other Uses of Funds				\$4,925,000.00
Total 5100 Debt Service / Other Expenditures and Financing Uses				\$9,138,507.50

LEA : 113365203 Penn Manor SD

Printed 11/28/2023 4:25:15 PM

Debt Service Fund (40)

5110 Debt Service	<u>Elementary</u>	<u>Secondary</u>	<u>Federal</u>	<u>Total</u>
800 <u>Other Objects</u>				
830 Interest				4,213,507.50
Total Other Objects				\$4,213,507.50
900 <u>Other Uses of Funds</u>				
910 Redemption of Principal				4,925,000.00
Total Other Uses of Funds				\$4,925,000.00
Total 5110 Debt Service				\$9,138,507.50

LEA : 113365203 Penn Manor SD

Printed 11/28/2023 4:25:17 PM

	<u>General Fund(10)</u>	<u>Student Sponsored Activity Fund(21)</u>	<u>Public Purpose Trust(27)</u>	<u>Other Compt Approved (28)</u>	<u>Athletic / Activity(29)</u>
1000 Instruction					
1100 Regular Programs - Elementary / Secondary	41,521,087.27				
1200 Special Programs - Elementary / Secondary	16,753,008.24				
1300 Vocational Education	2,404,602.96				
1400 Other Instructional Programs - Elementary / Secondary	324,544.03				
1500 Nonpublic School Programs	14,467.47				
Total Instruction	\$61,017,709.97				
2000 Support Services					
2100 Support Services - Students	3,263,341.96				
2200 Support Services - Instructional Staff	1,184,626.08				
2300 Support Services - Administration	6,307,871.94				
2400 Support Services - Pupil Health	935,658.95				
2500 Support Services - Business	1,241,956.66				
2600 Operation and Maintenance of Plant Services	6,629,090.90				
2700 Student Transportation Services	4,955,709.81				
2800 Support Services - Central	2,081,019.34				
2900 Other Support Services	43,876.50				
Total Support Services	\$26,643,152.14				
3000 Operation of Non-Instructional Services					
3200 Student Activities	1,729,543.29				
3300 Community Services	9,278.21				
3400 Scholarships and Awards	3,316.33				
Total Operation of Non-Instructional Services	\$1,742,137.83				
4000 Facilities Acquisition, Construction and Improvement Services					
4400 Architecture and Engineering Services / Educational Specifications - Improvements	2,500.00				
4600 Existing Building Improvement Services					
Total Facilities Acquisition, Construction and Improvement Services	\$2,500.00				
5000 Other Expenditures and Financing Uses					
5100 Debt Service / Other Expenditures and Financing Uses					
5200 Interfund Transfers - Out	12,938,507.50				
Total Other Expenditures and Financing Uses	\$12,938,507.50				
TOTAL ACTUAL EXPENDITURES & OTHER FINANCING USES	\$102,344,007.44				

LEA : 113365203 Penn Manor SD

Printed 11/28/2023 4:25:17 PM

	<u>Capital Reserve (690.1850)(31)</u>	<u>Capital Reserve (1431)(32)</u>	<u>Other Capital Projects Fund(39)</u>	<u>Debt Service(40)</u>	<u>Permanent(90)</u>
1000 <u>Instruction</u>					
1100 Regular Programs - Elementary / Secondary					
1200 Special Programs - Elementary / Secondary					
1300 Vocational Education					
1400 Other Instructional Programs - Elementary / Secondary					
1500 Nonpublic School Programs					
Total Instruction					
2000 <u>Support Services</u>					
2100 Support Services - Students					
2200 Support Services - Instructional Staff					
2300 Support Services - Administration					
2400 Support Services - Pupil Health					
2500 Support Services - Business					
2600 Operation and Maintenance of Plant Services			118,129.00		
2700 Student Transportation Services					
2800 Support Services - Central					
2900 Other Support Services					
Total Support Services			\$118,129.00		
3000 <u>Operation of Non-Instructional Services</u>					
3200 Student Activities					
3300 Community Services					
3400 Scholarships and Awards					
Total Operation of Non-Instructional Services					
4000 <u>Facilities Acquisition, Construction and Improvement Services</u>					
4400 Architecture and Engineering Services / Educational Specifications - Improvements			314,632.00		
4600 Existing Building Improvement Services			6,453,011.00		
Total Facilities Acquisition, Construction and Improvement Services			\$6,767,643.00		
5000 <u>Other Expenditures and Financing Uses</u>					
5100 Debt Service / Other Expenditures and Financing Uses				9,138,507.50	
5200 Interfund Transfers - Out					
Total Other Expenditures and Financing Uses				\$9,138,507.50	
TOTAL ACTUAL EXPENDITURES & OTHER FINANCING USES			\$6,885,772.00	\$9,138,507.50	

LEA : 113365203 Penn Manor SD

Printed 11/28/2023 4:25:17 PM

	<u>Total</u>
1000 <u>Instruction</u>	
1100 Regular Programs - Elementary / Secondary	41,521,087.27
1200 Special Programs - Elementary / Secondary	16,753,008.24
1300 Vocational Education	2,404,602.96
1400 Other Instructional Programs - Elementary / Secondary	324,544.03
1500 Nonpublic School Programs	14,467.47
Total Instruction	\$61,017,709.97
2000 <u>Support Services</u>	
2100 Support Services - Students	3,263,341.96
2200 Support Services - Instructional Staff	1,184,626.08
2300 Support Services - Administration	6,307,871.94
2400 Support Services - Pupil Health	935,658.95
2500 Support Services - Business	1,241,956.66
2600 Operation and Maintenance of Plant Services	6,747,219.90
2700 Student Transportation Services	4,955,709.81
2800 Support Services - Central	2,081,019.34
2900 Other Support Services	43,876.50
Total Support Services	\$26,761,281.14
3000 <u>Operation of Non-Instructional Services</u>	
3200 Student Activities	1,729,543.29
3300 Community Services	9,278.21
3400 Scholarships and Awards	3,316.33
Total Operation of Non-Instructional Services	\$1,742,137.83
4000 <u>Facilities Acquisition, Construction and Improvement Services</u>	
4400 Architecture and Engineering Services / Educational Specifications - Improvements	317,132.00
4600 Existing Building Improvement Services	6,453,011.00
Total Facilities Acquisition, Construction and Improvement Services	\$6,770,143.00
5000 <u>Other Expenditures and Financing Uses</u>	
5100 Debt Service / Other Expenditures and Financing Uses	9,138,507.50
5200 Interfund Transfers - Out	12,938,507.50
Total Other Expenditures and Financing Uses	\$22,077,015.00
TOTAL ACTUAL EXPENDITURES & OTHER FINANCING USES	\$118,368,286.94

LEA : 113365203 Penn Manor SD

Printed 11/28/2023 4:25:30 PM

PSERS Salary Data (Salary Data should relate to the General Fund only)

Amount	Description	Amount
	Total Salary Base for salaries subject to PSERS withholding	39,158,122.00
	Total Federally Funded salaries subject to PSERS withholding	14,322,395.00

Title I Expenditure Data

Amount	Description	Amount
	Expenditures Funded with Current Title I Funds	887,735.00
	Expenditures Funded with Carry over Title I Funds	985.00
Total	Title I Expenditure Data	\$888,720.00

Title IV Revenue Data

Amount	Description	Amount
	Revenue from Title IV-A-1: Student Support and Academic Enrichment Grants	74,146.36
	Revenue from Title IV-B: 21st Century Community Learning Centers	

Title V Revenue Data

Amount	Description	Amount
	Revenue from Title V-B-2: Rural and Low-Income School Programs	
	Revenue from Title V-B-1: Small Rural School Achievement (Directly from the Federal Govt)	

1 .	<u>Current Special Education Expenditures within Function 1000</u> See list of exclusions in the note below.	8,462,253.00
2 .	<u>Current Special Education Expenditures within Function 2000</u> See list of exclusions in the note below.	2,775,446.00
2A.	<u>Current Special Education Expenditures within Sub-Function 2100</u> This data should also be included in line 2 above. See list of exclusions in the note below.	1,435,935.00
2B.	<u>Current Special Education Expenditures within Sub-Function 2200</u> This data should also be included in line 2 above. See list of exclusions in the note below.	
2C.	<u>Current Special Education Expenditures within Sub-Function 2700</u> This data should also be included in line 2 above. See list of exclusions in the note below.	446,012.00
3.	<u>Current Special Education Expenditures within Sub-Function 3100</u> See list of exclusions in the note below.	
4.	<u>Current Special Education Expenditures within Sub-Function 3200</u> See list of exclusions in the note below.	

Note: The Current Special Education Expenditure amounts for each line should be calculated as follows:

- * Include the total expenditures for special education costs from all governmental funds and the food service fund 51 for the function/sub-function requested
- * Exclude data from sub-functions: 1243,1450,1500,1600,1807,2280,2450,2750,2990
- * Exclude data from objects: 322,511,512,516,561,562,564,566,592,593,594,595,596,597,700,830,899

Benefits for Staff Relative to Collective Bargaining Agreements

	OBJECT	COVERED	NOT COVERED	TOTAL
10 General Fund				
	211 Medical Insurance			
	212 Dental Insurance			
	215 Eye Care Insurance			
	216 Prescription Insurance			
	271 Self-Insurance Medical Benefits	4,171,693.00	2,346,577.00	6,518,270.00
	272 Self-Insurance Dental Benefits	300,002.00	168,751.00	468,753.00
	275 Self-Insurance Eye Care Benefits	79,820.00	44,899.00	124,719.00
	276 Self-Insurance Prescription Benefits			
	FUND TOTAL	\$4,551,515.00	\$2,560,227.00	\$7,111,742.00
50 Enterprise Fund				
	211 Medical Insurance			
	212 Dental Insurance			
	215 Eye Care Insurance			
	216 Prescription Insurance			
	271 Self-Insurance Medical Benefits		157,603.00	157,603.00
	272 Self-Insurance Dental Benefits		11,473.00	11,473.00
	275 Self-Insurance Eye Care Benefits		1,691.00	1,691.00
	276 Self-Insurance Prescription Benefits			
	FUND TOTAL		\$170,767.00	\$170,767.00
60 Internal Service Fund	No Self Insurance data to report			
	211 Medical Insurance			
	212 Dental Insurance			
	215 Eye Care Insurance			
	216 Prescription Insurance			
	271 Self-Insurance Medical Benefits			
	272 Self-Insurance Dental Benefits			
	275 Self-Insurance Eye Care Benefits			
	276 Self-Insurance Prescription Benefits			
	FUND TOTAL			
Total of All Funds		\$4,551,515.00	\$2,730,994.00	\$7,282,509.00

LEA : 113365203 Penn Manor SD

Printed 11/28/2023 4:25:37 PM

Function	Special Education (Prior Year)	Nonspecial Education (Prior Year)	Total (Prior Year)	Special Education (Current Year)	Nonspecial Education (Current Year)	Total (Current Year)
2120 Guidance Services	713,715.00	1,385,447.00	2,099,162.00	883,901.34	1,656,045.04	2,539,946.38
2140 Psychological Services	584,463.00	146,116.00	730,579.00	549,837.15	137,459.29	687,296.44
2150 Speech Pathology and Audiology Services						
2160 Social Work Services						
2260 Instruction and Curriculum Development Services						
2350 Legal and Accounting Services	6,453.00	54,947.00	61,400.00	4,386.67	36,074.25	40,460.92
2420 Medical Services	2,956.00	14,431.00	17,387.00	3,002.90	14,255.17	17,258.07
2440 Nursing Services	129,150.00	630,554.00	759,704.00	159,530.34	757,310.67	916,841.01
2700 Student Transportation Services	517,622.00	4,036,803.00	4,554,425.00	446,012.00	4,509,697.56	4,955,709.56
Total	\$1,954,359.00	\$6,268,298.00	\$8,222,657.00	\$2,046,670.40	\$7,110,841.98	\$9,157,512.38

LEA : 113365203 Penn Manor SD

(PRINCIPAL AMOUNTS ONLY)								
<u>GOVERNMENTAL FUNDS/ ACTIVITIES</u>	Short-Term Borrowing	General Obligation Bonds/Notes	Authority Building Obligations	Leases, Other Right to Use Arrangements	Extended Term Financing Agreements	Other Long Term Debt/Liabilities	OPEB, Comp Abs, Net Pension Liab	Total
1. Debt at Beginning of Fiscal Year		105,640,000.00				1,099,099.00	123,906,127.00	230,645,226.00
2. Additional Debt Incurred During Year						350,638.00	4,738,184.00	5,088,822.00
3. Retirements and Repayments		4,925,000.00					3,330,156.00	8,255,156.00
4. Debt at End of Fiscal Year		100,715,000.00				1,449,737.00	125,314,155.00	227,478,892.00
5. Accreted Interest at End Of Fiscal Year								
6. Total Debt and Accreted Interest		100,715,000.00				1,449,737.00	125,314,155.00	227,478,892.00
7. Current Portion P&I - Due within 1 year		9,133,923.00				144,973.00	12,531,415.00	21,810,311.00
8. Interest Paid during current fiscal year		4,213,507.50						4,213,507.50

(PRINCIPAL AMOUNTS ONLY)								
<u>PROPRIETARY FUNDS</u>	Short-Term Borrowing	General Obligation Bonds/Notes	Authority Building Obligations	Leases, Other Right to Use Arrangements	Extended Term Financing Agreements	Other Long Term Debt/Liabilities	OPEB, Comp Abs, Net Pension Liab	Total
1. Debt at Beginning of Fiscal Year							28,897.00	28,897.00
2. Additional Debt Incurred During Year								
3. Retirements and Repayments							4,912.00	4,912.00
4. Debt at End of Fiscal Year							23,985.00	23,985.00
5. Accreted Interest at End Of Fiscal Year								
6. Total Debt and Accreted Interest							23,985.00	23,985.00
7. Current Portion P&I - Due within 1 year							2,399.00	2,399.00
8. Interest Paid during current fiscal year								

LEA : 113365203 Penn Manor SD

Total Principal and Interest Payments Made by Your School - All Funds

Function	Fund		Principal (910)	Principal (920)	Interest (830)	Total (Principal +Interest)	Misc Other Uses (990)
5110	10	General Fund					
5110	20	Special Revenue Funds					
5110	30	Capital Projects Funds					
5110	40	Debt Service Fund	4,925,000.00		4,213,507.50	9,138,507.50	
5110	90	Permanent Fund					
5120	10	General Fund					
5120	20	Special Revenue Funds					
5120	30	Capital Projects Funds					
5120	40	Debt Service Fund					
5140	10	General Fund					
5140	20	Special Revenue Funds					
5140	30	Capital Projects Funds					
5140	40	Debt Service Fund					
5140	90	Permanent Fund					
Total Debt Payments - Governmental Funds			\$4,925,000.00		\$4,213,507.50	\$9,138,507.50	

Function	Fund		Principal (910)	Principal (920)	Interest (830)	Total (Principal +Interest)
5110	50	Enterprise Fund				
5110	60	Internal Service Fund				
5120	50	Enterprise Fund				
5120	60	Internal Service Fund				
5140	50	Enterprise Fund				
5140	60	Internal Service Fund				
Total Debt Payments - Proprietary Funds						

LEA : 113365203 Penn Manor SD

<u>Debt Details</u> <u>Governmental Funds/ Activities</u>		Principal Amounts Only				Current Portion Due Within One Year (Principal and Interest)	Interest Paid During Fiscal Year
Debt Category	Debt Issue Date (MM/YYYY)	Debt at Beginning of Fiscal Year	Additions	Reductions / Repayments	Debt at End of Fiscal Year		
General Obligation Bonds/Notes – CIB	11/2020	15,620,000.00		460,000.00	15,160,000.00	1,176,920.00	187,440.00
General Obligation Bonds/Notes – CIB	07/2019	9,130,000.00		5,000.00	9,125,000.00	328,873.00	323,955.00
General Obligation Bonds/Notes – CIB	07/2019	35,780,000.00		5,000.00	35,775,000.00	1,794,920.00	1,527,092.50
General Obligation Bonds/Notes – CIB	10/2018	36,110,000.00		5,000.00	36,105,000.00	1,532,010.00	1,789,920.00
General Obligation Bonds/Notes – CIB	10/2017	9,000,000.00		4,450,000.00	4,550,000.00	4,301,200.00	385,100.00
Other Long Term Debt/Liabilities		1,099,099.00	350,638.00		1,449,737.00	144,973.00	
Compensated Absences		2,146,455.00	121,184.00		2,267,639.00	226,764.00	
Other Post-Employment Benefits (OPEB)		11,850,672.00		3,330,156.00	8,520,516.00	852,051.00	
Net Pension Liability		109,909,000.00	4,617,000.00		114,526,000.00	11,452,600.00	
Totals for Debt Entered:		\$230,645,226.00	\$5,088,822.00	\$8,255,156.00	\$227,478,892.00	\$21,810,311.00	\$4,213,507.50

<u>Bond Details</u> <u>Proprietary Funds</u>		Principal Amounts Only				Current Portion Due Within One Year (Principal and Interest)	Interest Paid During Fiscal Year
Debt Category	Debt Issue Date (MM/YYYY)	Debt at Beginning of Fiscal Year	Additions	Reductions / Repayments	Debt at End of Fiscal Year		
Compensated Absences		28,897.00		4,912.00	23,985.00	2,399.00	
Totals for Debt Entered:		\$28,897.00		\$4,912.00	\$23,985.00	\$2,399.00	

LEA : 113365203 Penn Manor SD

Printed 11/28/2023 4:25:42 PM

General Fund (10)

Section 1: Tuition/Purchased Services as Reported within Expenditure Detail	Amount
Tuition Reported in General Fund Expenditures 1000-560	5,319,889.07
Purchased Services in General Fund Expenditures 1000-594 and 1000-597	13,789.69
Section 1 Total	\$5,333,678.76

Section 2: Tuition Paid to Institution Types During Fiscal Year	Tuition Paid For Nonspecial Education	Tuition Paid For Special Education	Total
1 1306 Institutions			
2 Institutionalized Children's Programs			
3 Juveniles Incarcerated in Adult Facilities			
4 Residential Treatment Facilities			
5 Other Local Education Agencies	66,824.20	229,665.82	296,490.02
6 Brick and Mortar Charter Schools	23,546.00	18,750.00	42,296.00
7 Cyber Charter Schools	1,039,333.58	961,702.50	2,001,036.08
8 Career and Technology Centers	1,820,501.00		1,820,501.00
9 Approved Private Schools		48,537.58	48,537.58
10 PA Chartered Schools for the Deaf and Blind			
11 Private Residential Rehabilitative Institutions	11,701.75	11,331.68	23,033.43
12 Juvenile Detention Centers			
13 Special Program Jointures			
14 Other Tuition Not Included Elsewhere In This Section	87,219.69	1,014,564.96	1,101,784.65
Section 2 Total	\$3,049,126.22	\$2,284,552.54	\$5,333,678.76

LEA : 113365203 Penn Manor SD

Printed 11/28/2023 4:25:43 PM

Food Service / Cafeteria Operations Fund (51)

3000 Operation of Non-Instructional Services		Total
100 <u>Personnel Services – Salaries</u>		
100 Personnel Services – Salaries		719,655.00
Total Personnel Services – Salaries		\$719,655.00
200 <u>Personnel Services – Employee Benefits</u>		
210 Group Insurance – Contracted Provider		1,351.00
220 Social Security Contributions		52,901.00
230 PSERS Retirement Contributions		252,239.00
250 Unemployment Compensation		288.00
260 Workers' Compensation		4,328.00
270 Group Insurance – Self-Insurance		136,687.00
299 All Other Employee Benefits		(4,912.00)
Total Personnel Services – Employee Benefits		\$442,882.00
300 <u>Purchased Professional and Technical Services</u>		
330 Other Professional Services		600.00
Total Purchased Professional and Technical Services		\$600.00
400 <u>Purchased Property Services</u>		
410 Cleaning Services		5,000.00
430 Repairs and Maintenance Services		48,435.00
460 Extermination Services		2,945.00
Total Purchased Property Services		\$56,380.00
500 <u>Other Purchased Services</u>		
570 Food Service Management		87,012.00
580 Travel		2,083.00
Total Other Purchased Services		\$89,095.00
600 <u>Supplies</u>		
610 General Supplies		167,875.00
630 Food		1,533,869.00
Total Supplies		\$1,701,744.00
700 <u>Property</u>		
740 Depreciation		39,310.00
Total Property		\$39,310.00
800 <u>Other Objects</u>		
810 Dues and Fees		295.00
890 Miscellaneous Expenditures		364.00
Total Other Objects		\$659.00
Total 3000 Operation of Non-Instructional Services		\$3,050,325.00

LEA : 113365203 Penn Manor SD

Printed 11/28/2023 4:25:43 PM

Food Service / Cafeteria Operations Fund (51)

3100 Food Services	Elementary	Secondary	Federal	Total
100 <u>Personnel Services – Salaries</u>				
100 Personnel Services – Salaries				719,655.00
Total Personnel Services – Salaries				\$719,655.00
200 <u>Personnel Services – Employee Benefits</u>				
210 Group Insurance – Contracted Provider				1,351.00
220 Social Security Contributions				52,901.00
230 PSERS Retirement Contributions				252,239.00
250 Unemployment Compensation				288.00
260 Workers' Compensation				4,328.00
270 Group Insurance – Self-Insurance				136,687.00
299 All Other Employee Benefits				(4,912.00)
Total Personnel Services – Employee Benefits				\$442,882.00
300 <u>Purchased Professional and Technical Services</u>				
330 Other Professional Services				600.00
Total Purchased Professional and Technical Services				\$600.00
400 <u>Purchased Property Services</u>				
410 Cleaning Services				5,000.00
430 Repairs and Maintenance Services				48,435.00
460 Extermination Services				2,945.00
Total Purchased Property Services				\$56,380.00
500 <u>Other Purchased Services</u>				
570 Food Service Management				87,012.00
580 Travel				2,083.00
Total Other Purchased Services				\$89,095.00
600 <u>Supplies</u>				
610 General Supplies				167,875.00
630 Food				1,533,869.00
Total Supplies				\$1,701,744.00
700 <u>Property</u>				
740 Depreciation				39,310.00
Total Property				\$39,310.00
800 <u>Other Objects</u>				
810 Dues and Fees				295.00
890 Miscellaneous Expenditures				364.00
Total Other Objects				\$659.00
Total 3100 Food Services				\$3,050,325.00

	<u>Food Service(51)</u>	<u>Child Care Operations(52)</u>	<u>Other Enterprise(58)</u>	<u>Internal Service(60)</u>	<u>Total</u>
3000 <u>Operation of Non-Instructional Services</u>					
3100 Food Services	3,050,325.00				3,050,325.00
Total Operation of Non-Instructional Services	\$3,050,325.00				\$3,050,325.00
TOTAL ACTUAL EXPENDITURES & OTHER FINANCING USES	\$3,050,325.00				\$3,050,325.00

LEA : 113365203 Penn Manor SD

Printed 11/28/2023 4:25:51 PM

Fund	School	School Number	Local Personnel	Local Nonpersonnel	State Personnel	State Nonpersonnel	Federal Personnel	Federal Nonpersonnel	Total	Explanation
10										
	Central Manor El Sch	7141	4,564,901.00	874,920.00	2,130,466.00	408,330.00	113,531.00	126,346.00	8,218,494.00	
	Conestoga El Sch	2516	2,403,740.00	465,284.00	1,121,840.00	217,151.00	59,782.00	66,530.00	4,334,327.00	
	Eshleman El Sch	2629	2,484,600.00	472,833.00	1,159,577.00	220,674.00	61,793.00	68,768.00	4,468,245.00	
	Hambright El Sch	2626	4,461,989.00	898,364.00	2,082,436.00	419,272.00	520,582.00	127,217.00	8,509,860.00	
	Letort El Sch	2627	2,418,442.00	476,364.00	1,128,701.00	222,322.00	60,148.00	66,937.00	4,372,914.00	
	Manor Middle School	7410	3,887,785.00	772,109.00	1,814,452.00	360,348.00	244,310.00	34,908.00	7,113,912.00	
	Martic El Sch	2628	2,168,512.00	444,048.00	1,012,057.00	207,240.00	180,728.00	60,640.00	4,073,225.00	
	Marticville MS	5238	3,022,084.00	677,340.00	1,410,424.00	316,118.00	63,352.00	27,135.00	5,516,453.00	
	Penn Manor HS	2633	13,969,269.00	2,723,225.00	6,519,538.00	1,270,945.00	292,840.00	129,429.00	24,905,246.00	
	Pequea El Sch	2634	2,852,145.00	565,431.00	1,331,112.00	263,890.00	180,761.00	79,181.00	5,272,520.00	
Total			42,233,467.00	8,369,918.00	19,710,603.00	3,906,290.00	1,777,827.00	787,091.00	76,785,196.00	