



# **Penn Manor High School Design Update**

**Booster Club Presentation**

**April 10, 2018**



**Crabtree, Rohrbaugh & Associates, Architects**



# AGENDA

Site Plan

Overall Floor Plans

Music and Performing Arts Plans

Athletics Plans

Exterior Renderings

Questions?

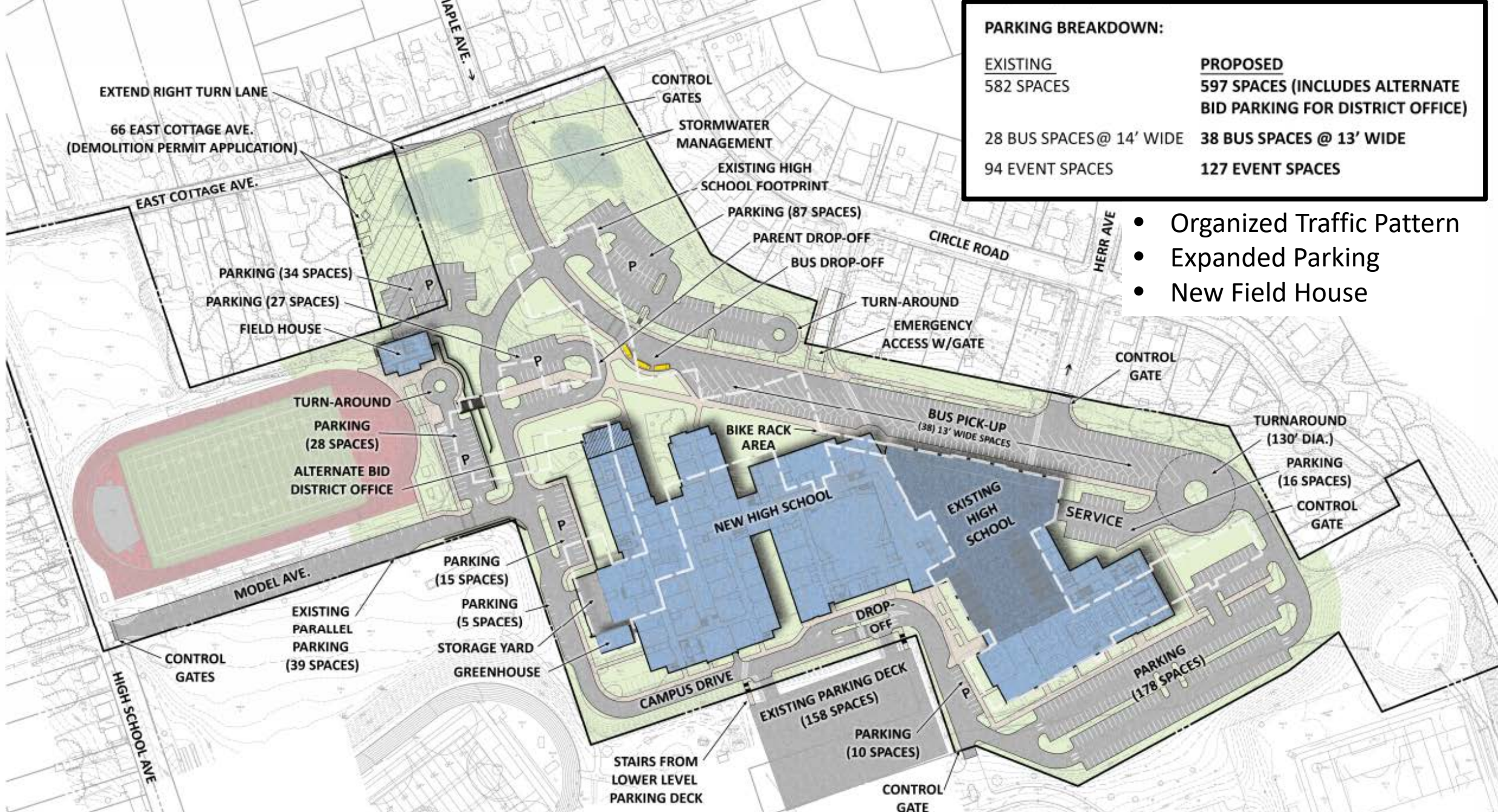




# SITE PLAN







**PARKING BREAKDOWN:**

| EXISTING                 | PROPOSED  |
|--------------------------|---|
| 582 SPACES               | 597 SPACES (INCLUDES ALTERNATE BID PARKING FOR DISTRICT OFFICE) |
| 28 BUS SPACES @ 14' WIDE | 38 BUS SPACES @ 13' WIDE  |
| 94 EVENT SPACES          | 127 EVENT SPACES  |

- Organized Traffic Pattern
- Expanded Parking
- New Field House

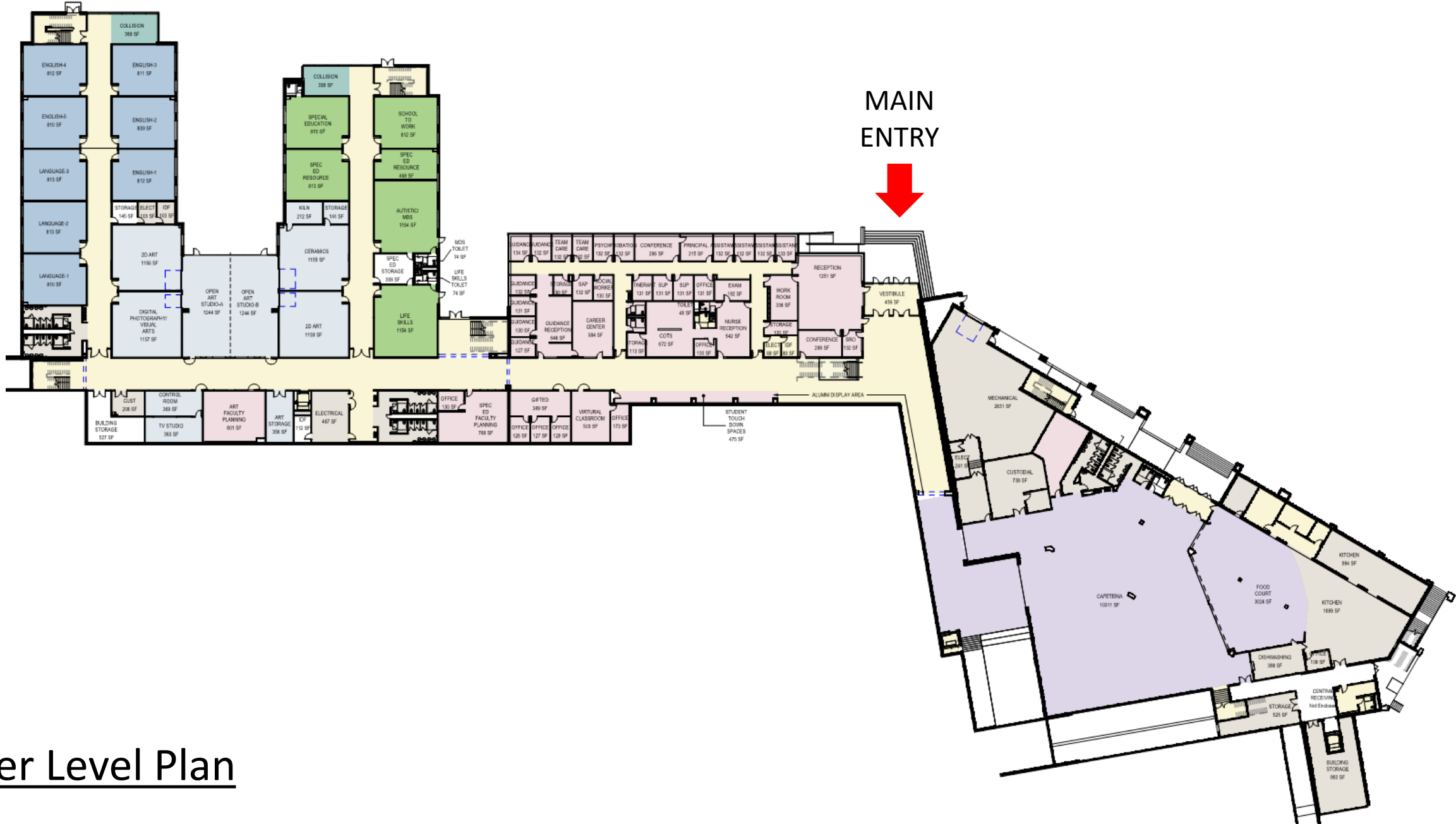




# FLOOR PLANS

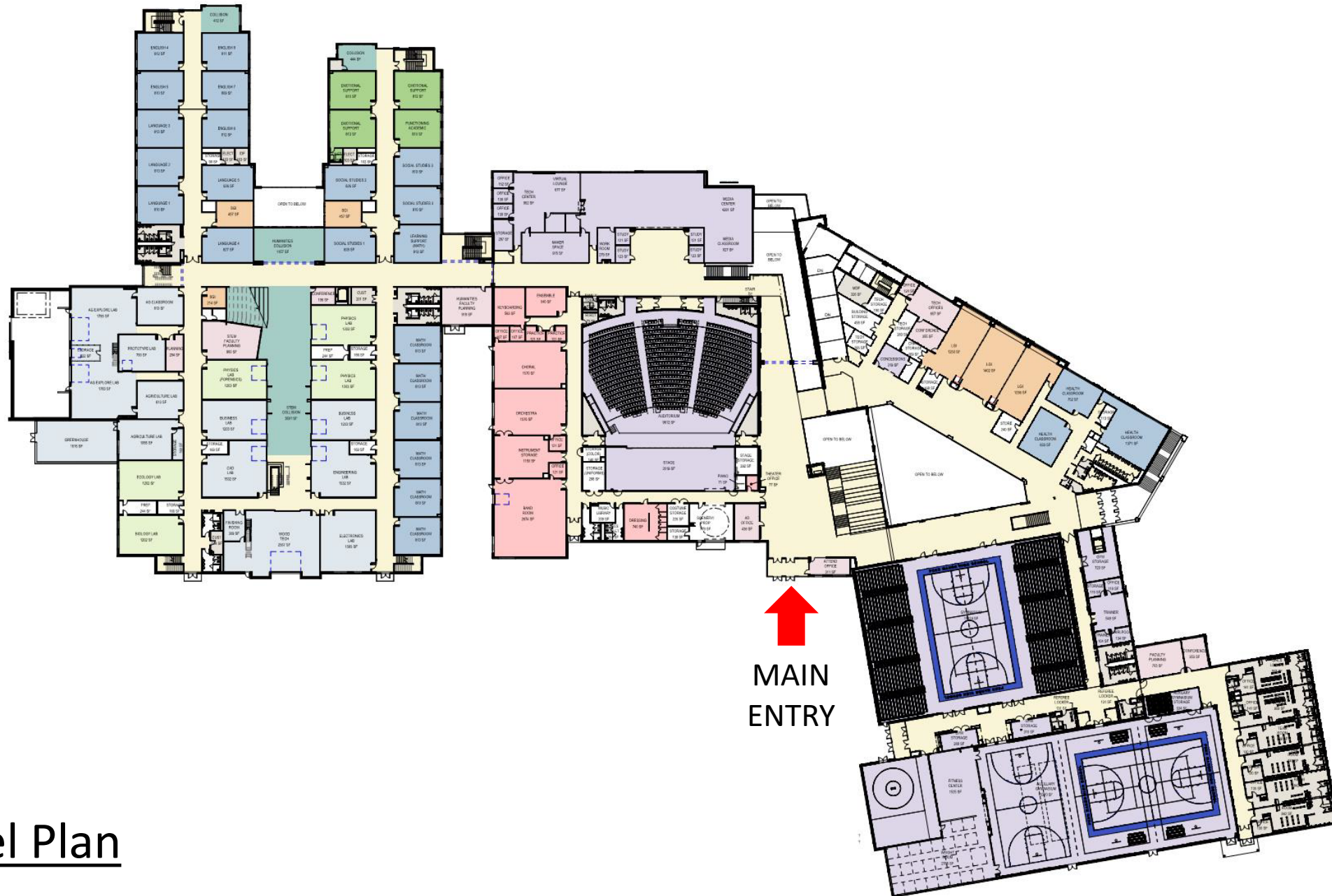






Lower Level Plan





Main Level Plan



Upper Level Plan



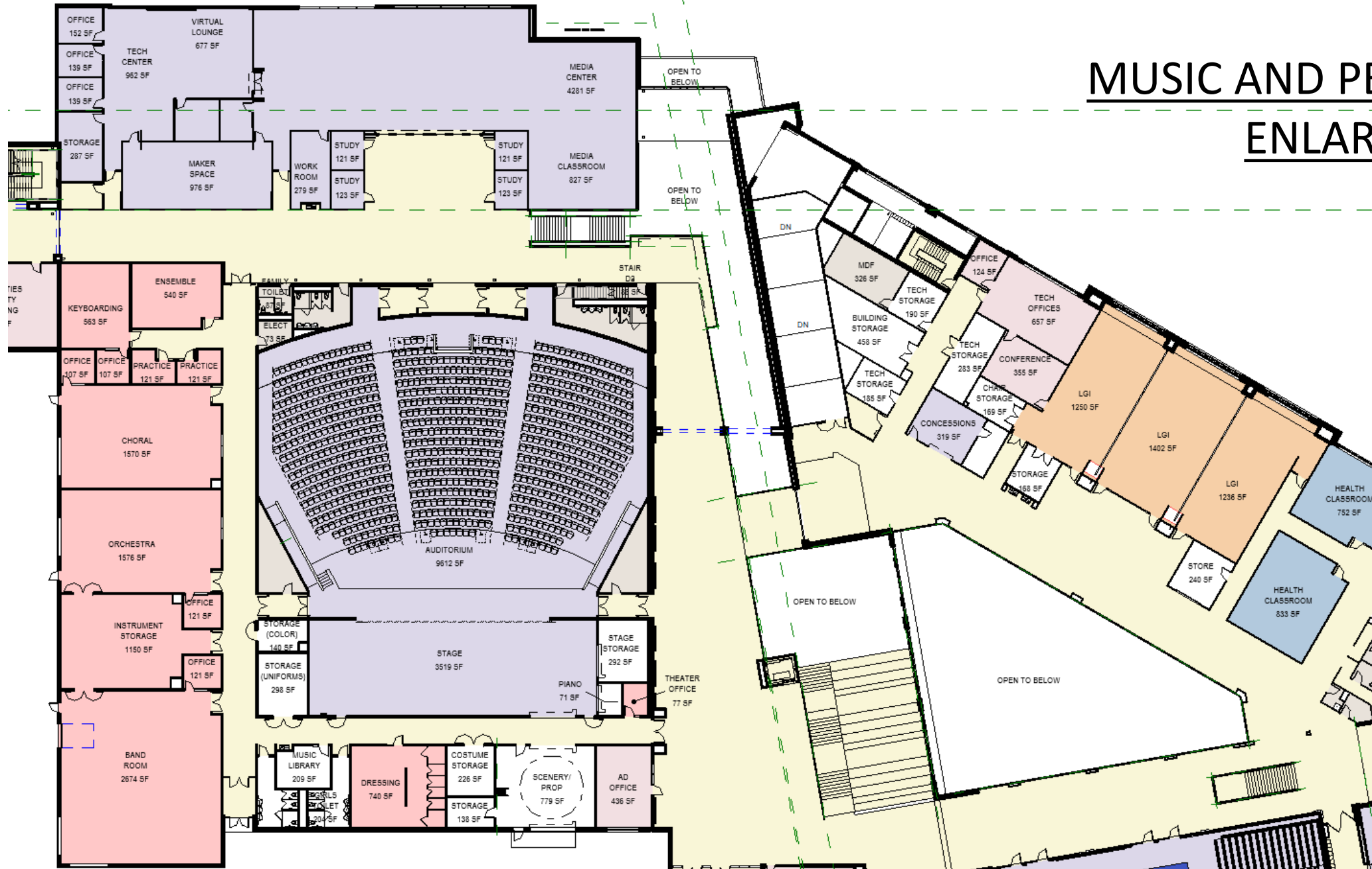


# MUSIC AND PERFORMING ARTS

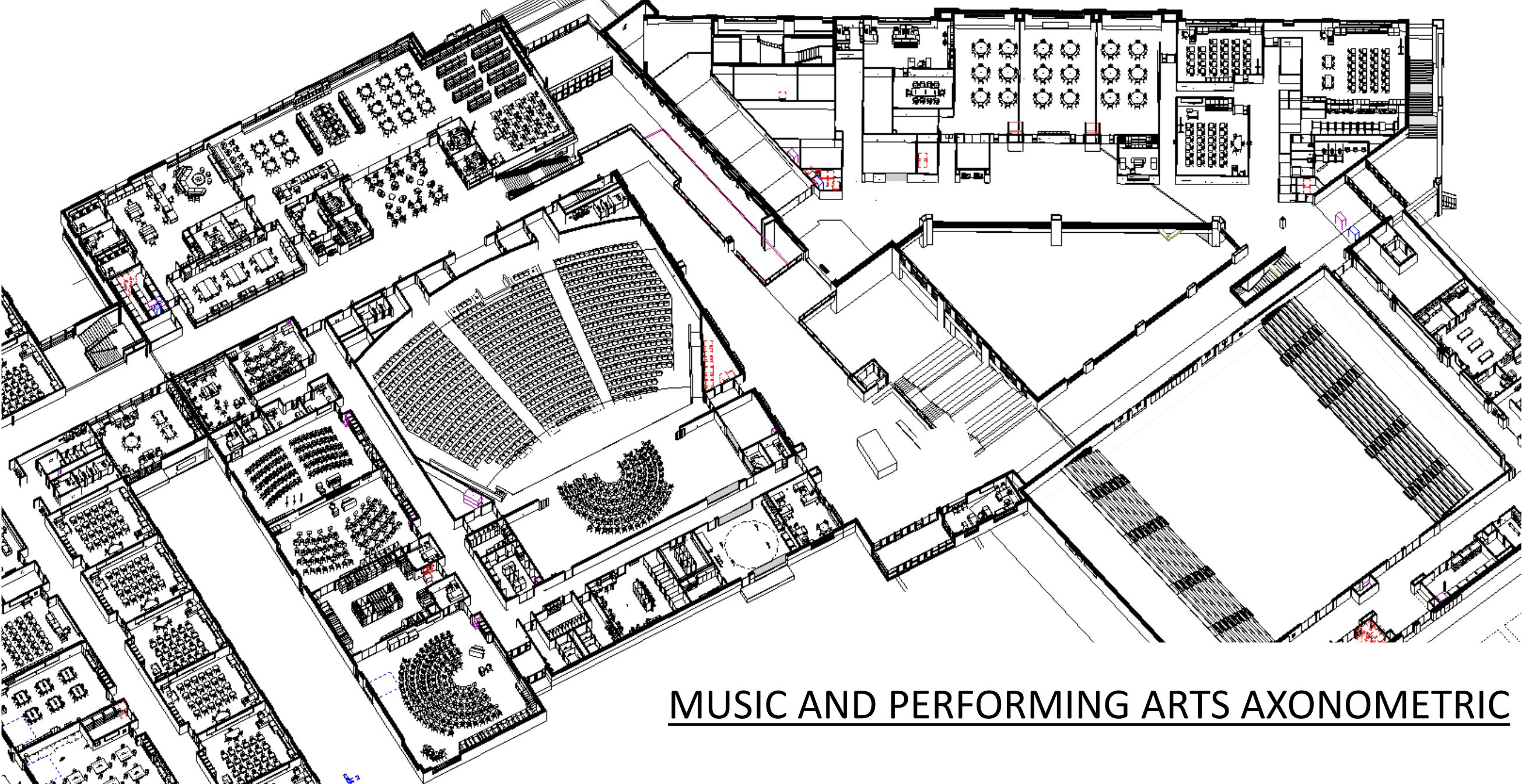




# MUSIC AND PERFORMING ARTS ENLARGED FLOOR PLAN







# MUSIC AND PERFORMING ARTS AXONOMETRIC

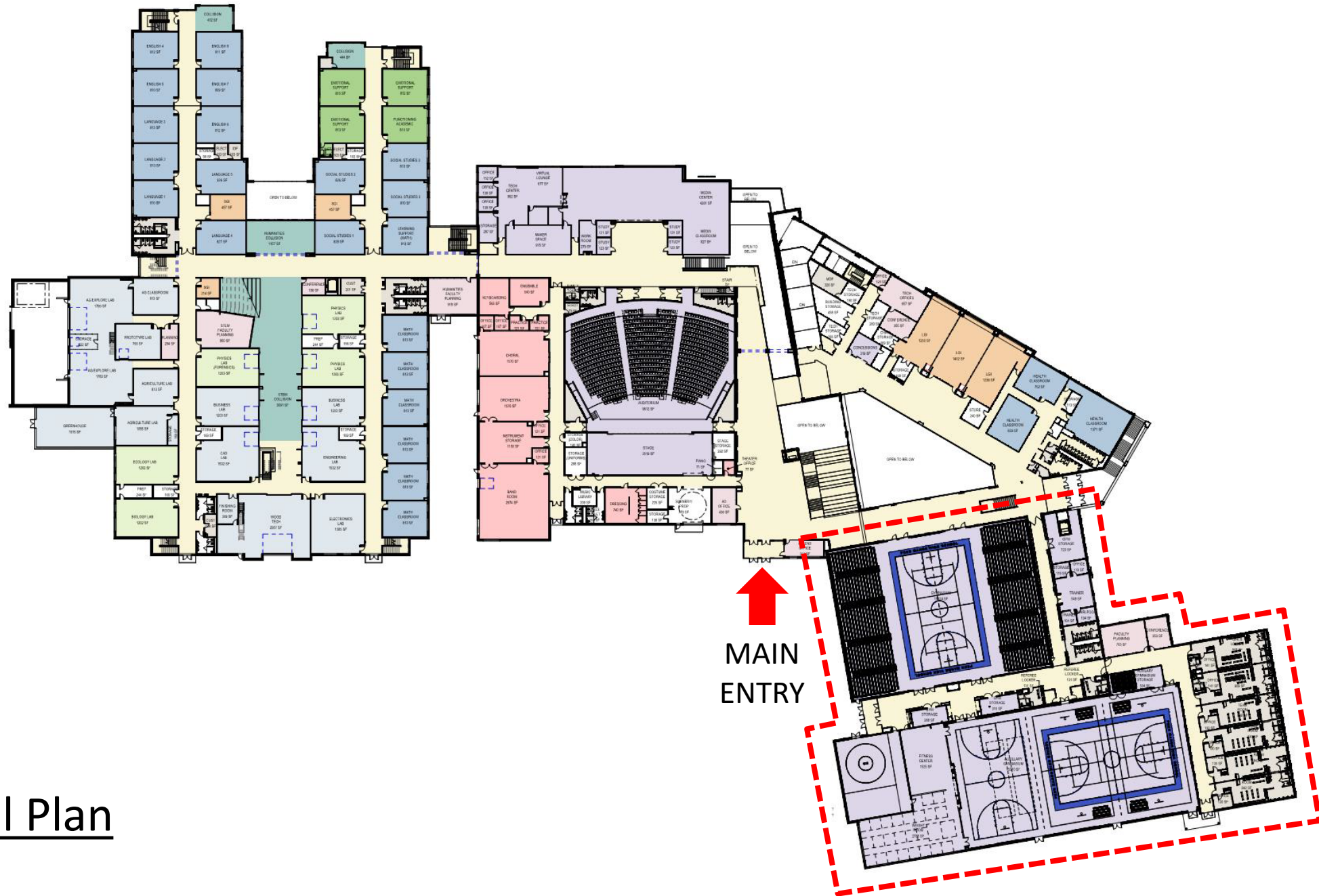






# ATHLETICS

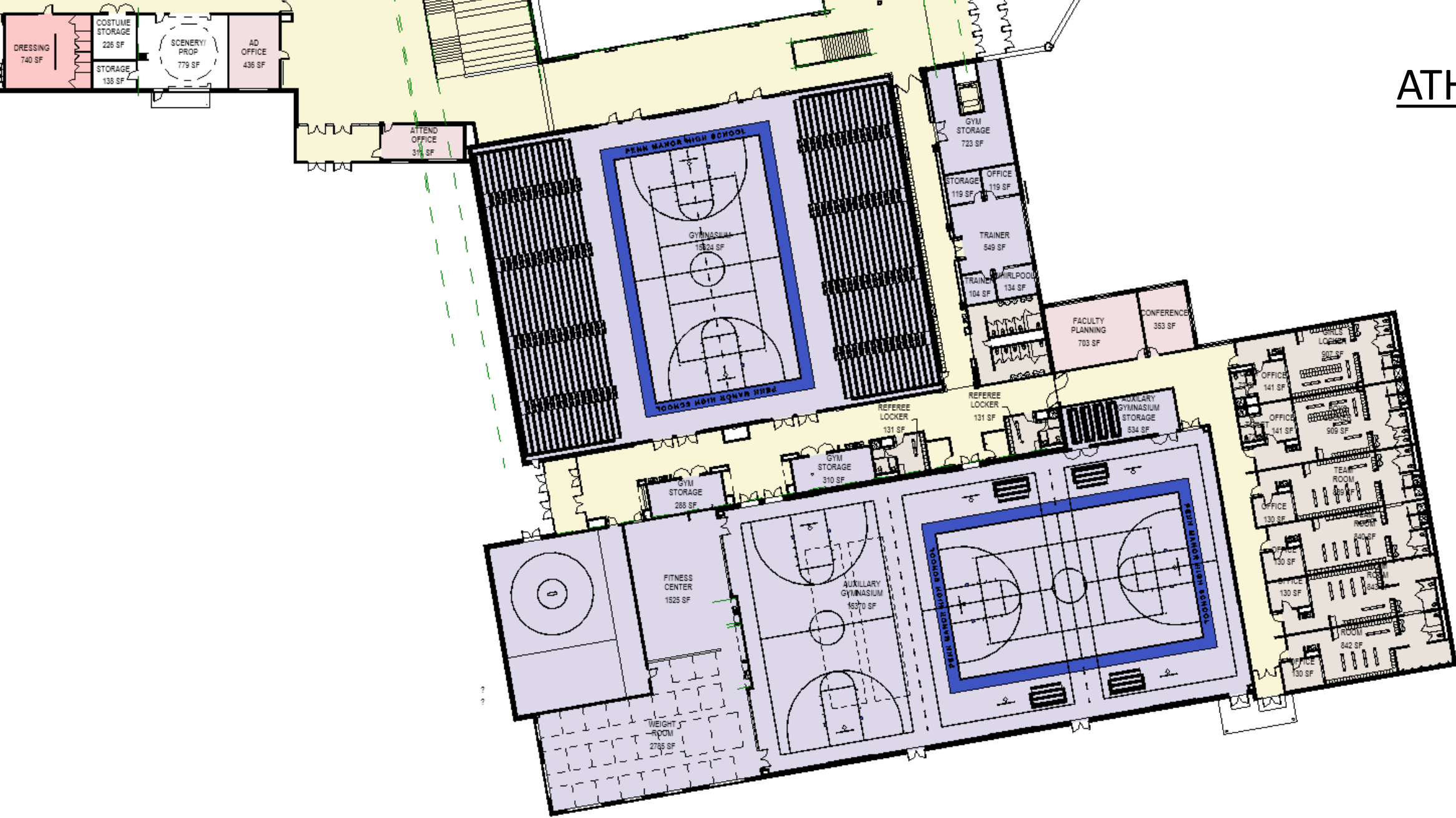


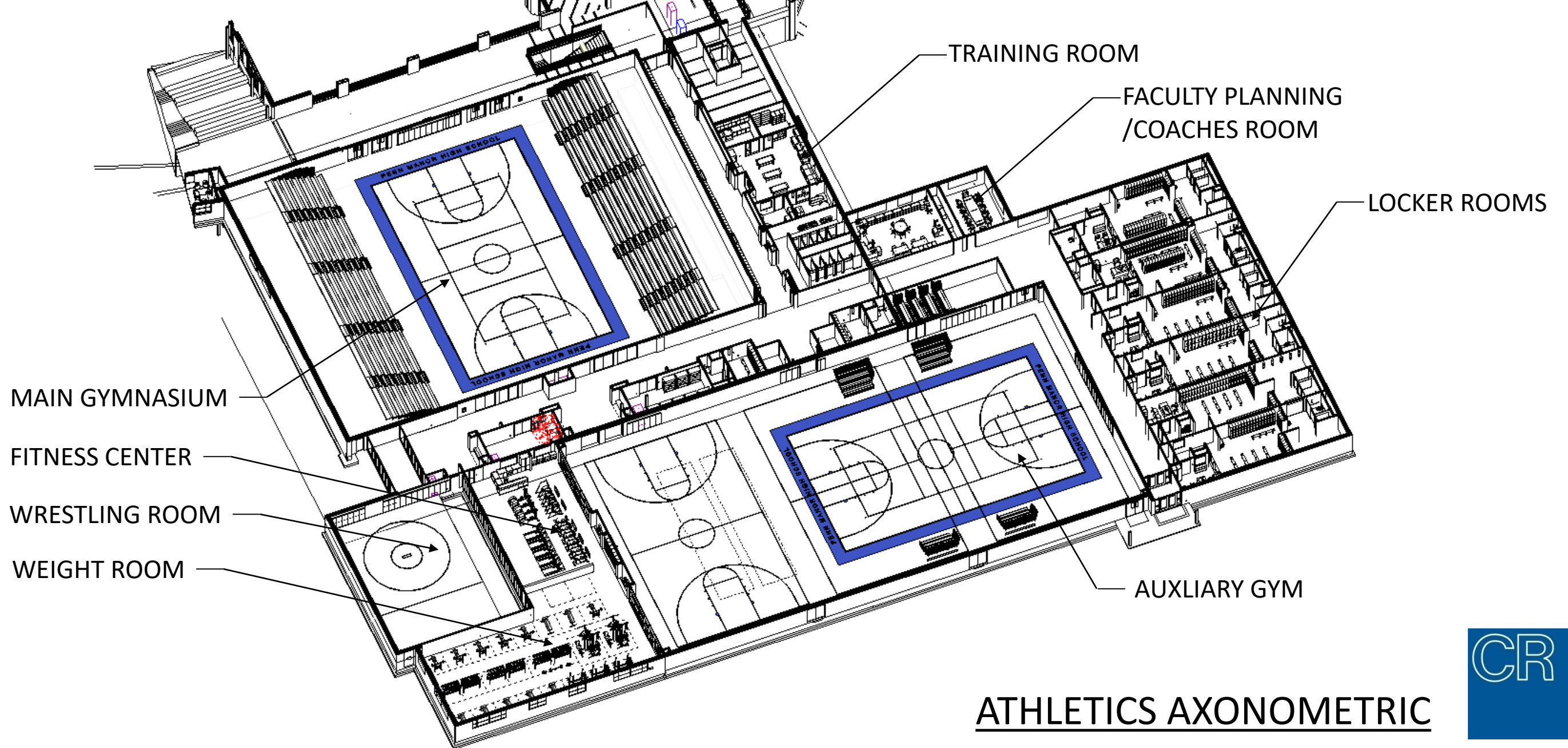


Main Level Plan



# ATHLETICS PLAN

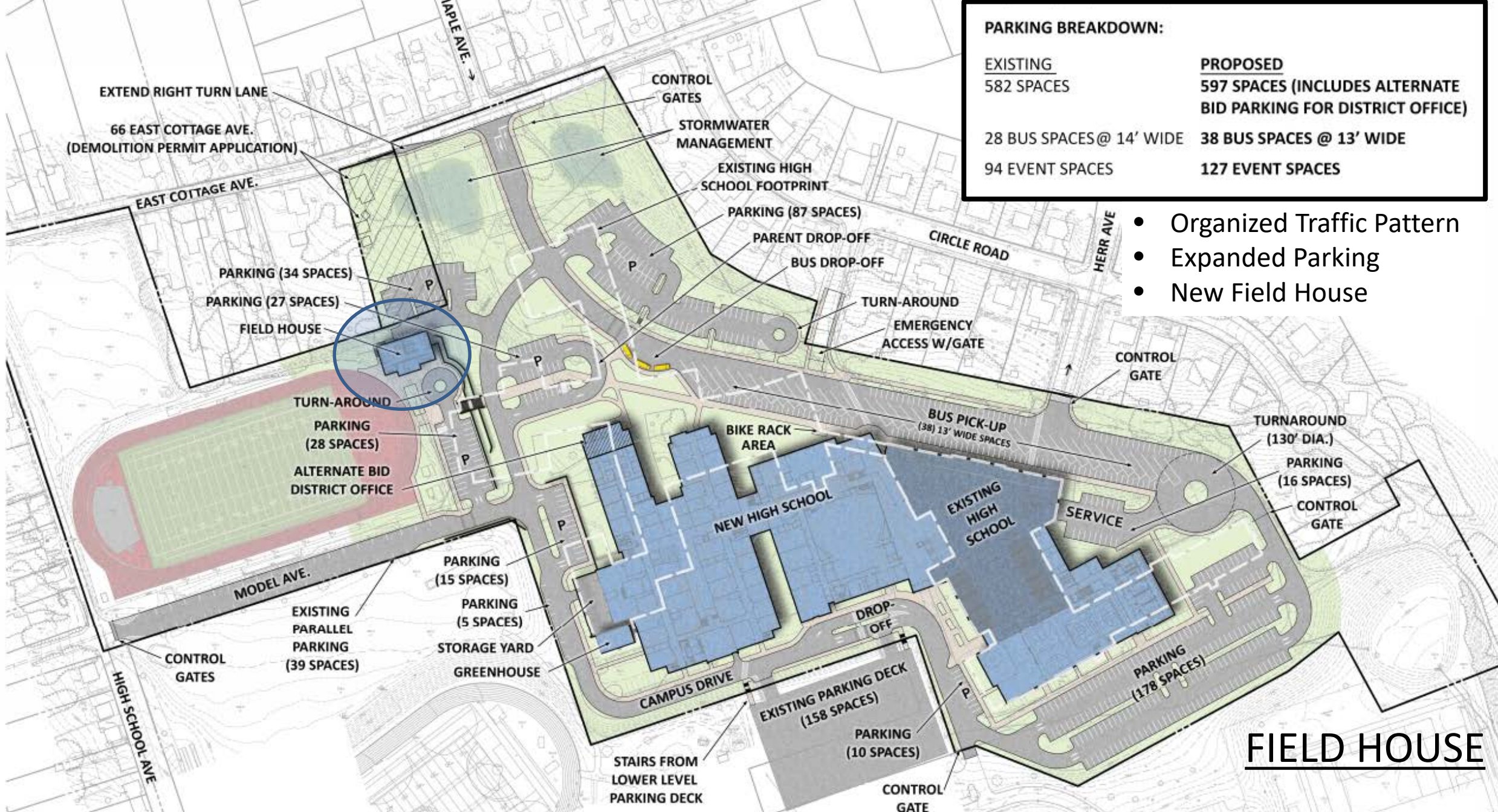




# ATHLETICS AXONOMETRIC







**PARKING BREAKDOWN:**

| EXISTING                 | PROPOSED  |
|--------------------------|---|
| 582 SPACES               | 597 SPACES (INCLUDES ALTERNATE BID PARKING FOR DISTRICT OFFICE) |
| 28 BUS SPACES @ 14' WIDE | 38 BUS SPACES @ 13' WIDE  |
| 94 EVENT SPACES          | 127 EVENT SPACES  |

- Organized Traffic Pattern
- Expanded Parking
- New Field House

**FIELD HOUSE**

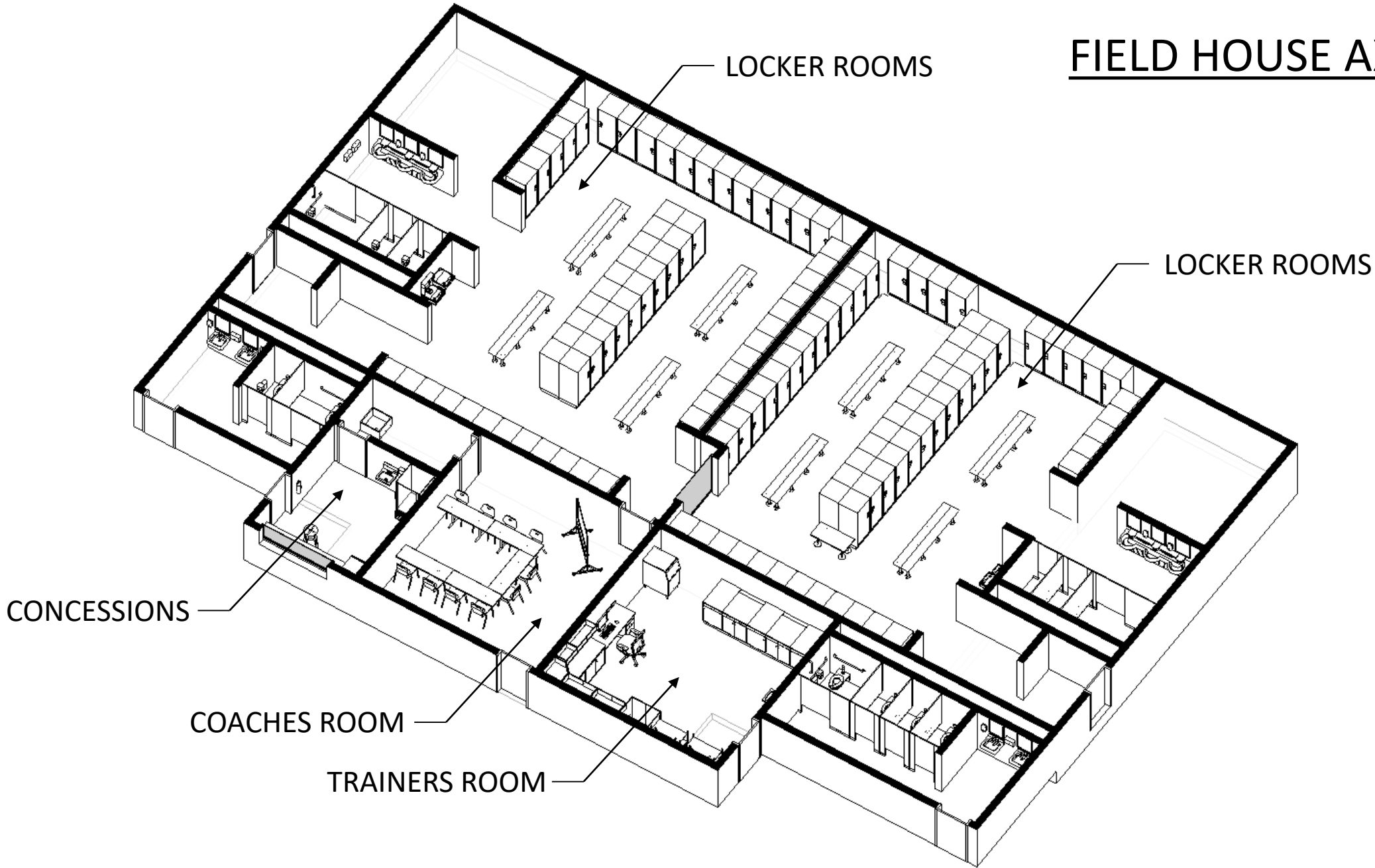


# FIELD HOUSE PLAN





# FIELD HOUSE AXONOMETRIC



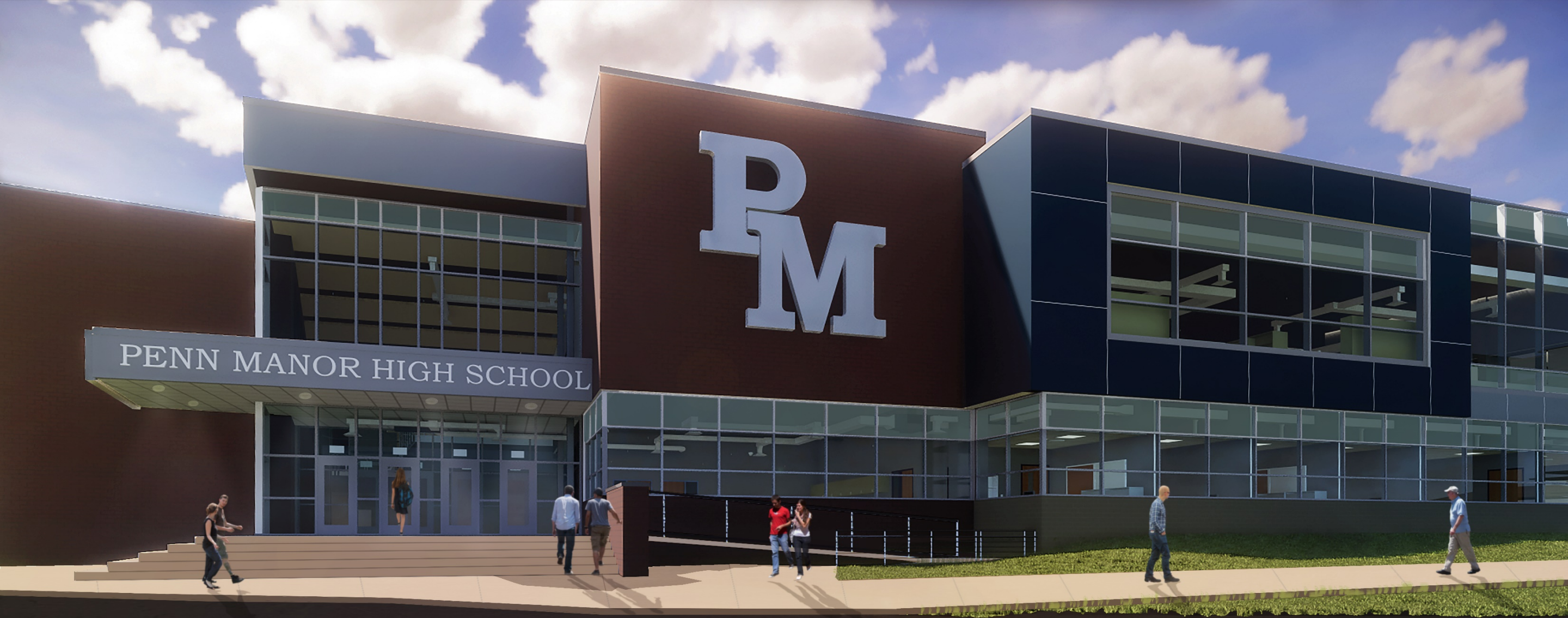




EXTERIOR RENDERING | MAIN ENTRY APPROACH







EXTERIOR RENDERING | MAIN ENTRY





EXTERIOR RENDERING | SECONDARY ENTRY



# QUESTIONS

